

East Tennessee State University

Digital Commons @ East Tennessee State University

ETSU Yearbooks

University Archives

1941

The Buccaneer (1941)

East Tennessee State University

Follow this and additional works at: <https://dc.etsu.edu/yearbooks>



Part of the [Higher Education Commons](#)

Recommended Citation

The Buccaneer (1941), Archives of Appalachia, East Tennessee State University
<https://dc.etsu.edu/yearbooks/24>

This Book is brought to you for free and open access by the University Archives at Digital Commons @ East Tennessee State University. It has been accepted for inclusion in ETSU Yearbooks by an authorized administrator of Digital Commons @ East Tennessee State University. For more information, please contact digilib@etsu.edu.

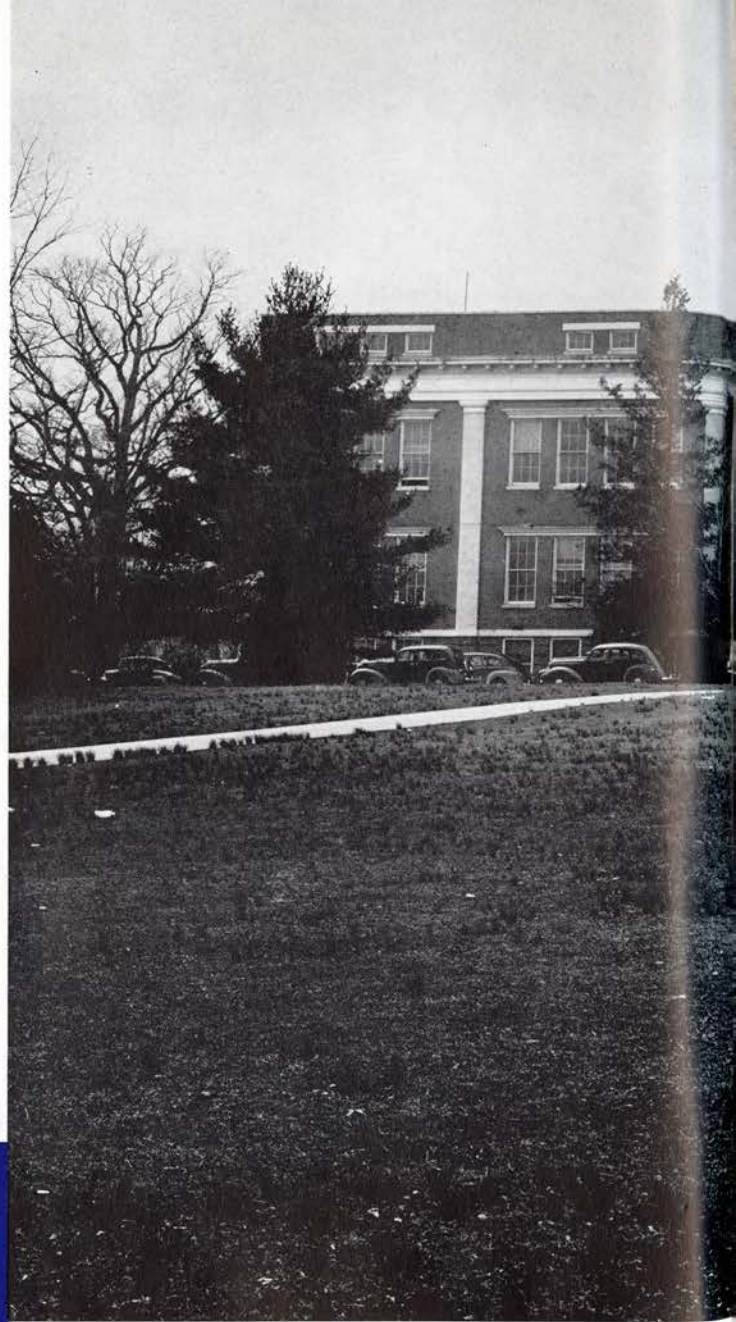
THE
BUCCANNERS

I 9 4 I





THE BUCCANEER



1941



BUCCANEER

STATE TEACHERS COLLEGE

JOHNSON CITY, TENNESSEE

SP. Co.
LD
5278
.E274
1941
C.3



To Professor Bible

We, the Senior Class, do affectionately dedicate to Professor Willis B. Bible this, **The 1941 Buccaneer**, as a symbol of appreciation for his sound philosophy of life, sincerity in teaching, and his faithfulness as chairman of the Student Activities Committee and Student Relations Committee.

not acc.



ADMINISTRATION



D. S. Burleson
DEAN



Dr. C. C. Sherrod
PRESIDENT



Dr. Frank Field
REGISTRAR

THE ADMINISTRATION



John A. Clack
BUSINESS MANAGER



Ella V. Ross
DEAN OF WOMEN

FACULTY

C. Hodge Mathes
Ina Yoakley
W. C. Wilson
Ruth E. Thomas
Thomas C. Carson
Mary L. Gordy



Ada H. Earnest
Dr. H. B. Huddle
Elizabeth Slocumb
Robert B. Cox
Olive Taylor
Dr. D. G. Stout



W. F. Rogers
Maxine Mathews
Dr. Lester R. Wheeler
Elizabeth Black
Dr. D. M. Brown
Marie Harrison



Dr. J. G. McMurray
Bernice Barnard
W. B. Bible
Mary Williams
Archie L. McNeal
Gretchen Hyder



W. L. Prince
Frances Terry
Velma Cloyd
L. Dewey Wallis
Grace J. Mauk
Eleanor Carlock



Ruby Doak
W. R. Baker
Dr. P. W. Alexander
Mrs. Bert D. Hodges
Thomas W. Chamberlin
Margaret Madden



Virginia Q. Paulling
R. B. Houston
Ella V. Ross
Vera Hoover
Blanche Britton
Mrs. Robert Imboden



Dr. James T. Tanner
Nancy Sheedy
James I. Mooney
Roger W. Barrigar
Dr. Lester M. Fraley
William H. Nebergall



Dr. H. B. Fuqua
Mrs. Lester M. Fraley
Mondel Ely Butterfield
Isabel Martin
Florence Cole
Thomas P. Field





THE TENNESSEE COLLEGIAN

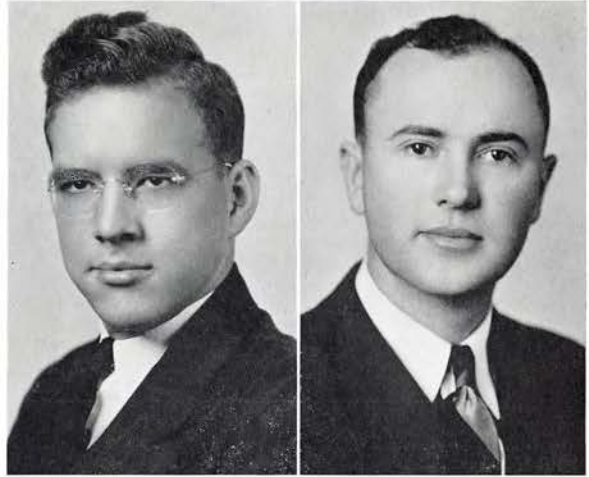
Rex Depew, Isabelle Holmes
 Associate Editors
 Pauleene Banner Associate News Editor
 Billie Card, Julia Chwalek
 Organization Reporters
 Sutton Carter, Fred Still, Jettee Carter,
 Doris Perry Reporters
 Thelma Goforth Secretary
 Fred Woods Feature Editor
 Shirley Baumgardner Associate Editor
 Edison Day Music Editor
 Georgia King Feature Writer
 Eloise Carriger Columnist
 Earl Hunt Religious Editor
 Elizabeth Longmire Fashion Editor
 Kathryn Lockett, Scott Herrin Columnists
 Jackson Fugate Literary Editor
 Kermit Carter Sports Coordinator
 Houston Campbell Sports Feature
 Jay Harville Sports Columnist
 Bill Hart Aviation Editor
 Kathryn King Girl's Sports
 Harrison Marshall Advertising Manager
 Juanita Millsaps Associate Manager
 Dr. Frank Field Faculty Advisor
 Minter Haynes, Walter Hendrix
 Technical Advisors



Kent Herrin
 Editor-in-Chief

Thomas Morris
 Business Manager

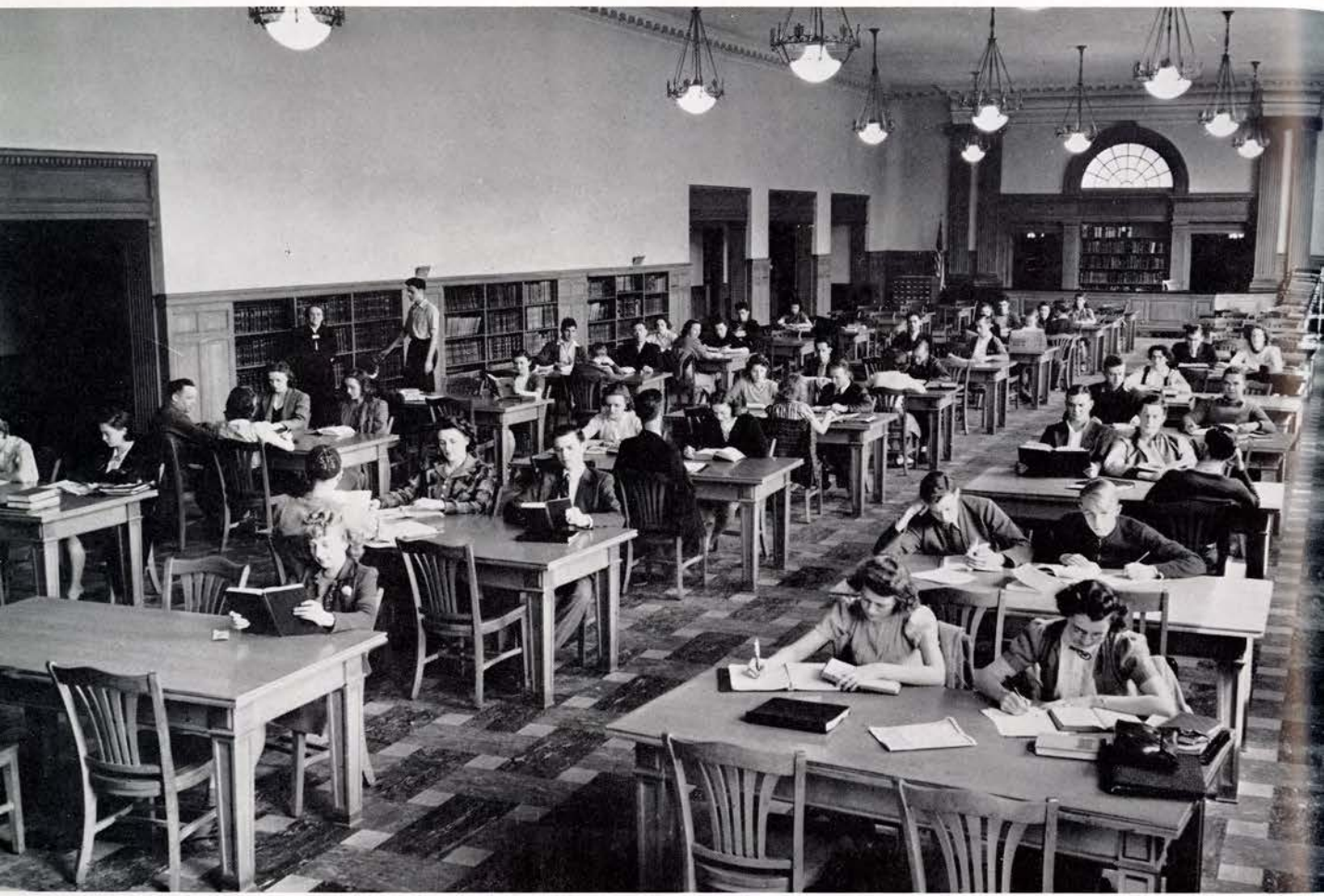
Roderick Dail	Associate Editor
Sidney Harrell	Advertising Agent
Kathleen Condra, Edison Day	Organizations Editors
Edith Dunbar	Sports Editor
William Richardson	Photographic Editor
Thelma Bennett	Snap-Shot Editor
Thelma Goforth	Secretary
Cowan Hood	Circulating Manager
Kent Herrin, Rex Depew	Student Advisors
Dr. Frank Field	Faculty Advisor
Scott Herrin	Junior Editor
Pauleene Banner	Junior Business Mgr.



Editor-in-Chief	Business Manager
MINTER L. HAYNES	WALTER M. HENDRIX

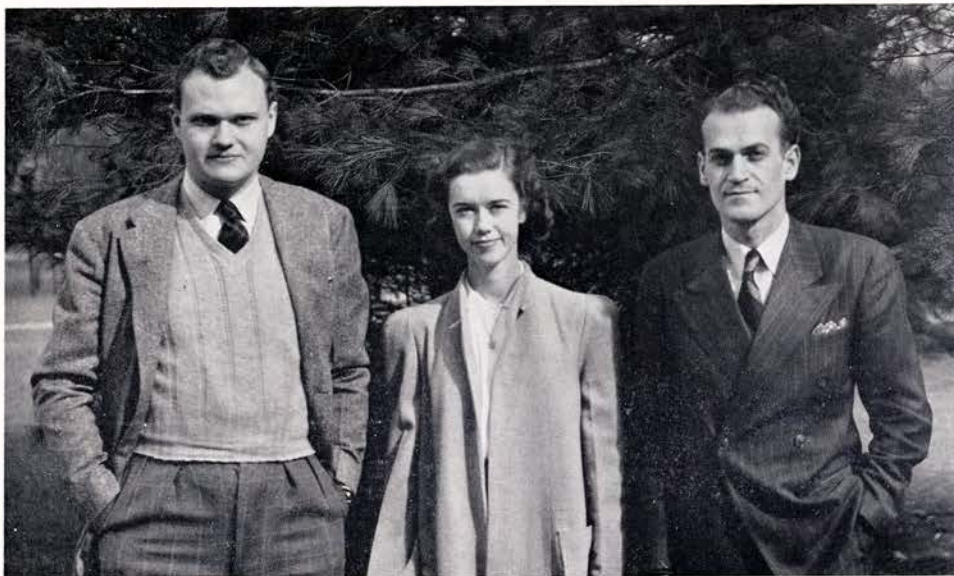
THE BUCCANEER STAFF







CLASSES



Earl Hunt, Jr.
President

Fred Woods
Vice-President

Lettie Joe Rankin
Secretary and Treasurer

Class of Nineteen Forty One

It is hard for us, as Seniors, to bid our dear old Alma Mater, the State Teachers College, farewell. We have walked hand in hand along the campus paths; we have studied together the difficult problems; side by side, we have pushed toward that thing known as graduation and now, today, we are ready to make that final step across the finishing line.



CATHERINE LENORE ANDERSON

Johnson City, Tenn.
English, History
Transfer from Milligan College, '38; Footlight Players '38-'40; Tau Alpha Omega, '38-'40; Pi Sigma, '39-'41.

HELEN JANE ANDERSON

Johnson City, Tenn.
Home Economics, French
Home Economics Club, '39-'41; Pi Sigma, '40-'41.

ANNE LOUISE BACON

Johnson City, Tenn.
French, English, History
Home Economics Club, '37-'40; Footlight players, '37-'40, Sec. & Treas., '39-'40; Methodist Youth Group, '39; Twirlers, '39-'40.

GEORGIA SUE BARNES

Blountville, Tenn.
English, Latin
F. T. A., '39-'41.



THELMA ISABELLA BENNETT

Johnson City, Tenn.
Home Economics, History
Choir, '37-'41; Glee Club, '37-'41; S. T. C. Club, '37-'41, Vice-Pres., '41; Footlight Players, '37; Tennessee Collegian, '41; Buccaneer, '41; Sigma Omega, '38-'41; Twirlers, '38-'40; Head Drum Major.

ORVILLE EUGENE BOGART, JR.

Erwin, Tenn.
Science, History
Senior Representative to Student Council; Band, '37-'38, '40-'41; Choir, '37-'38; Glee Club, '37-'39.

HANSEL CLEOVIS BYRD

Sevierville, Tenn.
Transfer S. T. C.; Murfreesboro; Industrial Arts; Social Science; Pestalozzians, '38-'41.

KATHLEEN CONDRA

So. Pittsburg, Tenn.
Ph. Ed., Social Science
Senior Representative to Student Council; F. T. A., '39-'41, 1st Vice-Pres., '40; Buccaneer, '41; Y. W. C. A., '38-'41, 1st Vice-Pres.; Sigma Omega, '38-'41, Secretary, '40-'41; Intramurals, '39-'41; Head of Sports; Drill Squad, '39-'40; Honor Roll, '38-'41; Who's Who, 41.

CLASS OF NINETEEN FORTY - ONE



EDITH CATES
Hampton, Tenn.
Transfer Carson Newman
English, History



**BENJAMIN DICKERSON
CATON**
Newport, Tenn.
Chemistry, English,
Mathematics
Glee Club, '37-'38; Science
Club, '37-'39; Pestalozzians,
'37-'41; Intramurals, '37-'40.



ELIZA MONIES COMPTON
Brush Creek, Tenn.
English, Physical Education,
Social Studies
Transfer from Virginia Inter-
mont College; Intramurals, '38-
'41; Twirlers, '39-'41; All Famous
Volleyball Team, '39-'41.



**LUCYLLE HAMMOND
COOPER**
Elizabethton, Tenn.
Social Science, English
Transfer from Emory and
Henry College.



SAVEL ELDORA DAWSON
Mosheim, Tenn.
Transfer from Asheville
Teachers College; Home Eco-
nomics Club, '39-'41 Y. W.
C. A., '39-'41; Sigma Omega,
'39-'41.



**NAOMI PHYLLIS
DONALDSON**
Knoxville, Tenn.
English, History
Transfer from Union Col-
lege; Y. W. C. A., '39-'40;
Sigma Omega, '39-'41; Intra-
murals, '39-'40.



EDISON VICTOR DAY
Johnson City, Tenn.
Music, English
Band, '37-'41, '40-'41 Lieut.;
Glee Club, '37-'41, Vice-Pres.,
'38-'39; S. T. C., '40-'41; Or-
chestra, '37-'41; President, '38-
'39; Librarian, '39-'41; Ten-
nessee Collegian, '40-'41; Buc-
caner, '41; Twirlers, Instruct-
or, '41.



REX DENWIL DEPEUW
Johnson City, Tenn.
Latin, Math, English
Choir, '37-'41; Glee Club,
'37-'41; S. T. C., Club, '37-'41;
Men's Chorus, '40-'41; Pi
Kappa Delta, '37-'41, Sec.,
'39-'40, Pres., '40-'41; Inter-
national Relations, '39-'41;
Tau Alpha Omega, '37-'40;
Assoc. Editor, Tennessee Col-
legian, '40-'41; Buccaneer Staff,
'40-'41; State Freshman De-
bate Championship, Varsity
Debate, '37-'41.

STATE TEACHERS COLLEGE



FRANCIS RODERICK DAIL

Erwin, Tenn.
English, Social Science
Transfer from Asbury College and Emmanuel College; Glee Club, '39-'40; International Relations, '40-'41; Associate Editor Buccaneer, '40-'41; Miracle Book Club, '40-'41.



RUBY DOAK

Johnson City, Tenn.
English, Geography, Social Science



HAROLD DOBSON

Tusculum, Tenn.
Social Science, Phy. Ed.
Transfer from Tusculum College; Pestalozzians, '39-'41; Boys' "T" Club, '41.



ELMER ROSSE DROKE

Jonesboro, Tenn.
Latin, English, French
Choir, '38-'41; Glee Club, '37-'41; S. T. C., '40-'41; Men's Chorus, '40-'41; Honor Roll, '39-'40.



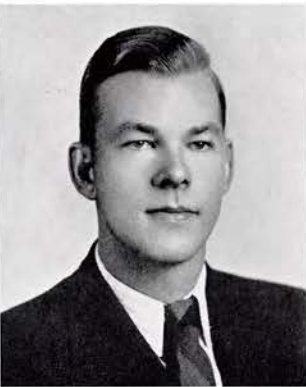
**KATHRYN COOPER
LOCKETT**

Johnson City, Tenn.
Latin, English, Art
F. T. A., '40-'41; Pres. M. B. C., '40-'41; Youth Council, '40-'41; Honor Roll.



**JOHN ROBERT
LOVEGROVE**

Erwin, Tenn.
Phy. Ed., History, Latin
President Student Body; Vice-Pres. F. T. A., '41; Pestalozzians, '38-'41; Boys' "T" Club, '38-'41, Pres. '40-'41; Football, '38-'41; Basketball, '38-'41, Captain, '39-'41; Vice-Pres. Junior Class; Honor Roll, '39-'40; All Smoky Mountain Conf. Basketball guard, '39, '40, '41.



DAVID BUCK McINTURFF

Unicoi, Tenn.
Ind. Arts, Science



WILLIAM CLYDE McAMIS

Alifton, Tenn.
Science, English
C. P. T. Course, Primary and Advanced.

CLASS OF NINETEEN FORTY - ONE



MARY DELL GALLOWAY
Johnson City, Tenn.
Health and Physical Educa-
tion, Social Science, English,
French



**THELMA BEATRICE
GOFORTH**
Erwin, Tenn.
Latin, English, History
Band, '37-'39; Choir, '38-'40;
Glee Club, '37-'41; Orchestra,
'37-'39; Science Club, '37-'41;
Pi Kappa Delta, '38-'41, Sec.
'39-'40; I. R. C., '39-'41; Ten-
nessee Collegian, '37-'41;
Buccaneer, Sec. '40-'41; Y. W.
C. A., '37-'41, Pres. '40-'41;
Methodist Youth Group, '37-
'41; M. B. C., '39-'41; Youth
Council, '37-'41.



**RUTH MARGARET
GREENE**
Johnson City, Tenn.
Geography, Art
Glee Club, '37-'41; S. T. C.
Club, '40-'41; Footlight Play-
ers, '39-'40; Baptist Student
Union, '39-'40; Sigma Omega,
'37-'41, Treas. '38-'39; Drill
Squad, '40; Twirlers, '39-'40;
Honor Roll, '41.



**GENEVA PRISCILLA
GRINDSTAFF**
Butler, Tenn.
English, Home Economics
Home Economics Club, '37-
'41; Drill Squad, '37.



RAY DANA GRINDSTAFF
Elizabethton, Tenn.
Social Science, Music
Band, '40-'41; Choir, '34-'35,
'40-'41; Glee Club, '34-'35,
'40-'41; S. T. C. Club, '41;
Men's Chorus, '34-'35, '40-'41;
M. B. C., '41; Honor Roll.



RUTH MARIE GROSECLOSE
Kingsport, Tenn.
English, Geography
Footlight Players, '38-'41;
Y. W. C. A., '41; Drill Squad,
'37-'38; Honor Roll.



BETTY HINTON HAGER
Johnson City, Tenn.
Geography, English



PATTON LEMONT HALL
Jonesboro, Tenn.
Home Economics, History,
Social Science
Home Economics Club, '38-
'41.

STATE TEACHERS COLLEGE



MARGARET HAMMER

Boyd's Creek, Tenn.
Phy. Ed., English, History
Home Economics Club, '36-
'40; Y. W. C. A., '39-'41;
Intramurals, '36-'41; Head of
Horseshoe, Baseball, Volley
Ball; Girls' "T" Club, '40-'41;
Drill Squad, '36-'41.

MARTHA LYLE HANCOCK

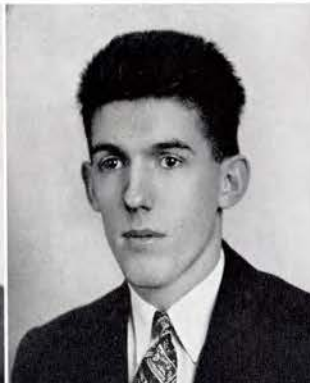
Johnson City, Tenn.
Geography, English
M. B. C., '40-'41.

SIDNEY THOMAS HARRELL

Johnson City, Tenn.
Footlight Players, '39-'41; I.
R. C., '40-'41; Buccaneer, '41;
Baptist Student Union, '39-'40;
Sigma Omega, '37-'41; M. B.
C., '40-'41.

MINTER LANDON HAYNES

Johnson City, Tenn.
Industrial Arts, English,
History
F. T. A., '40-'41; Tennessee
Collegian, '39-'41; Buccaneer,
'40-'41, Editor '41.



**MARGARET REBECCA
HENDERSON**

Johnson City, Tenn.
Home Economics, History
Home Economics Club, '38-
'41; M. B. C., '40-'41.

**WALTER MILLARD
HENDRIX**

Johnson City, Tenn.
Physical Science, Biological
Science
F. T. A., '41; Science Club,
'39-'41; Footlight Players, '40-
'41; Collegian, '39-'41; Buc-
caneer, '39-'41, Bus. Mgr., '41;
Honor Roll.

KENT HERRIN

Johnson City, Tenn.
English, History
Vice-Pres. Student Body,
'41; Choir, '37-'38; Glee Club,
'37-'38; Footlight Players, '37-
'38; Pi Kapa Delta, '37-'41,
Pres. '38; I. R. C., '39-'41;
Tau Alpha Omega, '38-'39;
Tennessee Collegian, '38-'41,
Editor-in-chief, '40-'41; Buc-
caneer, '41; Student Council,
'38-'41; Sophomore Vice-
Pres.; Junior President; Who's
Who, '41.

**ISABELLE BREEMAN
HOLMES**

Chattanooga, Tenn.
Mathematics, English, French,
History
F. T. A. '39-'41; Tau Alpha
Omega, '37-'41; Tennessee
Collegian, '37-'41, Associate
Editor, '41; Y. W. C. A., '37-
'41; Sigma Omega, '37-'41,
Pres., '40-'41; Junior Class
Secretary, '39-'40; Who's Who
'40-'41.

CLASS OF NINETEEN FORTY - ONE



COWAN COLUMBUS HOOD, JR.

Knoxville, Tenn.
Ind. Arts, English, Art
F. T. A., '40-'41; Tennessee
Collegian, '40-'41; Buccaneer,
'41; Methodist Youth Group,
'37-'41; M. B. C., '40-'41;
Pestalozzians, '37-'38; Honor
Roll.



EARL G. HUNT, JR.

Johnson City, Tenn.
English, History
Pi Kappa Delta, '37-'41; I.
R. C., '39-'41; Tau Alpha
Omega, '37-'40, Vice-Pres. '40;
Methodist Youth Group, '38-
'41; Youth Council, '37-'41,
Chairman, '37-'38; Freshman
Vice-Pres.; Sophomore Pres.;
Senior Pres.; Honor Roll; In-
tercollegiate speech honors.



DEAN JAYNES

Sneedville, Tenn.
Chemistry, Social Science,
English



ROBERT LEE KEEFAUVER

Jonesboro, Tenn.
History, English
M. B. C., '41.



DON JEROME KELLER

Greeneville, Tenn.
Ind. Arts, Science, English
Science Club, '40-'41; Pesta-
lozzians, '36-'37; "T" Club,
'37; Football, '37-'39; Baseball,
'40-'41; C. P. T., '40.



WILLIAM MELVILLE KELLY

Chattanooga, Tenn.
Music, Science, English,
History



DOROTHY VIVIAN KING

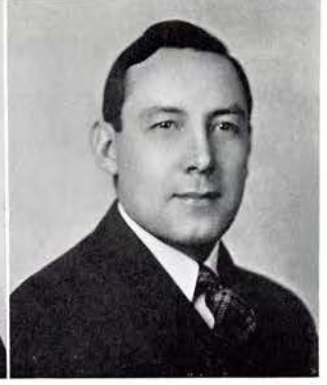
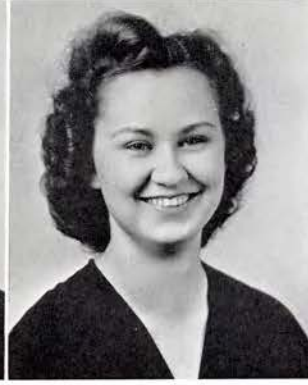
Johnson City, Tenn.
Physical Education, French
Choir, '39-'41; Glee Club,
'37-'41; Footlight Players, '38-
'40; Pi Sigma, '38-'41; Intra-
murals, '37-'41, Asst. Mgr.,
'40.



MARGARET NOLA KOONCE

Johnson City, Tenn.
Home Economics, English,
Science
Home Economics, '40-'41;
F. T. A., '38-'41; Student Ac-
tivities Committee, '40-'41.

STATE TEACHERS COLLEGE



HARLYN WAYNE LACY

Roan Mountain, Tenn.
English, History, Phy. Ed.
Transfer from Appalachian
State; Glee Club, '36-'38;
Men's Chorus, '38; Science
Club, '40-'41; Footlight Play-
ers, '37-'38; Pi Kappa Delta,
'37-'38; Baptist Student Union,
'38, Vice-Pres.; Pestalozzians,
'37-'41; Honor Roll; Track,
'37-'38.

ELERY ARNOLD LAY

Kingsport, Tenn.
History, English, Social
Science
Transfer from Lincoln Me-
morial University; Science
Club, '40-'41; Footlight Play-
ers, '40-'41; I. R. C., '40-'41;
Pestalozzians, '37-'41; Honor
Roll; Pres. Summer Junior
Class.

LYDIA BELL LEONARD

Telford, Tenn.
English, History, French
Glee Club, '37-'38; Orches-
tra, '37-'40; S. T. C. Club,
'40-'41; F. T. A., '41; I. R. C.,
'39-'41, Pres., '40-'41; Y. W.
C. A., '37-'41; M. B. C., '41;
Honor Roll.

WALTER JAMES LEWIS

Johnson City, Tenn.
Music, Biology
Glee Club, '38-'41; Or-
chestra, '38; M. B. C., '40-'41.



EDITH PAULINE DUNBAR

Chuckey, Tenn.
Home Economics, English
Home Economics Club, '37-
'41, Pres., '40-'41; Buccaneer,
'40-'41; Intramurals, '37-'41;
"T" Club, '39-'41; Drill Squad,
'37-'39.

WARREN FRANCIS DUNBAR

Erwin, Tenn.
Industrial Arts, Social Science

LAUTON EDWARDS

Cumberland Gap, Tenn.
Industrial Art, Social Science
Transfer from T. P. I.; F. T.
A., '40-'41; Honor Roll.

JERRY FRANKLIN FUDGE

Surgoinsville, Tenn.
Transfer from Tusculum
College; Pestalozzians, '34-
'38.

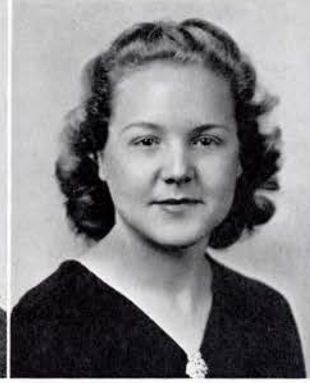
CLASS OF NINETEEN FORTY - ONE



GARRETT H. MASHBURN
 Mosheim, Tenn.
 Phy. Edu., Geography, Social
 Science
 Baseball Mgr., '39; Pesta-
 lozzian Treas., '40; "T" Club,
 '39-'41.



CHARLES MANSON MOCK
 Elizabethton, Tenn.
 Ind. Arts, General Science



ALMA PUGH NANCE
 Johnson City, Tenn.
 Glee Club, '37-'38; I. R. C.,
 '39-'41, Sec.-Treas. '40-'41.



WILMA LEONA NEFF
 South Pillsburg, Tenn.
 Geography, English, Health
 Honor Roll.



CHARLES C. PRICE
 Johnson City, Tenn.
 English, History
 Glee Club, '24-'25; Honor
 Roll.



ELIZABETH SUE RADER
 Greeneville, Tenn.
 Home Economics, English
 Transfer from Tusculum and
 Asheville Normal; Choir, '39-
 '41; Glee Club, '39-'41; Home
 Economics Club, '39-'41; Foot-
 light Players, '39-'41; Tau
 Alpha Omega, '40-'41; Y. W.
 C. A., '39-'41, Treas., '40;
 Sigma Omega, '39-'41, Vice-
 Pres., '40.



VIRGINIA KISER RADER
 Whitesburg, Tenn.
 Home Economics, English
 Home Economics Club, '38-
 '41, Vice-Pres., '40-'41; Y. W.
 C. A., '37-'41; Intramurals, '37-
 '41; Drill Squad, '37-'40.



LETTIE JOE RANKIN
 Chattanooga, Tenn.
 Home Economics, French
 Home Economics Club, '38-
 '41; F. T. A., '39-'41, Secretary
 '39-'40; Tau Alpha Omega,
 '38-'40, President '39-'40; Ten-
 nessee Collegian, '37-'38, as-
 sistant business manager; Y.
 W. C. A., '38-'41; M. B. C.,
 '39-'41; Sigma Omega, '38-'41,
 President, '39-'40; Who's Who
 '41; Honor Roll.

STATE TEACHERS COLLEGE



WILLIAM L. RICHARDSON
Johnson City, Tenn.
Chemistry, Biology
Band, '35-'37; Buccaneer,
'40-'41.

ANNABEL ESTHER SCOTT
Washington College, Tenn.
Transfer from University of
Tenn.; Pi Sigma, '40; Barn
Warming Queen, '40.

HAROLD ROBERT SLAGLE
Erwin, Tenn.
Industrial Arts, Science
Pestalozzians, '37-'41; "T"
Club, '40-'41; Primary, Secondary
C. P. T.

EMILY ANN STAFFORD
Johnson City, Tenn.
English, Music
Transfer from Appalachian
State; Glee Club, '33-'35.



VIRGINIA McKENNY
ST. JOHN
Piney Flats, Tenn.
Home Economics Club, '40-
'41; Pi Sigma, '40-'41.

BARBARA KAYE TAYLOR
Kingsport, Tenn.
Transfer from Lees-McRae
College; Band, '39-'41; Choir,
'39-'41; Glee Club, '39-'41;
Orchestra, '39-'41; S. T. C.
Club, '39-'41; Footlight Play-
ers, '39-'41; Y. W. C. A., '39-
'41; Sigma Omega; Majorette
of Twirlers, '39-'41; Honor
Roll.

ANNA WILLIAMS THOMAS
Johnson City, Tenn.
English, History
Pi Sigma, '38-'41, Vice-Pres.
'39, Reporter, '40, Vice-Pres.
'41.

LOIS MARIE TURBYFILL
Green Mountain, N. C.
Home Economics, English
Transfer from Mars Hill
College; Y. W. C. A., Vice-
Pres., '39-'40.

CLASS OF NINETEEN FORTY - ONE



FRED BROWNLOW WOODS
Chattanooga, Tenn.
History, Latin, English
Glee Club, '38-'39; F. T. A.,
'39-'41; President, '40; Tau
Alpha Omega, '39-'40; Ten-
nessee Collegian, '40-'41 Buc-
caneer, '41; Pestalozzians,
'39-'41.



MARTHA ELIZABETH VEST
Johnson City, Tenn.
History, English, French,
Music
Transfer from Virginia In-
termont; Pi Sigma, '39-'41;
Honor Roll, '40-'41.



MARY ANN KYKER
Johnson City, Tenn.
English, Social Studies
Student Body Secretary;
Glee Club, '38-'41; Footlight
Players, '38-'41; Tau Alpha
Omega, '38-'41; Vice-Pres.,
'39; Tennessee Collegian, '38;
Pi Sigma, '38-'41.



SELMA MORROW
Telford, Tenn.
Home Economics, Social
Science, English
Transfer from Tusculum Col-
lege; Home Economics Club,
'41; Intramurals, '38-'39.



GEORGE ANDERSON WEST
Rutledge, Tenn.
Industrial Arts, Social Studies
Pestalozzians, '37-'41, Pres.,
'40-'41; Boys' "T" Club, '38-
'41, Sec.-Treas., '40-'41; Bas-
ketball, '37-'41, Capt, '40-'41.



FLOVA MAE WELBORN
Erwin, Tenn.
Transfer from College of
Charkston; Y. W. C. A., Spring
'39-'41.



MARY GRACE WHITE
Jonesboro, Tenn.
Social Science, English, Health,
Physical Education
International Relations Club,
'40-'41; Honor Roll.



JAMES CECIL WHITLOCK
Washington College, Tenn.
English, History, French
Transfer from University of
Tennessee; International Rela-
tions Club, '40-'41.

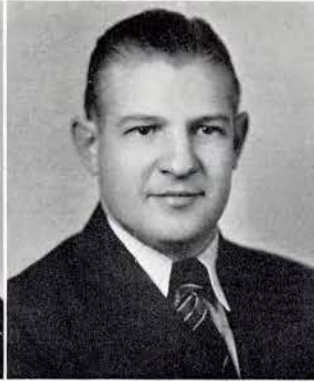
STATE TEACHERS COLLEGE



LOIS GENEVA HALE
 Morristown, Tenn.
 English, Home Economics
 Transfer from Carson-New-
 man; Home Economics, '38-
 '39; Y. W. C. A., '37-'39.



AMY COLLINS JACKSON
 Elizabethton, Tenn.
 English, History, Geography,
 Music



WILLIAM FRANKLIN HENRY
 Calhoun, Tenn.
 Science, History, English



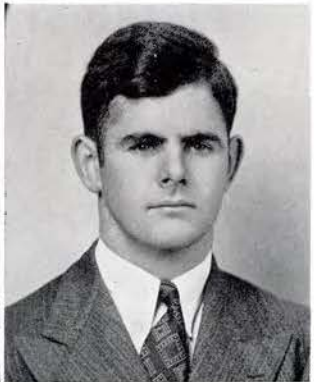
NELLE KINCAID
 Etowah, Tenn.
 Home Economics, English,
 History
 Transfer from Lincoln Me-
 morial University; F. T. A.,
 '39-'40; Y. W. C. A., '38-'40;
 Sigma Omega, '39-'41; Honor
 Roll.



FRANK HECK
 Speedwell, Tenn.
 Industrial Arts, Social Studies,
 Mathematics
 Honor Roll.



HOPE CORRELL
 Newport, Tenn.
 Home Economics, Social
 Science, Art
 Home Economics Club, '38-
 '39; Y. W. C. A., '35-'37; In-
 tramurals, '35-'36.



JOHN FRANKLIN BELEW
 Johnson City, Tenn.
 Social Science, English,
 Geography
 Footlight Players, '38-'41;
 Army.



HELEN KATHERINE WEBB
 Bluff City, Tenn.
 History, Physical Education,
 English
 Footlight Players, '37-'38;
 Y. W. C. A., '37-'38; Intra-
 murals, '37-'38.

CLASS OF NINETEEN FORTY - ONE



MARY IRENE MASTERS
Telford, Tenn.
Home Economics, English
Home Economics Club, '40-
'41.



CARRIE M. THOMAS
Elizabethton, Tenn.
Science, English, German
Transfer from University of
Tennessee.



UNA INEZ OTTINGER
Parrottsville, Tenn.
Social Science, Home Econo-
mics, English
Transfer from Carson-New-
man College.



LONNIE LEE KEETON
Oneida, Tenn.
Industrial Arts, History, Social
Science
Extension University of Ten-
nessee, Radford State Teach-
ers College; Pestalozzians, '30-
'36; Honor Roll.



RUTH SHOUN COTTRELL
Elizabethton, Tenn.
English, History



JOHN B. GOURLEY
Chuckey, Tenn.
History, Science, English



TIP ROBERTSON
Pigeon Forge, Tenn.
English, History, Physical
Education, Geography
Glee Club, '35-'36.



**LEATHA MOULDER
GARRISON**
Rockwood, Tenn.
Mathematics, Geography
Transfer from University of
Tennessee; Band, '37-'38; Hon-
or Roll.

S T A T E T E A C H E R S C O L L E G E

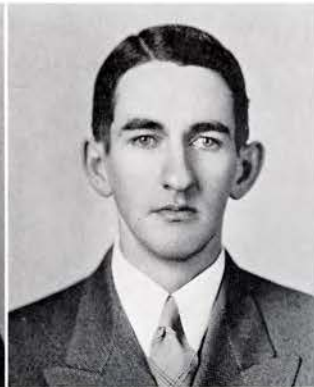


IDA JANE HORNER
 Morristown, Tenn.
 English, History, Geography
 Y. W. C. A., '39-'41; Honor
 Roll.

**BLANCHE KEYS
 ARMENTROUT**
 Fall Branch, Tenn.
 English, Geography, History
 Transfer from Tennessee
 Wesleyan.

FRANCES CARBAUGH
 Johnson City, Tenn.
 Home Economics, Music,
 History
 Y. W. C. A., '36-'37; Home
 Economics Club, '38-'39; Glee
 Club, '37-'40; A Capella Choir,
 '38-'40; S. T. C. Club, '39-'41;
 Honor Roll.

GRACE VIRGINIA WATKINS
 Kingsport, Tenn.
 Social Studies, English



ROBERT JACKSON FUGATE
 Abington, Va.
 Social Science, English,
 Biology
 Transfer from Emory and
 Henry College; Footlight Play-
 ers, '40; Tennessee Collegian,
 '40-'41; Recognized Poet; Com-
 poser-Pianist.

**BARBARA REYNOLDS
 WALKER**
 White Pine, Tenn.
 English, Social Studies
 Glee Club, '35; Y. W. C. A.,
 '33-'41; Pi Sigma, '33; Intra-
 murals, '33-'35.

RICHARD KYLE TOMLINSON
 Indian Springs, Tenn.
 Latin, English
 Transfer from University of
 Tennessee; Honor Roll.

FERN TROTTER
 Dayton, Tenn.
 English, Chemistry, History
 Transfer from Berry College;
 Miracle Book Club, '39.

CLASS OF NINETEEN FORTY - ONE

Pictures Not Available

EVELYN BELL

Jonesboro, Tenn.
English, History

JOE WILLIAM DAVIS

Huntland, Tenn.
English, Social Science

HATTIE GERTRUDE HENRY

Bluff City, Tenn.
Home Economics, English, Social Science

SANNA BARLOW

Johnson City, Tenn.
Social Science, English

EDITH ALMA DUGGER

Elizabethton, Tenn.
Social Science, English, Geography
Transfer from Carson-Newman.

LAWRENCE HENRY HARLESS

Corryton, Tenn.
Geography, History, English

JOHN HUBERT JENNINGS

Erwin, Tenn.
French, English

GRACE BONNER

Athens, Tenn.
Social Science, English, Geography

EDWIN AVERY SHUGART

Bluefield, Va.
History, English
Transfer from Hiwassee.

IDUS CHANDLER

Flag Pond, Tenn.
English, History, Social Science

Alma Mater

In the shadow of the mountains, under skies
of blue,

Stands our dear old Alma Mater, glorious to
view.

Sound the chorus, speed it onward, thee we'll
never fail,

Hail to thee, our Alma Mater, hail to thee,
all hail!

In thy walls we formed our friendships, dear
old college home,

And to thee we pledge our heart, wherever
we may roam.

Sound the chorus, speed it onward, thee we'll
never fail,

Hail to thee, our Alma Mater, hail to thee,
all hail!

S T A T E T E A C H E R S C O L L E G E



Class of Nineteen Forty-Two

We, the Class of Nineteen Forty-Two, have come safely through these three years of initiation of college with the guiding hands of the graduating seniors. Now we, as the Junior Class, are ready to assume the responsibilities of the Senior Class.

Thomas Morris

President

Gordon McFaddin

Vice-President

Inez Merritt

Secretary

Dorotha Harrod

Treasurer

JUNIORS



Orrille Huffaker
 Earnest Howell
 Mary Ryburn
 Virginia Baird
 Mildred Shoun

George Wise
 Matalene Hunt
 Marion Holt
 Pearl Hurd
 Ora Bess Hunter

Mary Hyder
 Lavetta Keck
 Charlotte Swadley
 Virginia Swingle
 Carl Sanders

Ethel Jett
 Caroline M. May
 Mary Winslow
 Manley Howard
 Lida Cable

Hazel Blevins
 Nellie Grigsby
 Elizabeth Holly
 Harrison Marshall
 Lucille Elliott

Carroll Sarver
 Ruby Epley
 Virginia Cox
 Dorothy Butler
 Dorothy Fife

Richard Howell
 Ruby Munsey
 Glen Kitts
 Pauline Myers
 Elizabeth Dyer

Eleanor Keys
 Roberta Keck
 Willodene Gibson
 Kermit Wolfe
 Almira Chase

Scott Herrin
 Lois Moody
 Juanita Millsaps
 Willard Grubb
 Katherine Miller

Edward Murray
 Dorothy Dewald
 Louis Byrd
 Winifred Black
 Ruth May

JUNIORS

Kearney Rogers
 Mary Milburn
 Carl Johnson
 William Pearson
 Elizabeth Knight

Gordon McFaddin
 Gertrude Davis
 Phillip Fletcher
 Mary D. Ottinger
 Bessie Fay Wilkes

William Mitchell
 Iva Liner
 John Lundy
 Ann King
 Florence Coward

Calvin Dunbar
 Irene Byrd
 Maxine McClain
 Louise Seaver
 George Rowe

Irene Spivey
 Dwight Tilson
 Eloise Talley
 Thomas Morris
 Clara Gaines

Ray Osborne
 Elizabeth Fletcher
 Josephine Bowers
 H. C. Bolton
 Cornelia Burgan

Frank St. John
 Evelyn Rumbley
 Pauleene Banner
 Fred Cain
 Trula Cardwell

Billie Card
 Milburn Hopkins
 Dortha Harrod
 Frances Wheeler
 Paul Scott

Beatrice Webb
 Ellis Sabin
 Inez Merritt
 Woody Hampton
 Phyllis Wine

William J. Thomas
 Lawrence Fox
 Katheryn King
 Katherine Booth
 Burgess Kiser





S O P H O M O R

John Selman
President

Love Broyles
Vice-President

Jeanne Lowery
Secretary

Dora Hale
Treasurer



E S





F R E S H M

James Ellis

President

Lucy Taylor

Secretary

Martha Fleenor

Treasurer



E N







ATHLETICS



Carter Hall



Ritter Hall



B U C C A N E E R S

Johnson
 Masengill
 P. Boring
 Rice
 Buchanan
 Holt
 Hunt

Moore
 Brookshire
 Hyder, Asst. Mgr.
 Sabin
 Carpenter, Co-Captain
 W. France
 Dubbs

Hillenbrand
 Mitchell
 Nichols
 Goforth
 Green
 W. Parsley, Co-Captain
 Curtis

S. France
 Dobson, Manager
 Lawson
 Martin
 Shugart
 Meeks
 Reed

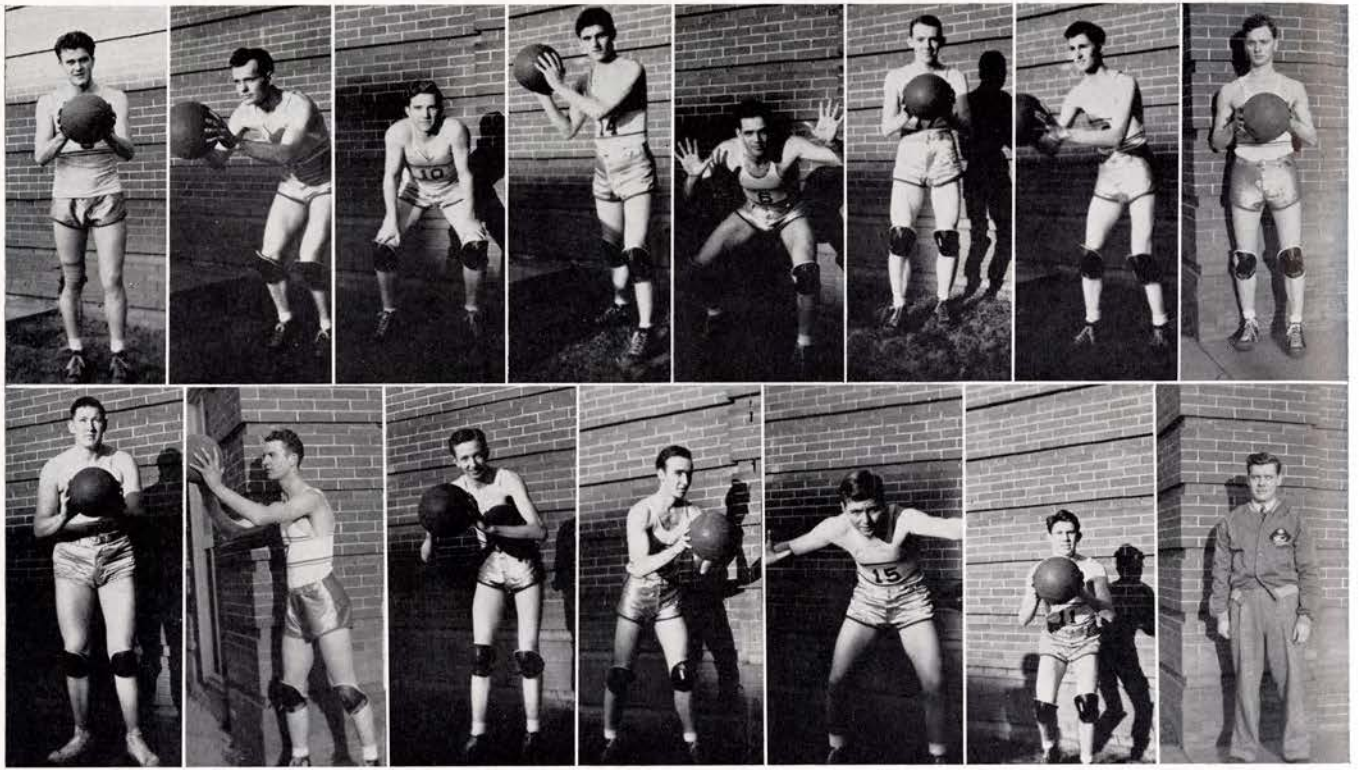
Schedule

September 21
 September 28
 October 5
 October 12
 October 19
 October 26
 November 2
 November 9

Emory-Henry
 Milligan
 Carson-Newman
 Emory-Henry
 Tusculum
 Maryville
 Carson-Newman
 Cumberland University



Coach McMurray



B A S K E T B A L L

John Lovegrove, Captain
 Reno Burleson
 Bert Shipley
 Bill Moore

Edward Murray
 Fred Hamblin
 George West
 Ralph Murray

John Lundy
 Jess Bell
 Hamilton Ray
 John Exum

Joe Goforth
 Carl Keebler
 Edwin Shugart, Manager

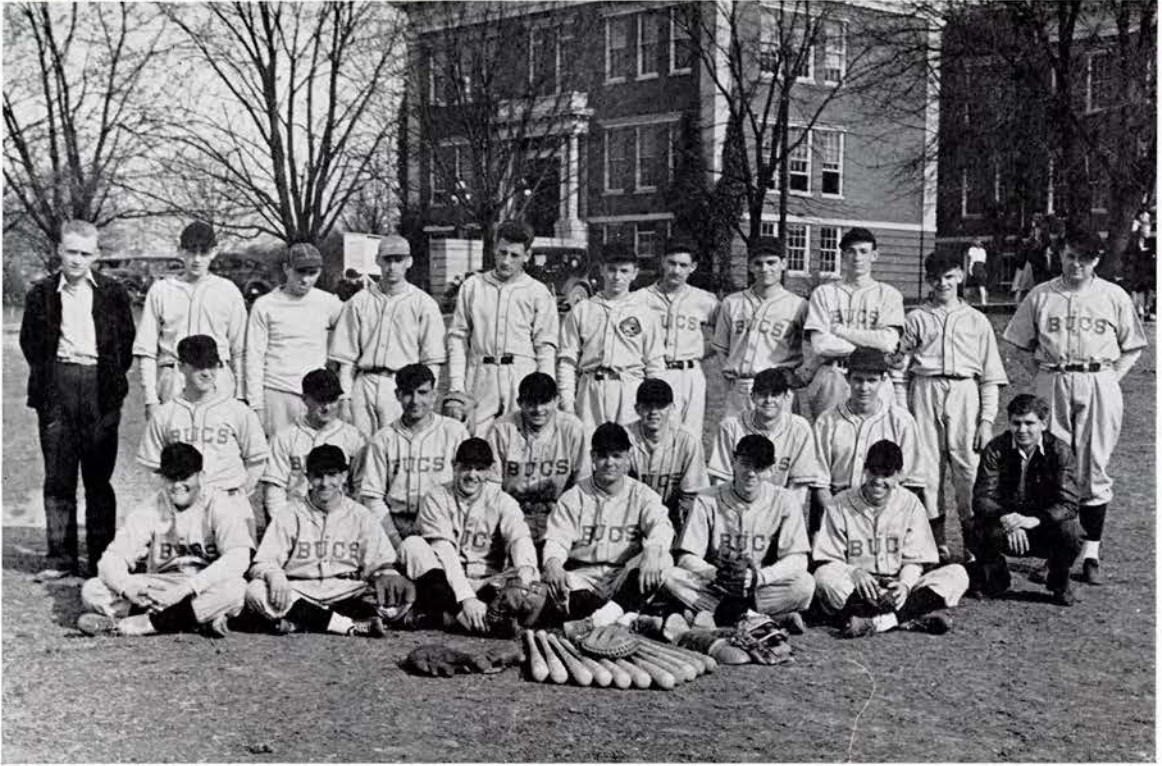
Schedule

January 16
 January 18
 January 21
 January 25
 January 30
 February 4
 February 8
 February 11
 February 15

Emory-Henry
 Carson-Newman
 Milligan
 Maryville
 L. M. U.
 Maryville
 Tusculum
 Carson-Newman
 L. M. U.

February 17
 February 20
 February 21
 February 28
 March 5
 March 12
 March 19
 March 26

Tusculum
 Milligan
 Emory-Henry
 Milligan
 Carson-Newman
 Emory-Henry
 Tusculum
 Maryville



B A S E B A L L

First Row: Peterson, Harliss, Hammer, France, Hamblin, Williams.
 Second Row: Kimsey, Hitson, Keller, Martin, Buchanan (Captain), Haun, Mitchell, Smith (Manager).
 Third Row: Keaton (Manager), Smithson, Manis, Lee, Curtis, Rowe, B. Moore, Ponder, Moore, Coach Mooney.

Schedule

April	2—L. M. U. (there).	28—W. C. T. C. (therer).
	5—Carson-Newman (here).	29—Maryville (there).
	7—Milligan (here).	30—Roanoke (here).
	15—Carson-Newman (there).	
	18—L. M. U. (here).	May
	19—Tusculum (there).	2—W. C. T. C. (here).
	24—Emory-Henry (here).	5—Maryville (here).
	25—Tusculum (here).	8—Emery-Henry (there).
		9—Roanoke (there).



T E N N I S

Archie McNeal, Coach
 Tip Williams
 Ed Robeson
 Joe Goforth

Jimmy Ellis
 Jim Nave
 Roger Gibson
 Jay Harville

Fred Still
 Paul Sherwood
 Steve Carroll
 Wilson Barker

Homer Isbell
 James Kirkpatrick
 Frank Tannowitz
 Paul Reed, Manager

Schedule

April 4—Appalachain (here).
 5—Hope (here).
 7—Emery-Henry (there).
 10—L. M. U. (here).
 12—Muhleberg (here).
 15—Tusculum (there).
 17—T. P. I. (there).
 18—Maryville (there).
 21—Milligan (there).
 23—Emery-Henry (here).

24—L. M. U. (there).
 26—T. P. I. (here).
 28—Maryville (here).
 30—Tusculum (here).
 May 1—Carson-Newman (here).
 5—Milligan (here).
 9-10—Tennessee Intercollegiate
 Athletic Association
 Tournament.

MEN'S INTRAMURALS

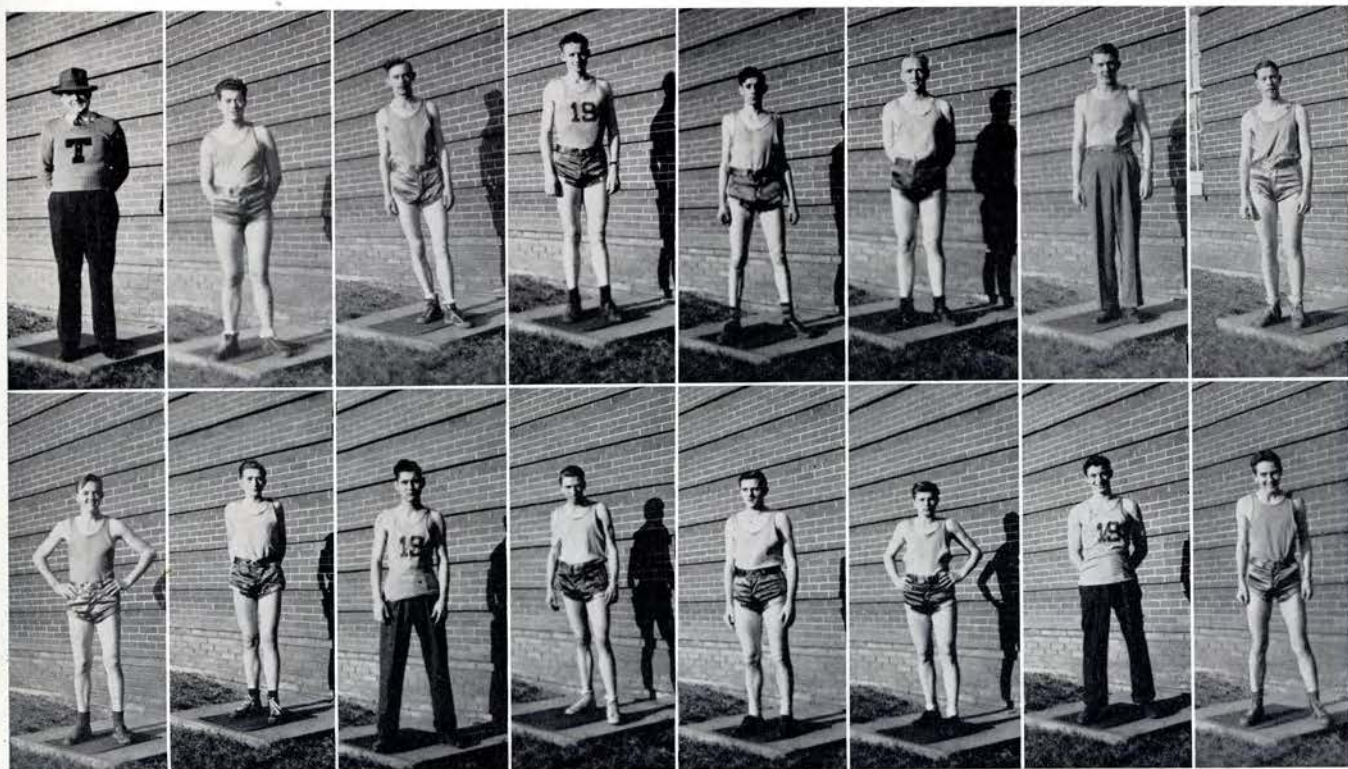
These men formed clubs and played the seasonal sports. This year these men were more active than ever. They had competitive games with organizations on the campus. They turned out good touch football men; then they went into basketball and in the spring they formed a baseball club.

Coach Jim Mooney, Dir.
Milburn Hopkins, Mgr.
Earnest Howell
Earl Goss

Terrell Ponder
Clyde Keaton
Paul Reed
J. S. Dayton

Kenneth Whitaker
Von Brobeck
William Hill
William Jackson

Ralph Price
Roland Smith
Ed Long
Basil Condry





MARGARET HAMMER
Manager



KATHERYN KING
Asst. Manager

W O M E N ' S I N T R A

INTRAMURAL CALENDAR FOR '40-'41

Dance Hour
Intramural Playnight
Tea In Carter Hall

Barnwarmin'
Intramural Style Show
Intramural Sports



Tennis



Archery



Baseball

"J" Club



Drill Squad



Hockey



MURALS

Hiking



Bowling



Badminton







ORGANIZATIONS



THE STUDENT COUNCIL

The student council is composed of a president, a vice-president, a secretary and treasurer elected by the student body with two representatives of the Senior and two of the Junior Classes elected by each class and one representative of the Sophomore and one of the Freshman Class each elected by the class. It seeks to promote democratic activity among the student body and the faculty, and it serves as a channel through which student suggestions and complaints regarding school welfare may be discussed and developed as a purposeful activity.

Members of the year of 1940-41:

John Lovegrove, president; Kent Herrin, vice-president; Mary Ann Kyker, secretary and treasurer.

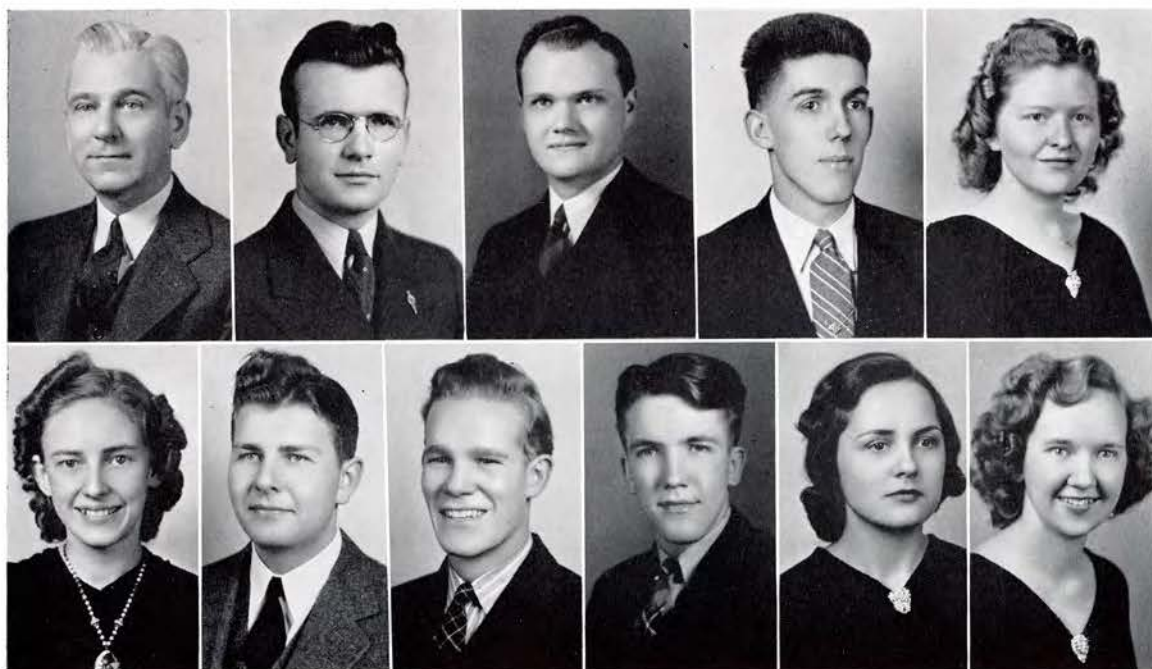
Kathleen Condra and Eugene Bogart, Senior Representatives; Pauleene Banner and Paul Sherwood, Junior Representatives; Jeane Lowery, Sophomore; Julia Chwalek, Freshman.

PI KAPPA DELTA

The 1940-41 season has been one of the most successful in the history of the State Teachers College chapter of Pi Kappa Delta. Seven Varsity debaters participated in the following intercollegiate contests: The Smoky Mountain Men's Tournament at Lincoln Memorial University; the Smoky Mountain Women's Tournament at Virginia Intermont College; the State Tournament at Tennessee Polytechnic Institute; the Appalachian Tournament at Western Carolina Teachers College, Boone, North Carolina; the South Atlantic Tournament at Lenoir-Rhyne College, Hickory, North Carolina; the biennial Pi Kappa Delta Tournament for the Province of the Southeast at Alabama College, Montevallo, Ala.; and the Grand Eastern Tournament at Winthrop College, Rock Hill, South Carolina.

At these contests, local speakers won a large number of honors, including debate championships at the Smoky Mountain and South Atlantic engagements, the Grand Eastern Championship in Clash Debate (a new form), second places in debate at the Appalachian, P.K.D., and Grand Eastern tourneys, and advance to the semi-finals at the State tourney. In addition, local speakers placed first or second in five extempore contests and in five impromptu contests, four in after-dinner speaking, and four in oratory. Other honors were carried off in various experimental speech forms.

Varsity debaters participating include Kent Herrin, Earl Hunt, and Rex Depew, Seniors; Tom Morris and Paul Sherwood, Juniors; Georgia King and Shirley Baumgardner, Sophomores.





PI SIGMA

President
Vice-President

Winifred Black
Anna Thomas
Reporter

Secretary
Treasurer
Jeanne Lowry

Joyce Phlegar
Lula Smith

The Pi Sigma Sorority, the oldest organization of its kind on our campus, has functioned throughout its history to promote loyalty to the school and activities of the campus; to deepen the cultural and social life of the college; and to draw the girls who compose it into closer fellowship during their college life.

We are pleased to announce this year as one of the most successful years in our history. The highlights of the year were so arranged as to furnish good times for all members of our campus. Sadie Hawkins Week will long be remembered by many for it was full of fun for all. It began with a radio program, followed by dance hour, tea in the Girls Dormitory, dinner for Pi Sigmas and their guests, and climaxed with the Sadie Hawkins dance. James Melton, noted concert singer, was welcomed at the Tri-City Airport and entertained with a reception following his concert by the Pi Sigmas. In April, a dinner and theater party were enjoyed by all members and their guests. The school was climaxed by a houseparty in May.

PI SIGMA

Ella Ross, Sponsor
 Winifred Black
 Jeanne Lowery
 Joyce Phleager
 Mrs. Roger Barriger, Sponsor



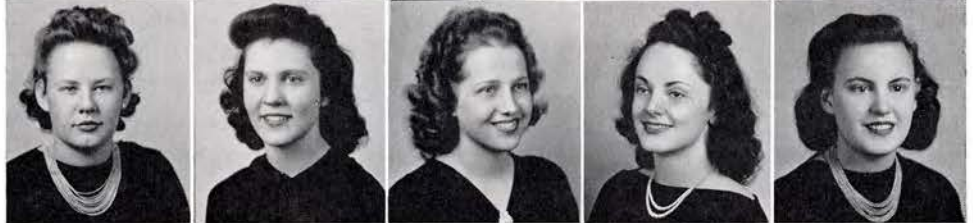
Lula Smith
 Anna Thomas
 Martha Williams
 Helen Anderson
 Kathryn King



Betty Bagby
 Sally Taylor
 Wanda Blevins
 Nellie Grigsby
 Sarah Fink



Mary Ryburn
 Lucy Taylor
 Orrille Huffaker
 Annabel Scott
 Lenore Anderson



Sarah Thomas
 Cornelia Bergan
 Miriam Black
 Frances Shoun
 Burgess Kiser



Martha Vest
 Polly Rumbly
 Virginia St. John
 Henrietta Moser
 Vivian King



Helen Louise Smith
 Elizabeth Dyer
 Mary Martha Keller
 Virginia Swingle
 Louise Seaver





SIGMA OMEGA

This year will be one to remember for the happiness it has brought, the friendships made and the good times enjoyed by as merry a group of girls as might be collected. Among the memories that every Sigma Omega will cherish are the breakfast early in the fall and early in the morning, for 1940's brand new members; a hilarious hayride, or lost on the way; the Barnwarmin' as the November Hit; Christmas and a chili supper and theater party and presents for all the good girls; the officers' party for the members; Cupid and the Valentine Banquet; a real old-fashioned party for the spring initiates; April's showers and a dance, complete with orchestra; and a gala climax in May's week-end trip.

To our excellent sponsors, Miss Margaret Madden and Miss Nancy Sheedy, go orchids and bells for a "swell" job. Officers for the year were: president, Isabelle Holmes; first vice-president, Elizabeth Rader; second vice-president, Mary Ruth Pittillo; secretary, Kathleen Condra; treasurer, Dorotha Harrod; and reporter, Natalie Clark.

SIGMA OMEGA

Nancy Sheedy, Sponsor
 Isabelle Holmes
 Elizabeth Sue Rader
 Kathleen Condra
 Margaret Madden, Sponsor

Dortha Harrod
 Mary Ruth Pittilo
 Natalie Clark
 Martha Fleenor
 Katherine Smelcer

Margaret Ayers
 Savel Dawson
 Lettie Joe Rankin
 Marie Mitchell
 Marie Catron

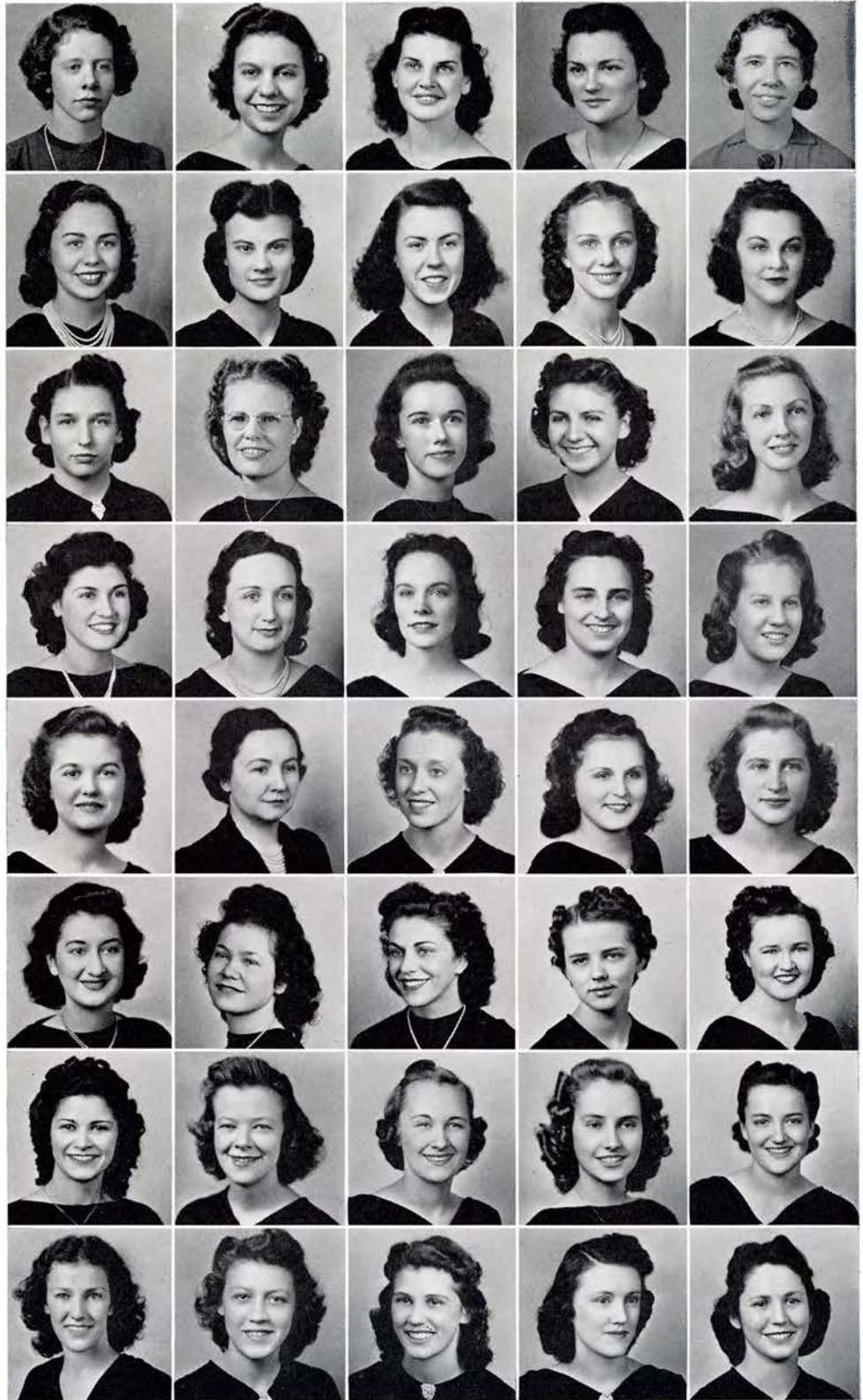
Dora Hale
 Almira Chase
 Thelma Bennett
 Hazel Ramsey
 Ruth Long

Hazel Tindell
 Bessie Fay Wilkes
 Naomi Donaldson
 Julia Chwalek
 Bonnie Brobeck

Inez Merritt
 Kathleen Taylor
 Louise Bible
 Willie Clemmer
 Henrietta Moser

Sue Huber
 Sidney Harrell
 Carolyn Martin
 Ruth Greene
 Dorothy Butler

Ora Bess Hunter
 Kearney Rogers
 Fannie Mae Clark
 Joreka Rippetoe





THE FUTURE TEACHERS OF AMERICA

OFFICERS

President
Secretary

Willie Clemmer
Elenor Keys
Treasurer

Librarian
Vice-President
Jane Hicks

Elizabeth Dyer
John Lovegrove

Sponsors: Dr. C. C. Sherrod and Dr. Frank Field

MEMBERS

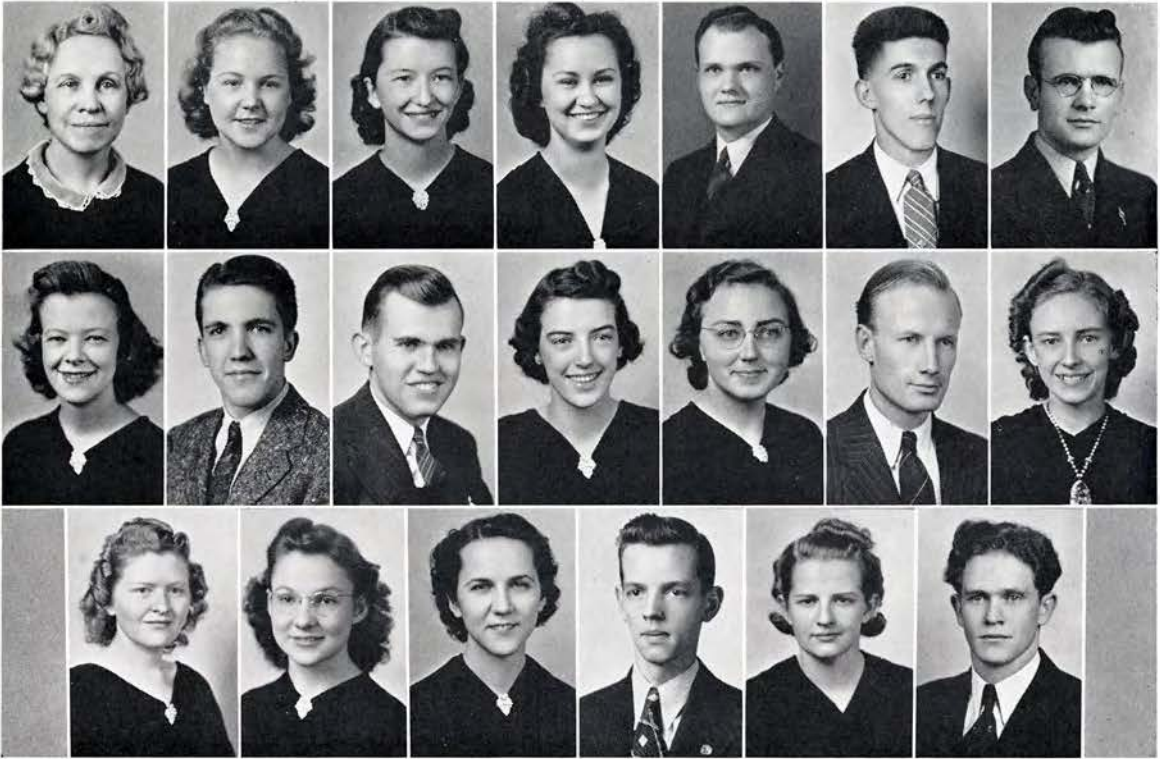
Dr. C. C. Sherrod, Sponsor
Willie Clemmer
John Lovegrove
Eleanor Keys
Dr. Frank Field, Sponsor
Jane Hicks
Elizabeth Dyer
Kathryn Lockett

Georgia Barnes
Kathleen Condra
Cowan Hood
Lydia Leonard
Lettie Joe Rankin
Walter Hendrix
Minter Haynes
Margaret Koonce

Lawton Edwards
Isabelle Holmes
Jeanne Lowry
Fred Hamblin
Elizabeth Knight
Dorothy Butler
Shirley Baumgardner
Georgia King

Lois Moody
Kearney Rogers
Willard Grubb
Frances Wheeler
Orrille Huffaker
Oswen Lee
Henrietta Moser
Scott Herrin

The W. C. Wilson Chapter of the Future Teachers of America, organized in 1938, is a branch of the National Education Association whose purpose is the study of school problems and their solutions. Members are selected on the basis of character, scholarship, leadership, and interest in the teaching profession.



INTERNATIONAL RELATIONS CLUB

OFFICERS

President	Lydia Leonard	Secretary	Alma Pugh Nance
Vice-President	Pauleene Banner	Sponsor	Maxine Mathews

MEMBERS

Maxine Mathews, Sponsor	Sidney Harrell	Thelma Goforth
Alma Pugh Nance	Scott Herrin	Eleanor Keys
Pauleene Banner	Roderick Dail	Josephine Bowers
Lydia Leonard	Elizabeth Knight	Ray Osborne
Earl Hunt	Grace White	Ann King
Kent Herrin	Cecil Whitlock	Elery Lay
Rex Depew	Kathryn Lockett	

The International Relations Club is a National Organization whose members are selected from the Junior and Senior classes on a basis of scholarship and interest in the study of international affairs.

The study for this year has been centered around Latin America with a series of programs tracing the development of the Latin American countries and their relationship to the United States.



HOME ECONOMICS CLUB

OFFICERS

President	Edith Dunbar	Reporter	Frances Shoun
Vice-President	Virginia Rader	Sec. and Treas.	Mary Martha Keller
Sponsors	Mrs. Ada H. Earnest	Miss Mary L. Gordy	

MEMBERS

Mrs. Ada Earnest, Sponsor	Doris Leonard	Amira Chase	Ethel Jett
Edith Dunbar	Margaret Henderson	Irene Masters	Loucille Elliott
Elizabeth Rader	Patton Hall	Edith Hill	Katheryn Miller
Mary Martha Keller	Nellie Grigsby	Lettie Jo Rankin	Lida Cable
Frances Shoun	Nadine Kilday	Virginia Rader	Dorothy Davis
Mary L. Gordy, Sponsor	Phyllis Wine	Anna Mae Watson	Helen Anderscn
Elizabeth Holly	Reece Winkle	Madeline Hunt	Hazle Blevins
Lovetta Keck	Hope Pearson	Billie Sousong	Ruth Long
Geneva Grindstaff	Mildred Hendricks	Charolette Swadley	Savel Dawson
Seawillow Trotter	Katheryn Garland	Hazle Tindell	Margaret Koonce
Virginia St. John	Emma Howard	Marie Catron	Pearl Hurd
	Bonnie Brobeck	Selma Morrow	Trula Cardwell

The Home Economics Club is made up of all girls who are majors or who may be planning upon majoring in Home Economics. The club attempts to further work in Home Economics and interest others in this work. Two meetings are held each month—one social and the other a business meeting.



S. T. C. BAND



S. T. C. CLUB



WEARERS OF THE "T"—1941

Bud Carpenter, John Martin, Frank Parsley, Walter Rice, Tip Williams, John Boring, Reno Burluson, George West, Lynn Johnson, John Exum, Marion Holt, Ellis Sabin, Coach Jim Mooney, Buck Hunt, Samuel Hammer, Jack Nichols, Ronda Buchanan, Carl Meeks, Garrett Mashburn, Bill Mitchell.



F O O T L I G H T

President

Walter Heeb
Sec. and Treas.

Vice-President
Louise Bacon

John Belew

Work was planned around class events the first part of the quarter and taken up at this time was the fundamentals of the stage, stage direction, projection, and diction. The second half of the quarter was devoted to make-up and applying make-up to the characters. The culmination of the year's work was the presentation of three plays:

The Mountaineer—Walter Hendrix and Lewis Epperson.

The Solution—Bill Harrison, Sutton Carter, Fred Still, Billie Card, Mava McCabe, Margaret Gray, Iva Liner.

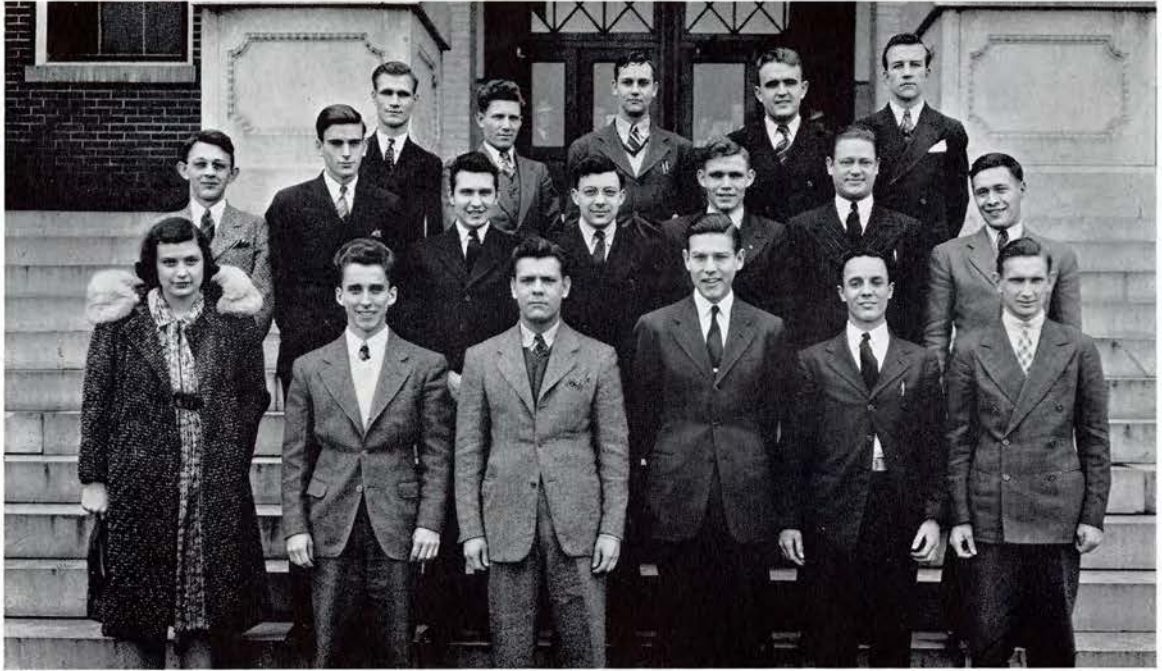
Jacob Comes Home—Tom Morris, Elery Lay, Mary Louise Meredith, Sidney Harrell, Helen Frick, Scott Herrin.

The Footlight Players sponsored the Christmas Dance.



P L A Y E R S





MEN'S CHORUS



S. T. C. CHOIR



NATIONAL YOUTH ADMINISTRATION

Back Row:

J. Donald Snook,
Sheet Metal Instructor
Fred M. Tinsley
Kenneth Whittaker
Charles W. Moore
Roy Smith
Emerson L. Sharp
William H. Tanner
Earl Goss
Russell L. Dagley
William Hill
Edward C. Murray
William P. Cary
Terrell J. Ponders

Hugh Rogers
Bertran H. Shipley
Wilbur A. Bond,
Woodwork Instructor
Middle Row:
Dale S. Bowman
Sidney Hodges
Willard Lee
Ralph Price
Arnold Stooksbury
Roland Smith
John C. Pappas
Clay L. Padgett
Clarence Stooksbury
Edward Elmore

Ed Long
Front Row:
Albert Legg
James T. Hurst
William Jackson, Jr.
Jay Harville
James Irwin
Woodward Shell
Jack Dudley
Loyd Tarwater
Hobert Coffman
Estel Manis
Edward Greene
Paul Curtis
Mitchell Curtis





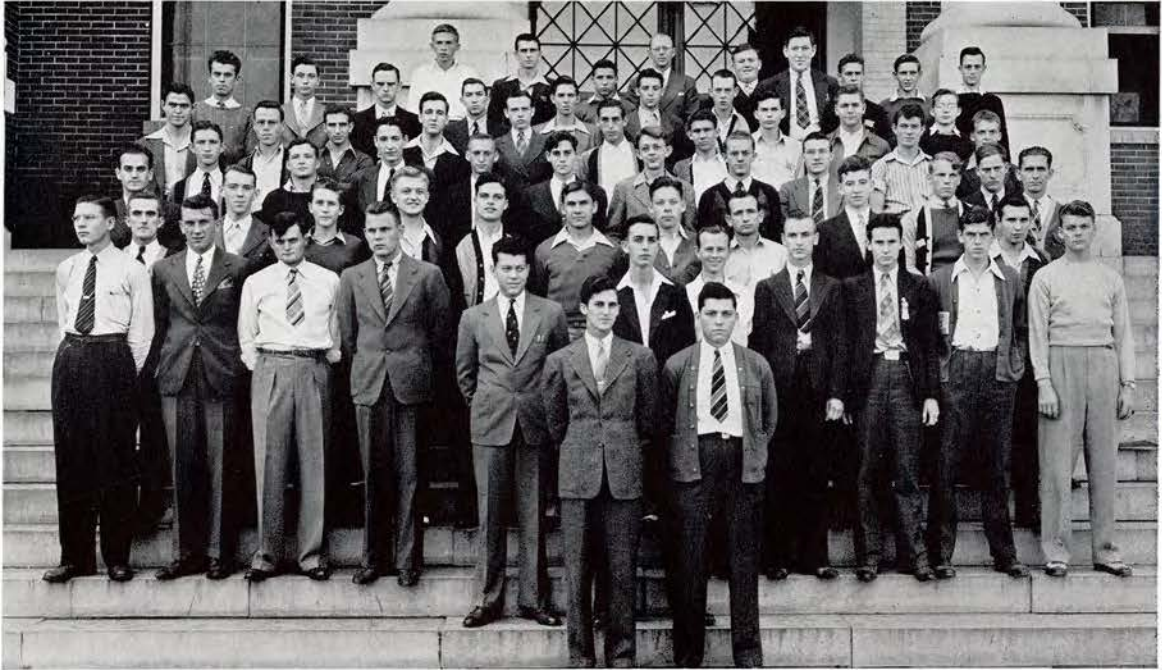
Y. W. C. A.

OFFICERS

President	Thelma Goforth	Assistant Business Manager	
1st Vice-President	Kathleen Condra		Juanita Millsaps
2nd Vice-President	Saval Dawson	Reporter	Billie Card
Secretary	Isabelle Holmes	Pianists	Lydia Leonard
Treasurer and Business Manager			Nellie Grigsby
	Elizabeth Rader		Margaret Ayers

Cabinet Members: All the above officers and the following: Dorothy Butler, Dorothe Harrod, Ora Bess Hunter, Virginia Rader.

The Young Women's Christian Association is composed of all young women living in Carter Hall. This organization aims to promote the spirit of Christ on the campus of State Teachers College. In addition, at Christmas the members entertain a large number of underprivileged children with a party and gifts, thus remembering Him who said "Inasmuch as you did it unto the least of these you have done it unto me." The Y. W. C. A. also furnishes the daily paper and a large number of the best magazines for the girls in Carter Hall and continually adds very valuable improvements to this dormitory.



THE PESTALOZZIANS

OFFICERS

President	George West	Sec.-Treas.	Garret Mashburn
Vice-President	Luther Crawford	Sponsors	Dr. and Mrs. L. M. Fraley

The Pestalozzian Society is composed of all men who reside in the Ritter Hall. This "happy family" aims for cooperation, fraternity, and a more pleasant college life for all.



Left to right: Ted Norton, John Barron, Hansel Byrd, Instructor Mat Brown, Lewis Jones, Paul Scott, Harold Slagle. Not in the picture: Bill Hart, Hunter Galloway, Harry Stallard and Ground Instructor Thomas Field.

CIVILIAN PILOTS



Ruth May and Ann King
Waco U. P. F.—7 Trainer



FEATURES



EARL HUNT JR.



LETTIE JO RANKIN



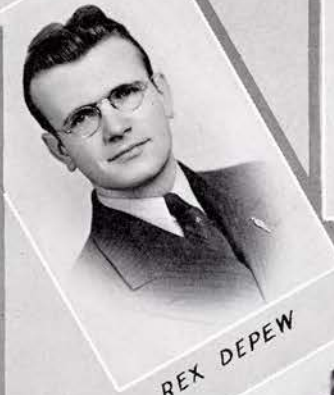
JOHN LOVEGROVE



KATHLEEN CONDRA



WINIFRED BLACK



REX DEPEU



ANN KING



KENT HERRIN



ISABELL HOLMES



THOMAS MORRIS



PAULEENE BANNER

State Teachers College Representatives
Who's Who
of American Colleges and Universities



MARY NELL WOMACK



ORRILLE HUFFAKER



ANNA BELLE SCOTT



EDITH DUNBAR

*State Teachers College
Beauties*

selected by

J. E. Jones



MARY RUTH PITILLO

Compliments of
American Bemberg
and
North American Rayon Corp.

Compliments of
HAMILTON
National Bank

of
JOHNSON CITY

Compliments of
Johnson City Steam
Laundry

JOHNSON CITY - TENNESSEE

Compliments of
MECCA RESTAURANT

"We Never Close"

PATY LUMBER COMPANY
Everything to Build Anything.
Johnson City, Tennessee

INDUSTRIAL LOAN & FINANCE CORP.
Loan Based on Character,
Plus Earning Power
325½ Main Street
Johnson City, Tennessee

HOME LOANS AND SAVINGS
FIRST FEDERAL SAVINGS AND LOAN
ASSOCIATION OF JOHNSON CITY
John Sevier Hotel Building



Compliments of

Happy Valley Memorial Park

ELIZABETHTON HIGHWAY — JOHNSON CITY

Telephones:

JOHNSON CITY 221

PARK 1797-W

MOST BEAUTIFUL BURIAL PARK IN EAST TENNESSEE

PERPETUAL CARE

BURIAL ESTATES, MAUSOLEUM SITES AND ALL TYPE BURIAL SPACES

Prices Very Reasonable

NUNN - BUSH SHOES

DOBBS HATS

HANNAH'S

FOR GOOD CLOTHES

ARROW SHIRTS

VARSITY TOWN CLOTHES

Compliments of

**STERCHI BROS.
STORES, INC.**

222-226 E. MAIN STREET

JOHNSON CITY - TENNESSEE

HEATING

STOKERS

AIR CONDITIONING

FLOOR AND WALL TILE

MODERN METAL KITCHENS

RESIDENTIAL, INSTITUTIONAL

AND

COMMERCIAL EQUIPMENT

The Lancaster Company

JOHNSON CITY, TENNESSEE

PHONE 5195

ALWAYS STOP AT
DIXIE BARBECUE

Johnson City, Tennessee

"Home of Delicious Sandwiches—

Meeting Place of All College Boys and Girls"

Compliments of

Smythe Electric Co.

Johnson City - - - Tennessee

Get Your Flowers From

**Gunnar Teilmann
& Son**

"JOHNSON CITY'S LEADING
FLORISTS"

318 E. Main Street

Phone 511

Compliments of

**SEARS ROEBUCK
& COMPANY**

"SHOP AT SEARS AND SAVE"

Phone 5230

Johnson City - - - Tennessee

**Modernize
your home
with GAS**



KISER FUNERAL HOME

Johnson City—Phone 5200

Greeneville—Phone 22

Agents—Southern Mutual Benefit Association
Knoxville, Tennessee

Operating—Kiser Funeral Service Association

So refreshing
with lunch



FREE SERVICE TIRE COMPANY

GOODYEAR TIRES
and
ESSO PRODUCTS
HOME OF DELCO RADIOS

518 — Phones — 12

Johnson City Transit Co., Inc.

The Buses Brought The

5 Cent Fare

Ride With Us and Keep The

5 Cent Fare

Compliments of

Johnson City Automobile Dealers

AUTO RENEWAL
GRISSOM-GALESPIE MOTOR CO.
H. & H. AUTO CO.
DEAKINS-MOORE MOTOR CO.
FREEMAN MOTOR CO.
HILL-SUMMERS CHEVROLET CO., INC.
RANGE MOTORS, INC.
TENNESSEE MOTOR CO.
JOHNSON CITY TRUCK &
IMPLEMENT CO.
C. I. T. CORPORATION
GUMP INVESTMENT CO.

The Roxy

WHERE THE SERVICE AND FOOD IS DELUXE

SODA FOUNTAIN

BAR-BEE-Q SANDWICHES

Compliments of

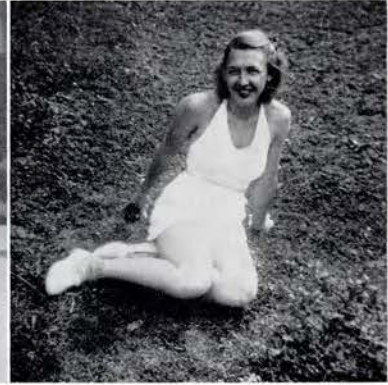
Wofford Brothers, Inc.

GENERAL INSURANCE

Johnson City - - - Tennessee

Compliments of

**L. H. LYLE CANDY
CO.**



Compliments of

C. L. DeBord Mills

Manufacturers of
WHITE DOT FLOUR

Johnson City - - - Tennessee



The most comfortable and economical
transportation between points in East
Tennessee and the Carolinas.

Queen City Coach Co.

Compliments of

CARTER COUNTY BANK

Elizabethton, Tennessee

"You will find us friendly"

Member of Federal Deposit Insurance
Corporation

BOND'S REPAIR SHOP

116 South Boone Street

Phone 1110-L

Walter Bond, Mgr.

Johnson City

Compliments of

TUNNEL'S STUDIO

Portrait Work

Kodak Prints

244½ E. Main

Phone 657-J

It's a Family Affair



You're Most Likely To Find It At KING'S

We invite you . . . to test for yourself this quotation that comes from the lips of many a smart "Teacher" . . . whether your want is a high fashion or one of the minor everyday necessities of life.

King's

East Tennessee's Most Complete
Department Store

"Where Those Who Know Buy Their Clothes"

Compliments of

THE SEVIER THEATER

"Where Everybody Goes"

Johnson City's Home Owned Theater

BOWLING

BILLIARDS

Johnson City Recreation Center

106-8 Spring Street

Where All Good Sports Get Together

Compliments of

WHITE CITY LAUNDRY

Johnson City, Tennessee

Compliments of

JENNINGS CANDY CO.

Johnson City, Tennessee

DOSSER'S

HEADQUARTERS

For

GRADUATION

GIFTS

Compliments of

Johnson City Foundry and Machine Company

Gray Iron and Alloy
Iron Castings Structural Steel

Miscellaneous and
Ornamental Iron Work
Special Machine Work

Johnson City - - - Tennessee



Compliments of

SCOTT'S GROCERY

The Students Store

Phone 568

Compliments

JOHN SEVIER HOTEL

One of East Tennessee's Leading Hotels

EXCELLENT COFFEE SHOP

M. T. McArthur, Manager

Compliments of

White Star Mill

USE WHITE STAR FLOUR

Phone 1780

"Success every time"

We Are Proud of Teachers College
Proud, too, of the Fact That We Have
Been Jewelers in Johnson City for
55 Years.

BECKNER'S

DIAMONDS WATCHES JEWELRY

RITZ BEAUTY SHOPPE

205 East Watauga

Phone 2258

LYLE FURNITURE STORE

KELVINATOR APPLIANCES

ZENITH RADIOS

COPPER CLAD RANGES

Phone 271

123-125 Spring St.

Johnson City

Compliments of

FIRESTONE AUTO SUPPLY AND SERVICE

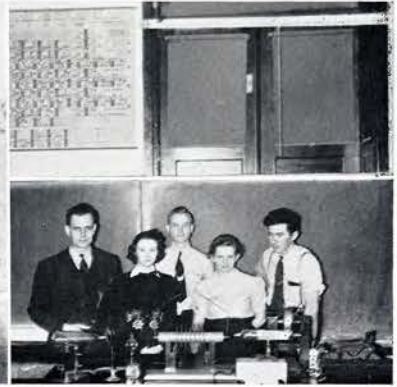
Firestone Portable and Midget Radios

\$1.00 Weekly

Roan at King St.

Phone 5250





Congratulations Seniors

Pet Dairy

Empire Furniture Corporation

Manufacturers of

DINING — BED — AND LIVING
ROOM FURNITURE

Johnson City, Tennessee

The Sevier Shop

CANDY - SODA - CIGARS

John Sevier Hotel

PHONE 5114

FREE DELIVERY

H. E. HART

The Shop of Beautiful Gifts

Genuine

"Orange Blossom"

ENGAGEMENT AND WEDDING RINGS
BY TRAUB

Ask for your copy of "Orange Blossoms," our lovely Bride's book

214 Main St. Johnson City, Tenn.

Compliments of

Parks-Belk Company

Johnson City, Tennessee

Office Appliance Co., Inc.

ROYAL TYPEWRITERS
SALES — SERVICE — RENTALS
SUPPLIES

405 S. Roan Street

Phone 107

Compliments of

SIMMONS' DAIRY

Johnson City, Tennessee

"It's worth trying"



3 Good Times
To Enjoy Life
More
At 10 - 2
and 4

Compliments of

IRA A. WATSON CO.

Johnson City, Tennessee

Compliments of

DIVISION SERVICE STATION

Ike Linville, Proprietor

Phone 242

Compliments of

ALLEN CLEANERS

Phone 902

CLINCHFIELD DRUG CO.

"Only the Best"

Erwin, Tenn.

Phone 7

VANITY BEAUTY SHOP

We Specialize in Permanent Waving,
Hair-cutting and Finger Waving
Elizabethton, Tenn. Phone 613

Compliments of

I. & P. GROCERY

The Independent and Profitable Store
Cold Meats, Groceries and Vegetables
126 Spring St. Johnson City, Tenn.

Compliments of

MRS. RUTH ANDREWS

Floral Designs — Pot Plants — Corsages
Johnson City 302 S. Roan St.

Compliments of

SAM S. FAIN

WILLIS PRODUCE COMPANY

Eggs and Poultry
Phone 85 122 E. King Street

SECURITY FEED AND SEED CO.

Johnson City, Tenn.
Phone 5254

Compliments of
A. R. BROWN AND CO.
Erwin, Tennessee

GOLDSTEIN'S
Ready to Wear — Millinery
212 E. Main Street
Johnson City, Tennessee

Compliments of
WATAUGA CHEVROLET COMPANY
Elizabethton, Tennessee

Compliments of
BURGIE'S DRUG STORE
In Business 44 Years
Elizabethton, Tennessee



TEXAS STUDIO AND GIFT SHOP

Elizabethton, Tennessee
Phone 256-W
HIGH GRADE PORTRAITS AND KODAK
FINISHING

Compliments of
THE CHARLES STORE
308 and 310 E. Main Street
Johnson City, Tennessee

Compliments of
AUTO SERVICE CO.
HUDSON
Elizabethton, Tennessee

LYLE BROS. SERVICE STATION

1501 West Walnut Street
Phone 212-J
Johnson City, Tennessee

Around
the corner
from anywhere



Dinty Moore's Cafe

A FIRST CLASS PLACE TO DINE

247 Main St. Johnson City

P. M. Moore, Proprietor

Complete Outfitters of All Sports

LONDON'S

HARDWARE

PAINT

SPORTING GOODS

THE CHOCOLATE BAR

"Uncle Arthur's Place"

Sodas - Lunch - Music - Magazines

A Good Place to Meet Your Friends

THE SHAMROCK

"A Good Drug Store"

Sandwiches - Drinks - Candies

Corner Buffalo & Walnut Phone 5184

Compliments of

ZIMMERMAN NEWS STAND

Johnson City, Tennessee

GOLDSTEIN'S BEAUTY SHOPPE

Mrs. R. W. Adams, Prop.

Permanents \$1.75 - \$10.00

Phone 267-L Johnson City, Tenn.

Compliments of

J. R. BURLESON

CONTRACTOR AND BUILDER

Phone 429 or 1288-W

Compliments of

S. S. PRESTON

Stokol Stokers

Phone 429 or 244

G. E. TREADWAY & SON

Farm Machinery — Garden and Field
Seeds — Tuxedo Feeds and VC
Fertilizer

Phone 439

Johnson City - - - Tennessee

We are proud to have taken the pictures
for this publication.

Charley Cargille Studio

Phone 122

122½ E. Main St.

Johnson City, Tennessee



EAST TENNESSEE STATE UNIVERSITY



3 6302 0073 7695 5

EAST TENNESSEE STATE UNIVERSITY



3 6302 0073 7695 5