

East Tennessee State University

## Digital Commons @ East Tennessee State University

---

ETSU Yearbooks

University Archives

---

1940

### The Buccaneer (1940)

East Tennessee State University

Follow this and additional works at: <https://dc.etsu.edu/yearbooks>



Part of the [Higher Education Commons](#)

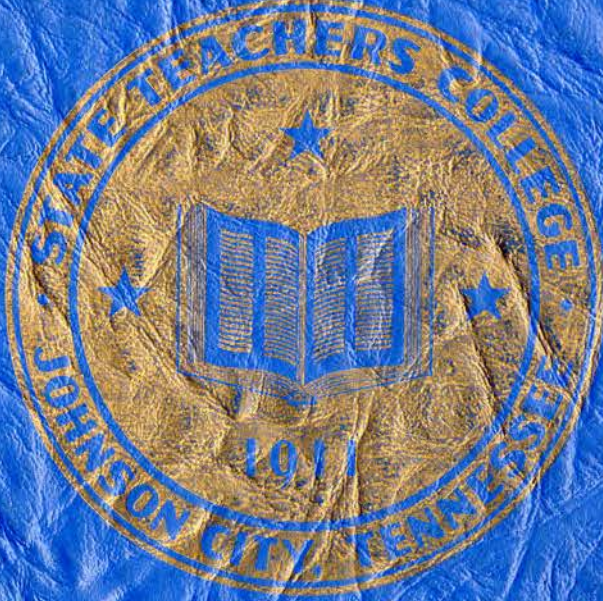
---

#### Recommended Citation

*The Buccaneer (1940)*, Archives of Appalachia, East Tennessee State University  
<https://dc.etsu.edu/yearbooks/23>

This Book is brought to you for free and open access by the University Archives at Digital Commons @ East Tennessee State University. It has been accepted for inclusion in ETSU Yearbooks by an authorized administrator of Digital Commons @ East Tennessee State University. For more information, please contact [digilib@etsu.edu](mailto:digilib@etsu.edu).



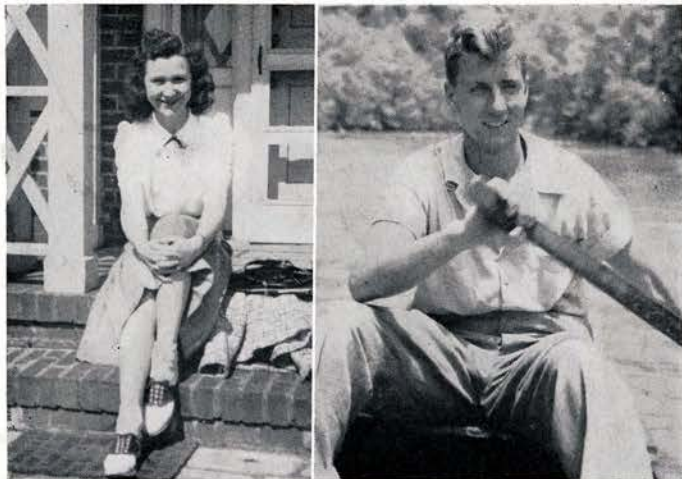








Presented to Alumni Library  
By  
Frank Field





The

1940

EDITION

OF

THE

# Bucc

MARGERITE RUMBLEY  
*editor-in-chief*

FRED THORNTON  
*business mgt.*

EAST TENNESSEE STA





# aneer

PUBLISHED  
by the  
SENIOR CLASS  
of

THE TEACHERS COLLEGE

JOHNSON CITY, TENN.



SP. CO.  
LD  
5278  
E 274  
1940  
C. B.

# FOREWORD

For you, the student body of the East Tennessee State Teachers College, and especially the Class of 1940, we have attempted in a sincere manner to record and illustrate your accomplishments and those of your school; the worth of which we may not fully appreciate today, but which will be enhanced and endeared to you by time. Our supreme desire has been that this yearbook will be for you, as it will be for those whose personalities are expressed in its composition, the keynote to indelible memories.

*The Editor*



not acc.



## *To Dean D. S. Burleson*

As Staff of the 1940 Buccaneer we take this opportunity to express thru the dedication of this volume to Dean D. S. Burleson our sincere feeling and deep appreciation for the magnanimous part he has played in helping our students mold for themselves and for others larger, happier, and more cultural lives. In the twenty-eight years of his faithful service he has taught us by deeds as well as words something more than pedagogy.

---

---



# The Administration



*Dr. C. C. Sherrod*  
PRESIDENT



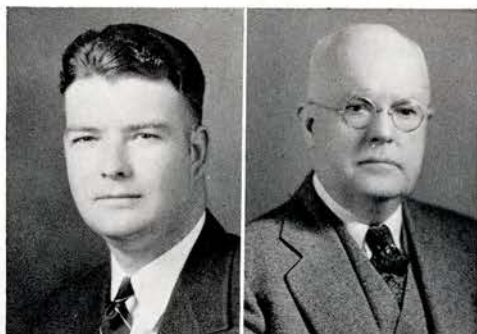
*D. S. Burleson*  
DEAN



*Dr. Frank Field*  
REGISTRAR

*John A. Clark*  
BUSINESS MANAGER

*W. L. Prince*  
BURSAR





# FACULTY

Ina K. Yoakley  
 Robert B. Cox  
 Mrs. Robert Imboden  
 W. C. Wilson  
 Mrs. Bert Hodges



Gene McMurray  
 Mary L. Gordy  
 W. F. Rogers  
 Maxine Mathews  
 D. M. Brown



Elizabeth Slocumb  
 A. A. McNeil  
 Mrs. Ada H. Earnest  
 Charles Quaintance  
 Ella Ross



W. B. Bible  
 Ruby Doak  
 Eleanor Carlock  
 Olive Taylor  
 W. W. Baker



Bernice Barnard  
 Dr. H. B. Huddle  
 T. C. Carson  
 Dr. Ruth Thomas  
 C. Hodge Mathes



Elizabeth Black  
 Thomas Chamberlain  
 Dr. L. R. Wheeler  
 Mrs. Virginia Paulling  
 Mrs. Gertrude Boren



P. W. Alexander  
 Margaret Madden  
 Mrs. Lillian Poe  
 Marie Harrison  
 Frances Terry



L. D. Wallis  
 Isabel Martin  
 Velma Cloyd  
 Florence Cole  
 W. H. Nebergall



Vera Hoover  
 Eleanor McMillen  
 Ely Butterfield  
 D. G. Stout  
 Roger Barriger





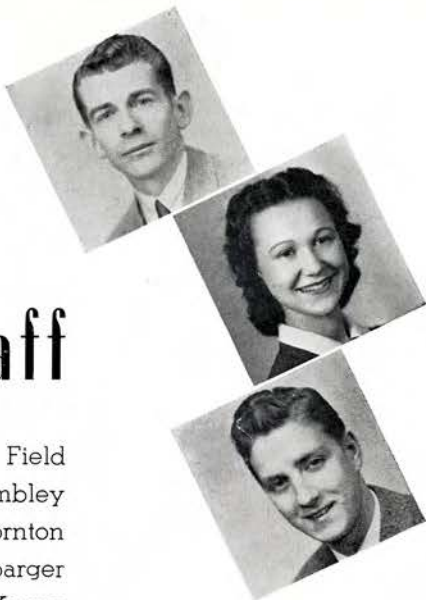
# The Student Council

The Student Council is composed of the president of the student body and student body officials functioning under him with two representatives from the upper classes and one member from the Sophomore and Freshman class. It functions to promote democratic activity among the student body and the faculty, and serves as a channel through which student suggestions and complaints regarding the school's welfare may be discussed and developed as purposeful activity.

The members for the year of 1939-40:

N. J. Sanders, president of the student body; Harry Range, vice-president; Phyllis Phlegar, secretary-treasurer of student body; Allie Bird Barton, Evelyn Denton, Wallace Boring, Harrison Marshall, Winifred Black, Walter Gilbert.





# The Buccaneer Staff

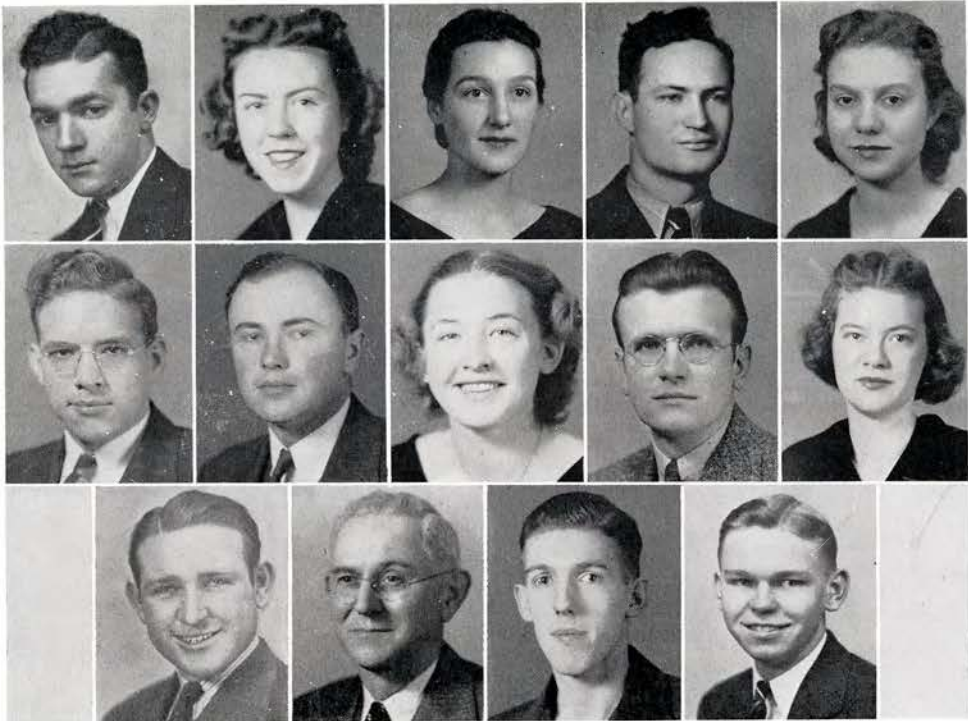
Faculty Advisor.....Dr. Frank Field  
Editor-in-Chief.....Margrite Rumbley  
Business Manager.....Fred Thornton  
Associate Editor.....James Hashbarger  
Advertising Manager.....Charles Keene  
Assistant.....Allie Bird Barton  
Photographic Editors.....Kathryn Cook, Harry Range  
Art Editor.....George Wilson  
Organizations Editors.....Phyllis Phlegar  
  Margaret Copenhaver  
Sports Editors.....Hildred Wolf, Runa White  
Snapshots Editor.....Sara Burleson  
Junior Representatives.....Minter Haynes, Editor  
  Walter Hendrix, Business Manager

To Mr. Peter Naher, editor of last year's annual, we owe many thanks for his council and consideration.





# The Tennessee Collegian



## S T A F F

Faculty Advisor.....	Dr. Frank Field
Editor-in-Chief.....	McKenzie Gross
Associate Editor.....	Kent Herrin
News Department.....	Rex Depew, Isabell Holmes
Sports Department.....	Blaine Robinette
Feature Department.....	Sara Burleson
Make-Up Department.....	Minter Haynes
Associates.....	Wanda Blevins, Walter Hendrix
Publicity Department.....	Carl Wheeler, Jack Jessee
Business Manager.....	Gunnar Teilman
Circulation Manager.....	Natalie Clark
Advertising.....	Mary E. Kinskie

Throughout our history as a school publication we have upheld three major objectives: higher scholastic standards, absolute adherence to school honor and tradition, making the public conscious of the qualities and merit of the school.



CLASSES



# Class of Nineteen - Forty

President.....Bill Belvin

Vice-President.....Runa White      Secretary.....Bonnie Myers

Student Council.....Allie Bird Barton

As we, the class of 1940, bid farewell to our school and all that composes it, both the gay and the grave, it is with a mingled spirit of joy and sadness, of exultation and depression—we enter on a new and unshielded life to attempt in a small measure what you have accomplished.

Thank you for teaching us that education is not to be found in books, but is a zealous, burning desire to learn and to convey that learning to others.





**ESTHER ANDERSON**

Chattanooga, Tennessee  
 Home Economics, English  
 Sigma Omega, '37-'40, Vice-President, '38-'40; Y. W. C. A., '37-'40; Buccaneer Staff, '40; Operetta, '37-'40; Band, '37-'40; Choir, '37-'40; Home Management House, Spring, '40.

**LILLIAN ANTHONY**

Maryville, Tennessee  
 English, Home Economics  
 Y. W. C. A., '38-'40; Home Economics Club, '39-'40; F. T. A., '39-'40; Honor Roll, Fall, '39.

**CLEO AUSTIN**

Morristown, Tennessee  
 History, English  
 Y. W. C. A., '36-'40, Secretary, '39-'40; Girls "T" Club, '40; Head of Darts, '39; Head of Croquet, '40.

**JAMES BENJAMIN BARNETT**

Erwin, Tennessee  
 Mathematics, Chemistry, Social Science, English  
 "T" Club, '39-'40; Collegian Staff, '39; Football, '36-'40.

**VIRGINIA BOWMAN**

Milligan, Tennessee  
 Transfer from Milligan College, '38  
 Home Economics, English  
 Home Economics Club, '39-'40; Home Management House, Spring, '39.

**JOYCE BRAKBILL**

Madisonville, Tennessee  
 Transfer from Maryville College, '38  
 English, Science, History  
 Sigma Omega, '39-'40; Y. W. C. A., '38-'40; Science Club, '38-'40; Operetta, '39-'40; Orchestra, '38-'40; Choir, '38-'40.

**EVA RHEA BUCKLES**

Bristol, Tennessee  
 Transfer from King College, '39  
 English, History

**SARA BURLESON**

Johnson City, Tennessee  
 Physical Education and Health, History  
 Pi Sigma, '37-'40; International Relations Club, '38-'40; Footlight Players, '38-'40, President, '39-'40; Tennessee Collegian, '38-'40; Buccaneer Staff; Who's Who, '39-'40; Head of Hiking, '39-'40; Glee Club, '37-'38; Band, '37.





**ELEANOR CARLOCK**

Johnson City, Tennessee  
Language, English  
Pi Sigma, '34-'36; International Relations Club, '36.

**EUNICE CARTER**

Greeneville, Tennessee  
Transfer from Tusculum College, '39  
Music, Social Studies, English  
Glee Club, '40; Choir, '39-'40; Honor Roll, Winter, '39.

**KATE CHANDLER**

Erwin, Tennessee  
Biology, History, English  
"T" Club, '39-'40; Science Club, '39-'40, Vice-President, '39; Honor Roll, Fall, '38, '39; Head of Baseball, '39; Head of Horseshoe, '40; T. C. Award, '38.

**HENRY CLINTON CLAIBORNE**

Lafollette, Tennessee  
Biology, Social Science  
Pestolozzian Society, '36-'40, President, '37, Treasurer, '39, '40; Tau Alpha Omega, '37-'40; Operetta, '39-'40; Glee Club, '39-'40; A-Capella Choir, '39-'40.



**HELEN CLARKE**

Hixson, Tennessee  
Home Economics, English, History  
Y. W. C. A., '36-'40; President, '40; Home Economics Club, '36-'40, President, '39-'40; F. T. A., '39-'40; Home Management House, Winter, '39.

**KATHRYN LANGFORD COOK**

Erwin, Tennessee  
Transfer from the University of Tennessee, '39  
History, Social Studies, English  
Pi Sigma, '39-'40; Y. W. C. A., '39-'40; Buccaneer Staff; Tennessee Collegian Staff, '39.

**MARGARET J. COPENHAVER**

Johnson City, Tennessee  
Transfer from Mitchell College, '38  
English, History, Art, Social Studies  
Pi Sigma, '39-'40; Buccaneer Staff; Honor Roll, Winter, '39.

**FRED CROUCH**

Boones Creek, Tennessee  
Social Science, English





**ELIZABETH ELLIOTT**

Erwin, Tennessee  
 History, English, Geography  
 Honor Roll, Spring, '36, Summer, '39.

**LOIS BRADSHAW EMMERT**

Erwin, Tennessee  
 History, English  
 International Relations Club, '39-'40; Y. W. C. A.,  
 '36-'38; A. C. E., '36-'37; Tau Alpha Omega, '36-'40;  
 Honor Roll.

**KATE FELKER**

Boyd's Creek, Tennessee  
 English, History, French  
 Y. W. C. A., '37-'40; French Club, '37-'38; Glee  
 Club, '37-'38.

**GENEVA HOWELL GARLAND**

Erwin, Tennessee  
 English, History, Social Science  
 Honor Roll, Spring, '37, '38, '39.

**NEGATHA LEE GOURLEY**

Tarpon, Virginia  
 Transfer from Milligan College  
 English, Social Science, French  
 International Relations Club, '39-'40; French Club,  
 '37-'38, Vice-President, '38-'39; A. C. E., '37-'38; Tau  
 Alpha Omega, '37-'40; Honor Roll, Winter, '36, Winter,  
 '37, Spring, '38, Fall, '39.

**PAULINE HAMMER**

Bond's Creek, Tennessee  
 Home Economics, English, Social Studies  
 Home Economics Club, '36-'40; Home Management  
 House, '39.

**JAMES F. HASHBERGER**

Rossville, Georgia  
 Transfer from Hiwassee College, '38  
 Social Studies, English  
 International Relations Club, '39; Pestalozzian,  
 '38-'40; Buccaneer Staff; Honor Roll, Fall, '38, Spring,  
 '39, Fall, '39.

**HARRY HYDER**

Limestone, Tennessee  
 Industrial Arts, Physical Education, Social Studies  
 "T" Club, '37-'40; Footlight Players, '38-'40; Basket-  
 ball, '37-'40; Baseball, '36-'40.





**CHARLES JONAS KEENE, JR.**

Erwin, Tennessee

Social Studies, Science, English  
International Relations Club, '39-'40; Pestalozzian Society, '36-'40, Treasurer, '38-'40; F. T. A., '39-'40, Treasurer, '39-'40; Buccaneer Staff; Music Award, '39; Glee Club, '36-'38; Orchestra, '38-'40, President, '39-'40; Band, '36-'40; Honor Roll, Fall, '39.

**MARY FRANCES KELLY**

Chattanooga, Tennessee

Music, English, Health  
Y. W. C. A., '36-'40; A. C. E., '38; Operetta, '38-'40; Music Award; Glee Club, '37-'40; Band, '36-'40; Miss S. T. C., '39-'40; Most Popular Girl, '38-'39.

**RUTH AILENE KING**

Johnson City, Tennessee

Music, French, English  
Music Awards for Band and Glee Club; French Club, '37-'38; Operetta, '37-'40; Band, '37-'40; Choir, '38-'40; Glee Club, '38-'40.

**DORIS KIRKPATRICK**

Jonesboro, Tennessee

Social Studies, French, English  
Sigma Omega, '36-'40; International Relations Club, '39-'40; French Club, '36-'37; Honor Roll, '38-'40.



**SHIRLEY MAE KYKER**

Johnson City, Tennessee

English, History, Geography  
Pi Sigma, '36-'40, Treasurer, '39-'40.

**WILLIAM EDWARD McCAMPBELL**

Johnson City, Tennessee

Industrial Arts, History, English  
Band, '36-'37; Tennessee Collegian, '39-'40.

**HAROLD MILLER**

Johnson City, Tennessee

Industrial Arts, Mathematics  
Orchestra, '36-'38.



**RUBY BACON MOORE**

Kingsport, Tennessee

English, History, Mathematics  
Y. W. C. A., '31-'32; Honor Roll, Summer, '39, Winter, '39.



**BONNIE MYERS**

Church Hill, Tennessee

English, French, Biology, Health  
 Y. W. C. A., '36-'40; Footlight Players, '39-'40;  
 Secretary of Senior Class, '39-'40; French Club, '40;  
 Honor Roll, Fall, '38, Fall, '39; Baptist Student, '38-'40.

**PHYLLIS PHEGAR**

Johnson City, Tennessee

English History, French  
 Secretary of Student Body, '39-'40; Pi Sigma, '37-'40,  
 Treasurer, '39; Pi Kappa Delta, '37-'40; Buccaneer Staff;  
 International Relations Club, '39-'40; F. T. A., '39-'40;  
 Who's Who in American Colleges, '40; Secretary of  
 Sophomore Class, '37; Secretary of Junior Class, '38;  
 French Club, '37-'38; Honor Roll, '36-'40.

**HARRY GARNER RANGE, JR.**

Johnson City, Tennessee

Physical Education, English, Social Science  
 Vice-President of Student Body, '39-'40; "T" Club,  
 '37-'40; President of Sophomore Class, '37; Vice-Presi-  
 dent of Junior Class, '37; Cheerleader, '36.

*Navy*

**MARY GRACE RICHIE**

Elizabethton, Tennessee

Transfer from Tusculum, '37  
 Home Economics, English, History  
 Sigma Omega, '39-'40; Home Management House,  
 '40.

**BLAINE W. ROBINETTE**

Erwin, Tennessee

Health, Physical Education, English  
 Tennis, '37-'40, Captain, '40; "T" Club, '37-'40;  
 Tennessee Collegian, '39-'40; French Club, '39; Intra-  
 mural Basketball, '38-'39; Tennis State Doubles Cham-  
 pion, '39.

*Army*

**MARGRITE L. RUMBLEY**

Johnson City, Tennessee

History, English, Social Science, Science  
 Editor-in-Chief of Buccaneer; Who's Who in Ameri-  
 can Colleges of '39-'40; International Relations Club,  
 '38-'40, President, '39-'40; Pi Kappa Delta, '37-'40;  
 Pi Sigma, '38-'40, Secretary, '39-'40; Honor Roll, Win-  
 ter, '37, Spring, '38, Spring, '39, Fall, '39, Winter, '39.



**N. J. SANDERS**

Jonesboro, Tennessee

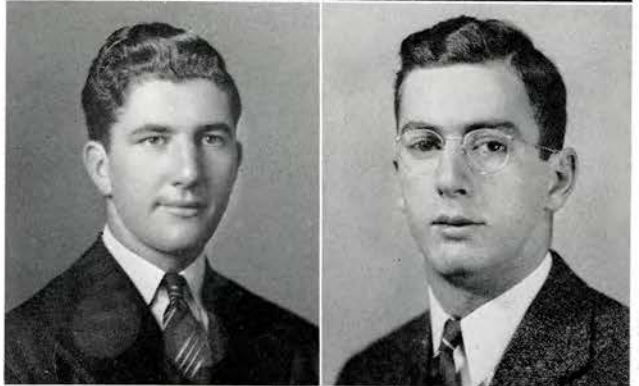
Industrial Arts, Science, English, Physical Education  
 President of Student Body, '39-'40; Captain of Foot-  
 ball, '39-'40; Who's Who of American Colleges,  
 '39-'40; Most Popular Boy of '39; Pestalozzian, '36-'40;  
 Tau Alpha Omega, '38-'40; F. T. A., '39-'40; Football,  
 '36-'40; Baseball, '38-'40.

*Army*

**JAMES FREDRICK SCOTT**

Johnson City, Tennessee

English, Industrial Arts, History  
 Track, '36.





**SIDNEY SMALLWOOD**

Jonesboro, Tennessee

English, Social Science

"T" Club, '36-'40; German Club, '36-'38; Football, '37-'38; Track, '36; Basketball, '36.

**GEORGIA MAE SOUTH**

Johnson City, Tennessee

Latin, English, History

First Honor Roll, '36-'40; International Relations Club, '38-'40, Secretary, '40; Tau Alpha Omega, '37-'40.

**UNA CELESTIA THOMAS**

Bristol, Tennessee

Transfer from Virginia Intermont College

Home Economics, English, History

Sigma Omega, '38-'40; Y. W. C. A., '38-'40; Home Economics Club, '39-'40; F. T. A., '40; Home Management House.

**FRED THORNTON, JR.**

Knoxville, Tennessee

Industrial Arts, Science

"T" Club, '38-'40, President, '40; Basketball Manager, '39; Business Manager of Buccaneer; Band, '37-'39; Footlight Players, '38-'39; Pestalozzian Society, '36-'40.



**RAYMOND THORNTON**

Newport, Tennessee

Industrial Arts, Chemistry, English

Pestalozzian Society, '36-'40; Science Club, '39-'40; Football, '36-'40; Basketball, '36-'40.

**HELEN GRACE WALKER**

Jonesboro, Tennessee

Home Economics, English, History

Y. W. C. A., '39-'40; Home Economics Club, '37-'40, Vice-President, '39-'40; Home Management House, Spring, '39; Honor Roll, Winter, '39.

**SAMUEL RUNA WHITE**

Maryville, Tennessee

Industrial Arts, Social Science, English

"T" Club, '36-'40, Vice-President, '39-'40; Pestalozzian Society, '36-'40; Tau Alpha Omega, '38-'40; F. T. A., '40; Glee Club, '36; Tennessee Collegian Staff, '38-'39; Buccaneer; Basketball, '36-'40, Captain, '40; Baseball, '37-'40.

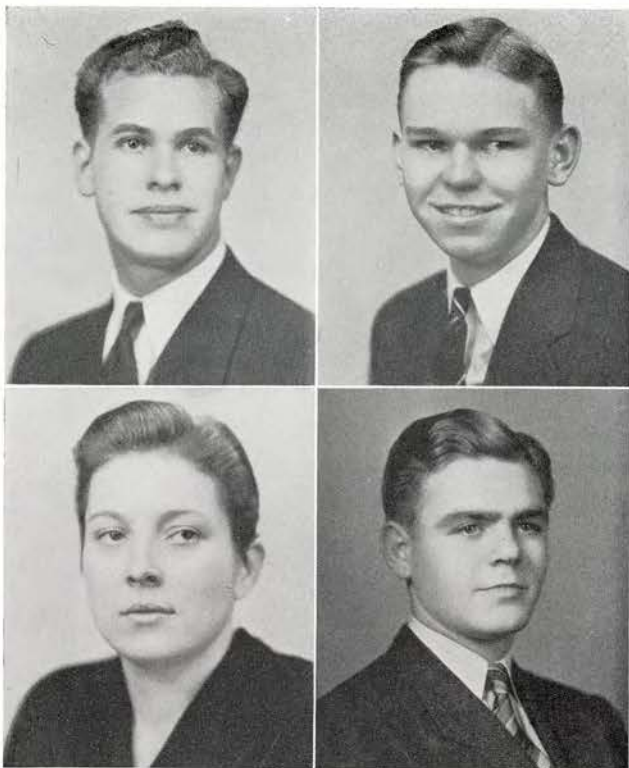


**PAUL CLAUDE WILLIAMS**

Erwin, Tennessee

History, English

"T" Club, '36-'40; F. T. A., '39-'40; President of Junior Class, '38-'39; Baseball, '36-'40; Honor Roll, Spring, '39.



**LON WINKLE**

Bean Station, Tennessee  
 Transfer from Bridgewater College, '37  
 Industrial Arts, Mathematics, English  
 Pestalozzian Society, '37-'40; Operetta, '38-'40; Music  
 Award, '40; Glee Club, '37-'40.

**GUNNAR JOHAN  
 TEILMANN, JR.**

Johnson City, Tennessee  
 Industrial Arts, English, History  
 Business Manager of Tennessee Collegian, '39-'40;  
 Pi Kappa Delta, '36-'40; Orchestra, '36-'38; Tau Alpha  
 Omega, '38-'40; Honor Roll, Fall, '36, Winter, '36,  
 Spring, Fall, Winter of '39.

*Army  
 Chaplain*

**HILDRED WOLFE**

Piney Flats, Tennessee  
 Physical Education, Health, Science, English  
 "T" Club, '39-'40; Buccaneer Staff; Head of Sports,  
 '39; Intramural Manager, '40; T C Award, '37; T  
 Sweater, '38; T Blanket, '40.

**WILLIAM W. BELVIN**

Johnson City, Tennessee  
 English, History, Social Science  
 "T" Club, '40; Footlight Players, '39-'40; Pi Kappa  
 Delta, '36-'40, President, '39-'40; Tennessee Collegian,  
 '36-; Writers Award, '38; Football, '39.

*A A F*

**GLADYS DAVIS CARDEN**

Hampton, Tennessee  
 English, Geography, Art  
 Glee Club, '37; Home Economics Club, '35-'36;  
 Art Club, '30-'38.

**FRED WINTER**

Parrottsville, Tennessee  
 English, French, History  
 "T" Club, '37-'40; Pestalozzian Society, '36-'40;  
 Baseball, '36-'40.

**ELIZABETH DOANE**

Blountville, Tennessee  
 Transfer from Sullins College '38  
 English, Music, Home Economics  
 Glee Club, '38-'40; Orchestra, '38-'40; Choir, '38-'40;  
 Y. W. C. A., '39-'40; Sigma Omega, '39-'40.

**McKENZIE GROSS**

Johnson City, Tennessee  
 History, Social Science, English  
 Honor Roll, Fall, Winter, Spring, '37-'38, Spring, '39;  
 International Relations Club, '39-'40; Pi Kappa Delta,  
 '37-'40; Tennessee Collegian, '37-'40; Editor-in-Chief  
 of Tennessee Collegian, '39-'40; Band, '37-'40; Glee  
 Club, '37-'40.



*Army*



**SANNA BARLOWE**

Johnson City, Tennessee  
Transfer from Columbia Bible College, '39  
Social Science, English

**ALLIE BIRD BARTON**

Johnson City, Tennessee  
Transfer from Virginia Intermont, '37  
English, Languages, Science  
Pi Sigma, '37-'40, President, '39-'40; Footlight Play-  
ers, '38-'40; Buccaneer Staff; Student Council Mem-  
ber, '39-'40; Science Club, '39-'40; German Club,  
'38-'39; Footlight Players, '37-'40.

**HOWARD ALLEN BOWERS**

Johnson City, Tennessee  
Transfer from West Point Preparatory School  
Physical Education, English, History  
"T" Club, '37-'40; Tennessee Collegian, '39-'40;  
Football, '37-'40; Basketball, '37-'40, Captain, '39-'40;  
Baseball, '37-'40; Tennis, '40.

**W. B. BROWN**

Johnson City, Tennessee  
Physical Science, Mathematics, English



**THOMAS CABLE, JR.**

Butler, Tennessee  
Transfer from Carson Newman College, '38  
Social Studies, Mathematics, English

**L. J. CARSON**

Ridge Spring, South Carolina  
Industrial Arts, English

**KATHERYN CAMPBELL  
CULBERTSON**

Johnson City, Tennessee  
English, Latin, History, French  
Glee Club, '39-'40; Band, '39.

**MARGARET LENORA DAVIS**

Wartburg, Tennessee  
Mathematics, English, History  
Footlight Players, '38-'40; Tau Alpha Omega, '38-'40;  
Treasure Trove, '38.





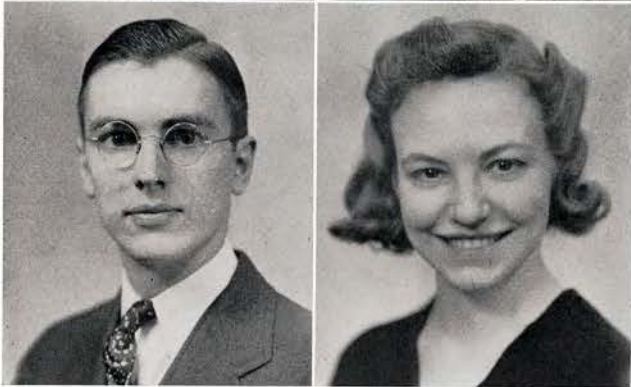
**HELENA JEWELL DUNBAR**

Erwin, Tennessee  
 History, English, Biology  
 Honor Roll, Winter, '36, Spring, '37, Winter, '37,  
 Spring, '38, Fall, '38, Summer, '38.

**BUELL FEATHERS**

Watauga, Tennessee  
 Mathematics, Physical Science, History  
 French Club, '38-'39; Band, '37-'38.

*Amey R. T.*



**HUGH ECKEL FULLER**

Speers Ferry, Virginia  
 History, English, Social Science  
 Pestalozzian Society, '37-'40; Rural Life Club, '37-'38;  
 Honor Roll, Fall and Spring, '36-'37, Spring, '38,  
 Spring, Summer and Fall, '39.

**MADGE McCLAIN GULLEY**

Johnson City, Tennessee  
 Home Economics, Social Science

**EVELYN HUNT HARMON**

Whitesburg, Tennessee  
 Latin, English, Biology  
 Honor Roll, Fall and Spring, '37, '38, Summer, '39,  
 Fall and Winter, '39.

**WILLIAM HENRY HARTLEY**

Johnson City, Tennessee  
 English, History, Science, French  
 Pi Kappa Delta, '37-'40; Operetta, '38-'40; Music  
 Award, '39; Glee Club, '38-'40; Acapella Choir,  
 '39-'40; Honor Roll.

**ELIZABETH HILL**

Knoxville, Tennessee  
 Transfer from University of Tennessee, '39  
 Home Economics, Music, Social Science  
 Footlight Players, '39-'40; Home Economics Club,  
 '39-'40; Glee Club, '39-'40; Home Management House.

**MELVILLE KELLY**

Chattanooga, Tennessee  
 Music, Science  
 Band, '36-'40; Glee Club, '36-'40, President, '39-'40;  
 Orchestra, '36-'40, Assistant Director, '39-'40.



*G. H. H.*

*Melville Kelly*



**EDITH ELIZABETH KEYS**

Limestone, Tennessee

Home Economics, English  
Home Economics Club, '36-'40, Secretary, '40; All  
Famous Volley Ball, '38, '39; All Famous Baseball, '39;  
T. C. Award, '39; Honor Roll, Fall, '37, '38, '39, Winter,  
'38, Spring, '37, '39.

**ELIZABETH MASSENGILL**

Bluff City, Tennessee

Home Economics, English, Social Science  
Sigma Omega, '37-'40; Y. W. C. A., '37-'40; "T"  
Club, '39-'40; Operetta, '38; Home Economics Club,  
'36-'40; T C Award, '38; T Sweater, '39; Home Man-  
agement House, Spring, '39.

*Army*  
**PAUL MASSENGILL**

White Pine, Tennessee

Industrial Art, History  
Football, '37, '38; F. T. A., '39-'40; Pestalozzian So-  
ciety, '36-'40.

*Army*  
**JAMES NELMS**

Surgoinsville, Tennessee

Science, English, History



**ALICE QUEENER**

Knoxville, Tennessee

Transfer from Bob Jones College  
Music, English

Y. W. C. A., '37-'40, President, '38; Operetta, '39;  
Glee Club, '38-'39; Baptist Student, Vice-President,  
'39-'40.

**IRENE RHEA**

Limestone, Tennessee

Transfer from Tusculum College  
Home Economics, English

Home Economics Club, '37-'40; Home Management  
House, '40; Y. W. C. A.

**MARILYNN VANDERSTEEN** *D.S.*

Johnson City, Tennessee

Home Economics, English, Chemistry  
Footlight Players, '38-'40; Home Economics Club,  
'36-'40, Secretary, '39; Tau Alpha Omega, '39-'40;  
Glee Club, '36-'40.

*Army*  
**ROY WADE**

Johnson City, Tennessee

Mathematics, Industrial Arts, Physical Science



**KATHERINE HAMILTON**

Bluff City, Tennessee  
English, History

**VIRGINIA A. HOLT**

Clinton, Tennessee  
Transfer from University of Tennessee  
English, Geography

**JOSEPHINE JAYNES**

Greeneville, Tennessee  
Transfer from Tusculum College  
English, Language

**BESSIE LAW**

Townsend, Tennessee  
Transfer from Maryville College  
English, Social Studies

**EVERETTE LOWE**

Habersham, Tennessee  
Transfer from Hiwassee College  
English, History

Honor Roll, '39-'40; International Relations Club,  
'39-'40.

**MABLE FRANCES WALLIN**

Johnson City, Tennessee

Home Economics, English  
Pi Sigma, '37-'40, Vice-President, '39-'40; Y. W. C.  
A., '39-'40; Footlight Players, '37-'40, President, '37-'38;  
Home Economics Club, '38-'40; All-Round Girl of '39;  
Cheerleader, '37-'40.

**GORDON EDWARD WHEELER**

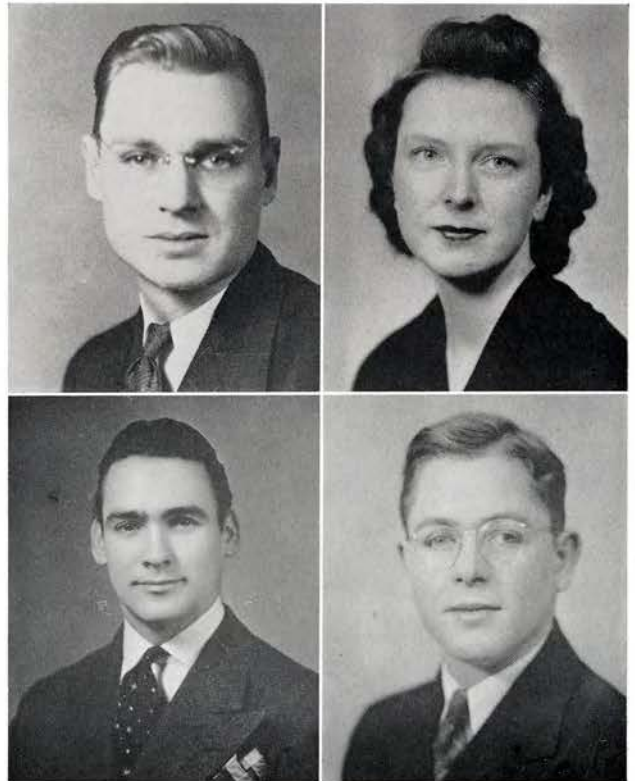
Chattanooga, Tennessee

Social Science, English, Music  
Pestalozzian Society, '36-'40; Music Award, '39;  
Glee Club, '36-'40; Orchestra, '36-'38; Band, '36-'38.

**GEORGE WILSON**

Johnson City, Tennessee

Industrial Arts, History  
Tau Alpha Omega, '39-'40; Art Editor for Buccaneer.





**VIRGINIA AYERS**

Midway, Tennessee  
Transfer from Milligan College  
English, Social Science

**ADEN CHILDRESS**

Jonesboro, Tennessee  
English, History, Social Science

**MILDRED McCULLEY**

Jonesboro, Tennessee  
English, Home Economics, Social Science

**IRENE STARNES**

Mosheim, Tennessee  
English, History



**ROBERT S. LACEY, JR.**

Hopson, Tennessee  
Chemistry, Mathematics  
President of Sophomore Class, '34; Tau Alpha  
Omega, '37; Track, '33-'34; Basketball, '33-'34; Honor  
Roll, Spring, '34.

**MAUDE JONES**

Jonesboro, Tennessee  
English, Social Science, Music

**ROSE WHITEHEAD MORTON**

Hampton, Tennessee  
English, Home Economics

**DOROTHY ELIZABETH WOOD**

Johnson City, Tennessee  
English, Home Economics  
Pi Sigma, '38-'40; Home Economics Club, '36-'40.



**DAN LAWS**  
 Elizabethton, Tennessee  
 Transfer from Carson Newman College, '39  
 Social Science, English  
 "T" Club, '39-'40.

**NORMA LAWS**  
 Elizabethton, Tennessee  
 Transfer from Carson Newman College  
 Home Economics, English



**ANNETTE HILLIARD**  
 Cleveland, Tennessee  
 Transfer from Tennessee Wesleyan College  
 English, Home Economics  
 Y. W. C. A., '37-'40; Home Economics Club, '37-'40;  
 Glee Club, '37-'40.

**FUSON RAY**  
 Harrogate, Tennessee  
 Transfer from Lincoln Memorial University  
 Biology, Social Science

**T. B. McCULLYE**  
 Kingsport, Tennessee  
 History, English  
 Rural Life Club, '39; Pestalozzian Society, '29-'30;  
 Honor Roll, Spring, '30.

*Army*

**MARIE FLEENOR**  
 Telford, Tennessee  
 Transfer from Tusculum College  
 Home Economics, Social Science

**FRANCES GREGG**  
 Friendsville, Tennessee  
 Transfer from Guilford College  
 English, Health and Physical Education  
 Glee Club, '36; All Star Baseball, '36.

**LAWRENCE HARLESS**  
 Corryton, Tennessee  
 Geography, History, English







**BOYD S. RAY**  
Mountain City, Tennessee  
Transfer from Milligan College, '39  
Social Science, History, English



**ALICE HUTSON**  
Cleveland, Tennessee  
Transfer from Tennessee Polytechnic Institute  
English, History, Home Economics



**HELEN CUMMINS**  
Crossville, Tennessee  
Transfer from Tennessee Wesleyan  
English, Social Science



**ANNA ELIZABETH FLEEMAN**  
Cleveland, Tennessee  
Transfer from Bob Jones College  
English, History, Biology

*Pictures Not Available*

**MRS. A. E. WALKER**  
Cleveland, Tennessee  
Social Science, Home Economics

**SAM McCONNELL**  
Chattanooga, Tennessee  
Transfer from Hiwassee  
Mathematics, History

**HANNAH WORLEY  
MASENGILL**  
Bluff City, Tennessee  
English, Physical Education  
Pi Sigma, '32-'34; T C Award, "T" Award, '33-'34;  
Glee Club, '33-'34.

# Class of Nineteen Forty-One

President.....Kent Herrin

Vice-President.....John Lovegrove      Secretary.....Isabell Holmes

Student Council.....Evelyn Denton      Wallace Boring

The Junior Class has taken an active part in the school activities of the year. The class sponsored the Junior Christmas dance during the winter quarter, and the traditional Senior picnic during the spring quarter. They collaborated with the Seniors in the annual Junior-Senior prom in April.

They are the class to watch in 1941.







✓ Helen Anderson  
 ✓ Lenore Anderson  
 ✓ Thelma Bennett  
 Nell June Barrett  
 ✓ Eugene Bogart

Ruth Bowers  
 ✓ Hansel Byrd  
 Edythe Cates  
 ✓ Eliza Compton  
 Varnell Courtner

✓ Katherine Condra  
 ✓ Luther Crawford  
 ✓ Savel Dawson  
 ✓ Rodrick Dale  
 ✓ Edison Day

✓ Naomi Donaldson  
 ✓ Ross Drake  
 Evelyn Denton  
 ✓ Edith Dunbar  
 ✓ Calvin Dunbar

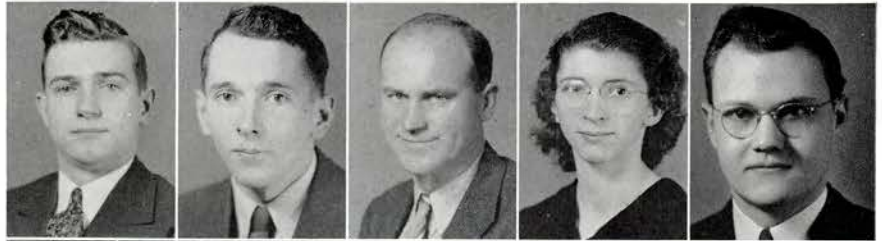
✓ Laughton Edwards  
 ✓ Ethridge Green  
 ✓ Ruth Green  
 ✓ Geneva Grindstaff  
 ✓ Thelma Goforth

✓ Betty Hagar  
 ✓ Patton Hall  
 ✓ Margaret Hammer  
 ✓ Martha Lyle Hancock  
 Billie Hawkins

✓ Minter Haynes  
 ✓ Margaret Henderson  
 ✓ Walter Hendrix  
 ✓ Kent Herrin  
 ✓ Isabell Holmes

✓ Cowan Hood

- ✓ Manley Howard
- Claude Hughes
- Marie Hunt
- ✓ Earl Hunt



Ann Jennings

- Mary Ann Kyker
- Mamie C. Killian
- ✓ Margaret Koonce
- Mildred Lee



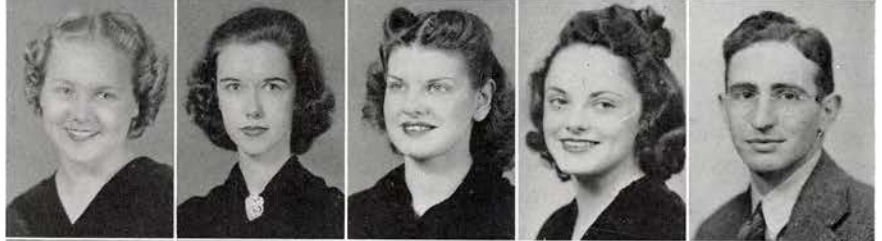
✓ Lydia Leonard

- Tom Lyle
- May Matherly
- Catherine McGuffin
- Kathryn Mottern



✓ Alma Pugh

- ✓ Lettie Jo Rankin
- Elizabeth Rader
- Annabell Scott
- ✓ Harold Slagle



✓ Virginia St. John

- Flora Welborne
- Evelyn Taylor
- Kay Taylor
- Anna Thomas



✓ Fred Woods

Cora Lee Turner





# Class of Nineteen Forty-Two

President  
ELLIS SABIN

Vice President  
CHARLES NEASE

Secretary and  
Student Council Member  
WINFRED BLACK







# Class of Nineteen Forty-Three

President  
JOHN EXUM

Vice President  
DAN ZOERB

Secretary  
JOSEPHINE COOLEY

Student Council Member  
WALTER GILBERT







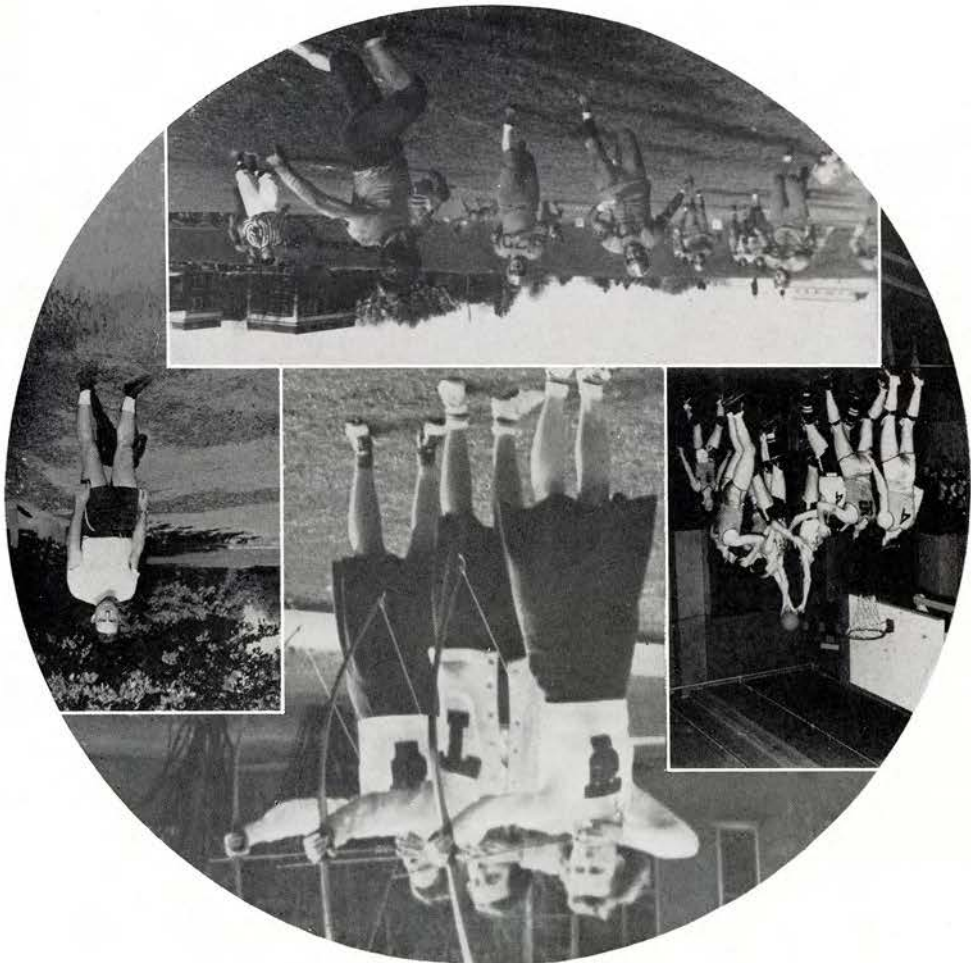


Left to Right: Cox in his Class; Cheer Leaders; "B" Squad; "Blue Tea Pot"; Birthday Dinner; Drum Majoretts; Kyker and Hunt; Smallwood, Herrin, Cornett; Cook, Benett, Hoover, Wallin, Harrell; "Comin' Around The Mountin"; Hiking Group; I. R. C. Group; Sadie Hawkins Dance; Honor Banquet; Sadie Hawkins Chase; Guess Who!; Shount and Her Friends; Guess Who!





# ATHLETICS





# YEAH! TEAM!



Although failing to live up to pre-season prognostications, this year's football team gave a very favorable account of itself. Handicapped and riddled somewhat by frequent injuries, the team reached its peak with a decisive victory over Maryville.

Against conference competition, this year's team gained an even break. Victories were scored over Tusculum, Maryville, and Cumberland, while contests were dropped to King, Carson Newman, and Milligan.

Prospects for next season are favorable, with several lettermen returning for service.

Charles Fleming and N. J. Sanders were co-captains of this year's squad.



## Coach J. G. McMurray

Completing his eighth year at the helm of the Buccaneer athletic teams, Coach McMurray again presented the school with teams which made a favorable showing in the Smoky Mountain Conference.

Although no championships were won, too much cannot be said of the sportsmanlike manner in which Coach McMurray conducted his teams and the influence which he portrayed to the boys, under his guidance. He is also respected wherever he goes for the manner in which he takes his losses along with the wins.

Coach McMurray is one of the few coaches of the country to hold a doctor's degree, and is one of the best informed Physical Educationalists in the South.

## CHEER LEADERS



Kathryn Pye

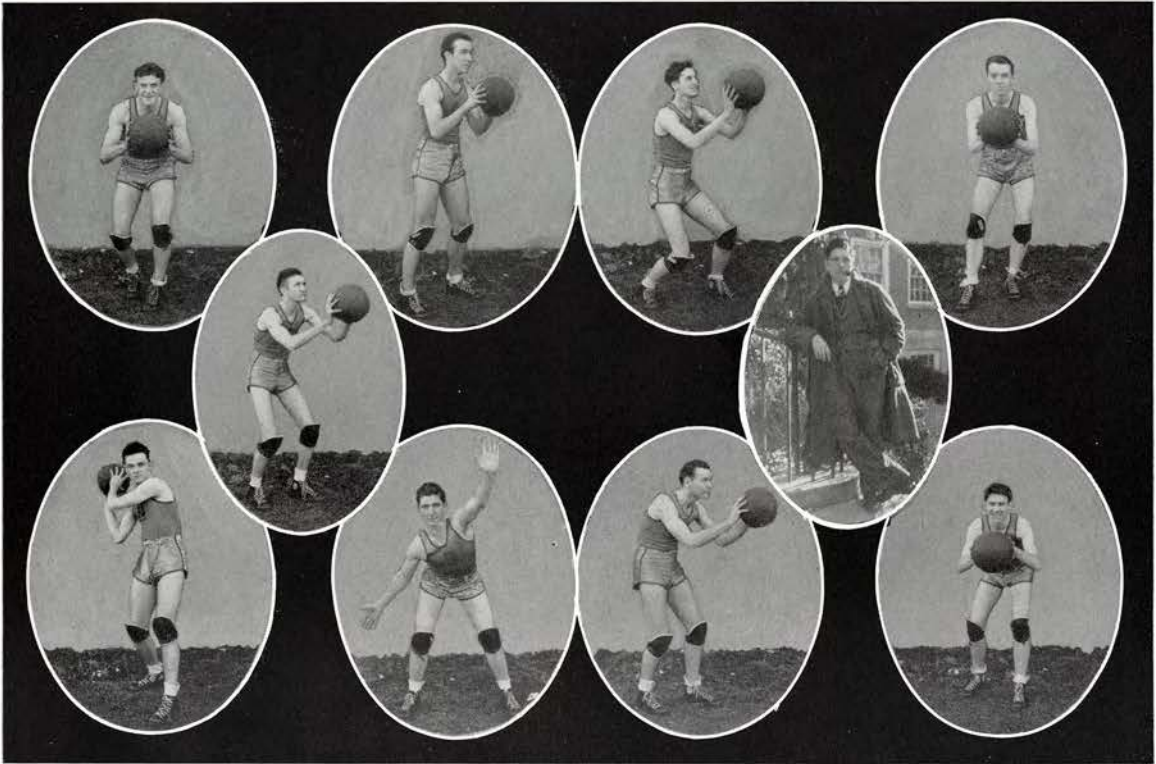
Mable Wallin  
Carl Wheeler

Evelyn Denton  
Jack Britton

Mary Ryburn

Jeane Watkins





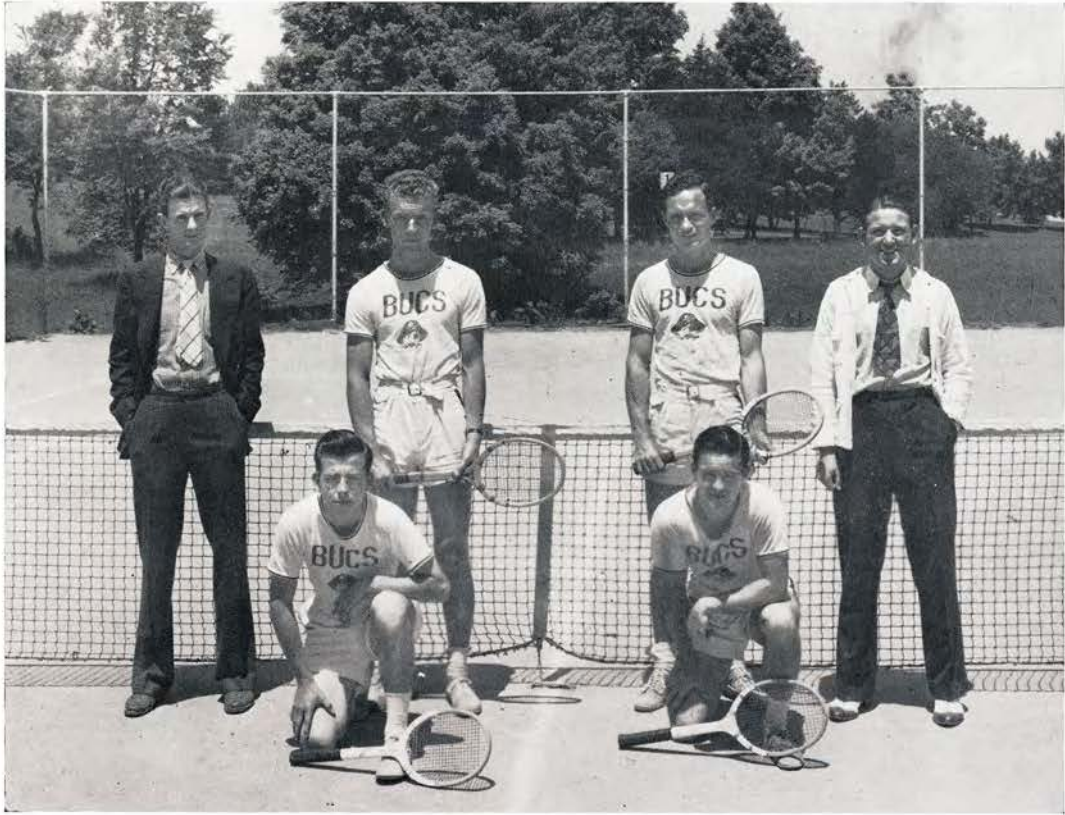
# Basketball

With the previous year's team returning nearly intact the Buccaneer basketballers sensed a very successful season, but due to a slow start the team had to be content with a rather mediocre season.

Highlights of the season were a double victory over Carson Newman, and an overwhelming victory over Milligan, as season's climax.

John Lovegrove has been awarded all-conference guard position. Prospects for next year appear good, yet Captain White and Bowers, both four-year letter men, will be missed.

Team members appearing above are: Lovegrove, Exum, West, Hamblin, White, Bowers, Sanders, Burleson, Keebler, Crawford as manager. Those not pictured are: Wallin, Peterson.



# Tennis

After dominating the Smoky Mountain Conference for the past four years, the Buccaneer racqueteers must depend on a completely rebuilt team to compete for title honors this year. Blaine Robinette and possibly Ace Lane will be the only lettermen available for service this spring. This year's team can hardly be expected to reach the form that carried the Buccaneers to four conference titles and a state championship.

## Schedule

- April 12: Maryville (there)
- 15: Carson Newman (there)
- 16: Tennessee Polytechnic Institute (there)
- 18: Emory & Henry (here)
- 20: Tusculum (there)
- 23: Carson Newman (here)
- 25: Milligan (here)
- 26: Emory & Henry (there)
- 29: Maryville (here)
- May 1: University of South (there)
- 2: University of Chattanooga (there)
- 3-4: T. I. A. A. Tournament (Chattanooga)
- 6: Tusculum (here)
- 7: Milligan (there)
- 11: Tennessee Polytechnic Institute (here)





# Women's Intramurals

## SPORTS CALENDAR

Sports	Seasons	Heads
Drill Squad	Fall	Marie Mitchell
Tennis	Fall	Mary Ryburn
Archery	Fall	Vivien King
Volleyball	Fall	Margaret Hammer
Basketball	Winter	Katherine King
Ping Pong	Winter	Edith Keys
Deck Tennis	Winter	Edith Dunbar
Darts	Winter	Cleo Austin
Horseshoe	Spring	Kate Chandler
Softball	Spring	Edith Dunbar
Badminton	Spring	Katherine King
Hiking	Fall and Spring	Sara Burleson
Golf	Spring	Miss Cole



# Intramurals Administration

Director.....Miss Florence Cole

Intramural Manager.....Hildred Wolfe

Assistant Manager.....Vivien King

## WINNING TEAMS FOR 1939-1940

### *Basketball*

Inez Merritt  
Eula Reecer  
Mary Ramsey  
Dorothy Butler  
Virginia Drinnon  
Willy Clemmer  
Eliza Compton  
Margaret Grills  
Leona Gray  
Marie Mitchell  
Sara Burleson  
Kathryn Brabson

### *Tennis*

Marie Mitchell  
Hildred Wolfe

### *Volleyball*

Kate Chandler  
Dorothy Butler  
Mary Ramsey  
Kathleen Condra  
Mary Ottinger  
Esther Anderson  
Edith Keys  
Sara Burleson  
Katherine King

### *Archery*

Sara Burleson  
Kate Chandler  
Katherine King  
Vivien King

### *Ping-Pong*

Marie Mitchell  
Betty Bagby







Left to Right: Practice House Group; E. Rumbley; Fred  
 Davis; Gross and Herrin; Anderson, Hunt, Wallin; Hiking  
 Group; M. Kelley; Parker and Kitts; Massengill and Car-  
 rier Dorm Marms; John Selman; Thornton and Ryburn;  
 Barton, Phlegar, Wilson; Hiking Group; Sanders and  
 Chapman; Sadie got her man; L. Elliott; Loafers; Love-  
 grove; Keene and Jessie; Dorm. Guys.



ORGANIZATIONS



# International Relations Club

## OFFICERS

President	Margrite Rumbley	Reporter	Phyllis Phlegar
Secretary	Georgia Mae South	Faculty Sponsor	Miss Maxine Mathews

## MEMBERS

Sanna Barlowe	Mack Gross	Charles Keene
Sara Burlison	James Hashbarger	Doris Kirkpatrick
Rex DePew	Kent Herrin	Everette Lowe
Lois Emmert	Earl Hunt	Alma Pugh
Negatha Gourley		

The International Relations Club is the only National Organization on the campus whose entrance is limited to scholarship and to Juniors and Seniors whose records indicate an interest in the study of international and national affairs.

Miss Mathews, the official sponsor is aided by Miss Yoakley, Mr. Chamberlain, Dr. Scott, and Mr. Rogers. The faculty has awarded the organization high esteem and plan to function as active sponsors in the future.



# Pi Kappa Delta

Sponsor: Mr. R. B. Cox

President: Bill Belvin

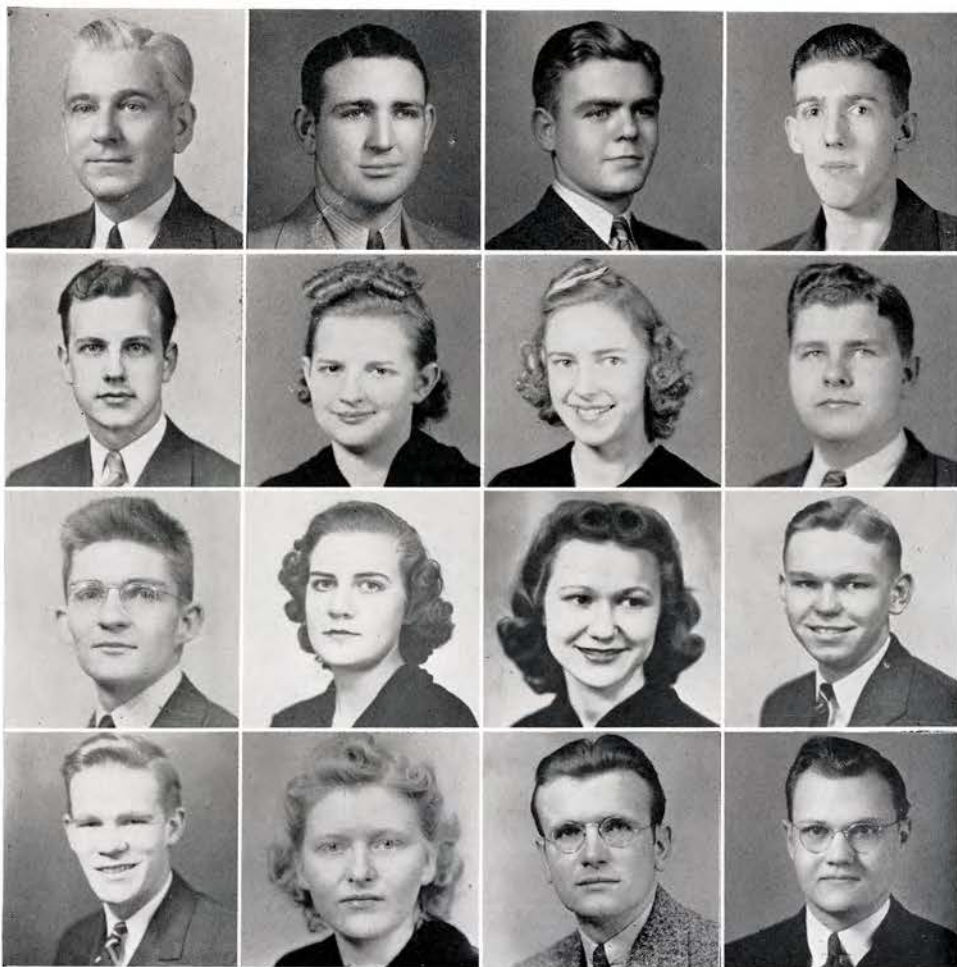
Pi Kappa Delta Forensic Society is one of the few national fraternities represented on the Tennessee State Campus. Our chapter is one of the most active in the nation. During the first half of February the men tied for first place in the Smoky Mountain Men's Tournament at Maryville, and the girls followed closely by taking honors in the women's branch of the same territory at Virginia Intermont College. On the last day in February two groups of representatives were sent out at the same time, one to Carson-Newman where it won first place in a three day State Championship meet, and the other to Hickory, North Carolina, for similar sojourn, where it took third place in the South Atlantic States competition. The season closed with a week's participation in the Pi Kappa Delta National Convention at Knoxville.

## MEMBERS

Mac Gross  
Kent Herrin  
Henry Hartley  
Ann King  
Kathryn Lockett

Harrison Marshall  
Thelma Goforth  
Thomas Morris  
Charles Neas

Phyllis Phlegar  
Margrite Rumbley  
Gunnar Teilman  
Rex Depew  
Earl Hunt





# Pi Sigma

President	Allie Bird Barton	Secretary	Margrite Rumbley
Vice-President	Mable Wallin	Reporter	Anna Thomas

The Pi Sigma Sorority, the oldest organization of its kind on our campus, has functioned throughout its history to promote loyalty to the school and activities of the campus; to deepen the cultural and social life of the college; and to draw the girls who compose it into closer fellowship during their college life.

We are glad to announce this year as one of the most successful ones in our history. The highlights of our year were so arranged as to furnish good times for all members of our campus, as Sadie Hawkins Week, which was culminated by a Sadie Hawkins dance; sponsorship of two school teas and dances; our year will be climaxed by a house party in May.

Π  
Σ



# Pi Sigma

Miss Ella Ross  
 Allie B. Barton  
 Lenore Anderson  
 Winifred Black  
 Miss Eleanor McMillen



Sara Burleson  
 Eula Howard  
 Margaret Copenhaver  
 Kathryn Cook  
 Evelyn Denton



Eloise Fullen  
 Nellie Grigsby  
 Ann Jennings  
 Mary A. Kyker  
 Ida Miller



Beaumont Miller  
 Shirley Kyker  
 Edna Morris  
 Joyce Phlegar  
 Phyllis Phlegar



Eugenia Range  
 Mary Ryburn  
 Evelyn Rumbley  
 Margrite Rumbley  
 Annabell Scott



Lula Smith  
 Anna Thomas  
 Martha Vest  
 Dorothy Wood  
 Mable Wallin





# Sigma Omega

The Sigma Omegas have enjoyed a very successful year. The social calendar for the year is as follows:

- September: Breakfast at Spinning Wheel Tea Room honoring new members.  
October: Tea in Carter Hall entertaining the student body.  
November: Christmas party in the form of a Chili Supper in Training School Cafeteria. Santa attended with gifts for all.  
February: Valentine Banquet in the ballroom of Hotel John Sevier.  
March: Entertained by sponsors at the home of Mrs. Carson.  
April: Hostess to Spring Dance.  
May: House party and last good times with Seniors.

## OFFICERS

President	Lettie Joe Rankin	Secretary	Isabell Holmes
First Vice-President	Joyce Brakbill	Treasurer	Dorothy Harrod
Second Vice-President	Esther Anderson	Reporter	Mary E. Kinskie

Σ  
Ω



# Sigma Omega

Vera Hoover  
 Esther Anderson  
 Thelma Bennett  
 Joyce Brakbill  
 Mrs. T. C. Carson



Grace E. Bewley  
 Bonnie Brobeck  
 Dorothy Butler  
 Marie Catron  
 Eloise Coffee



Kathryn Condra  
 Savel Dawson  
 Elizabeth Doane  
 Naomi Donaldson  
 Mary Sue Evans



Ruth Green  
 Sidney Harrell  
 Dorothy Harrod  
 Isabel Holmes  
 Mamie Killian



Nell Kincaid  
 Mary Elizabeth Kinsie  
 Ruth May  
 Lillian McCabe  
 Inez Merritt



Kathryn Mottern  
 Elizabeth Rader  
 Lettie Joe Rankin  
 Kathleen Taylor  
 Una Thomas



Hazel Tindall  
 Jean Treece  
 Agnes R. Zirkel  
 Edith Massengill  
 Mary R. Pittillo





# Footlight Players

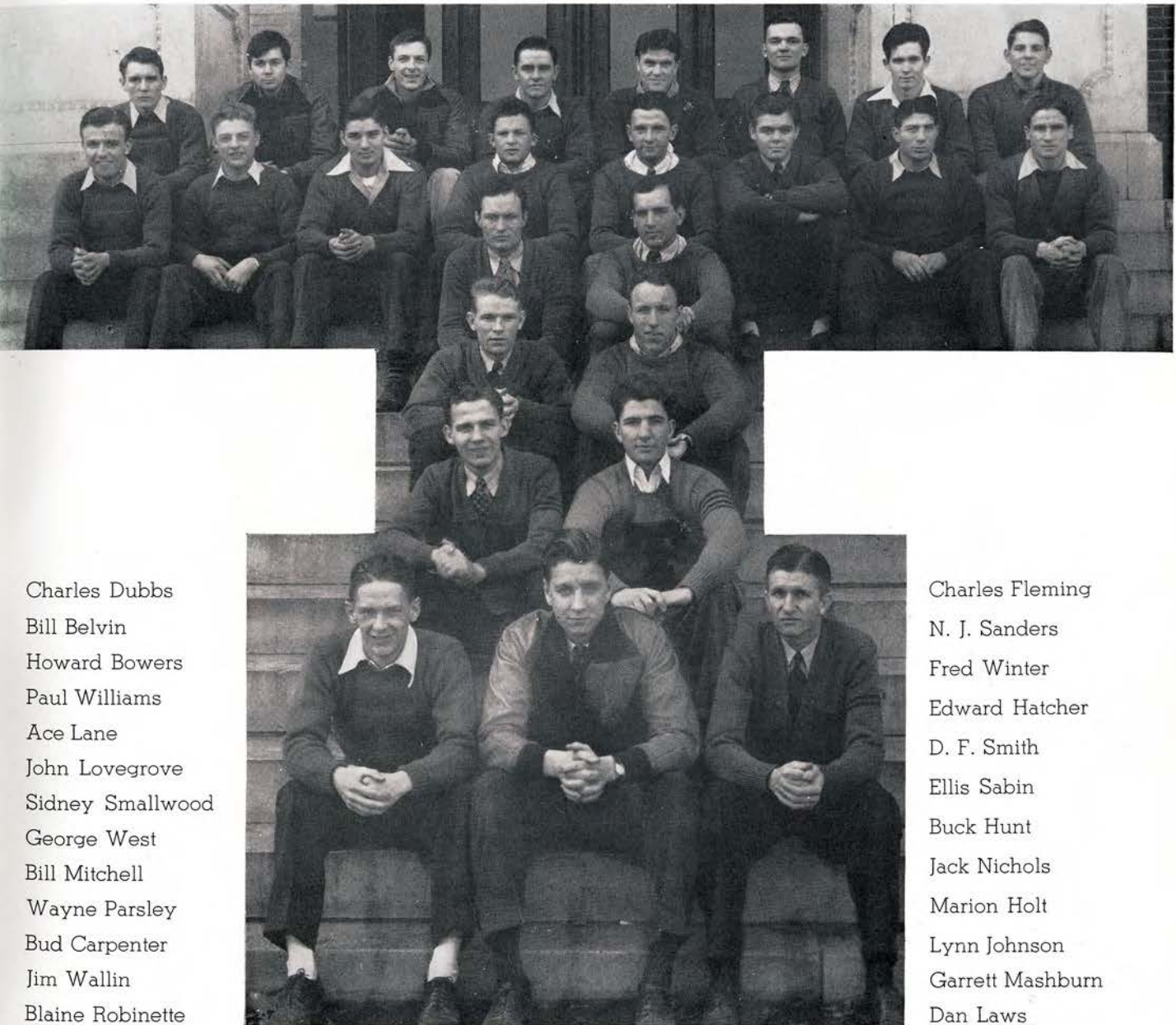
This year our organization has attempted to develop among our members the use of the speaking voice and the body with attention to social needs. Thru the presentation and study of plays we have increased the level of appreciation of the various forms of drama.

Six one-act plays, including an original Christmas play, a three-act play and a choral speech program were presented. Excerpts from "The Taming of the Shrew" were studied as monologues. Sixty-five students participated.

The presentations featured below are, "Submerged," and The Choral Speech.



# 19 "T" Club 40



Charles Dubbs  
 Bill Belvin  
 Howard Bowers  
 Paul Williams  
 Ace Lane  
 John Lovegrove  
 Sidney Smallwood  
 George West  
 Bill Mitchell  
 Wayne Parsley  
 Bud Carpenter  
 Jim Wallin  
 Blaine Robinette

Charles Fleming  
 N. J. Sanders  
 Fred Winter  
 Edward Hatcher  
 D. F. Smith  
 Ellis Sabin  
 Buck Hunt  
 Jack Nichols  
 Marion Holt  
 Lynn Johnson  
 Garrett Mashburn  
 Dan Laws

## OFFICERS

	President	Fred Thornton	
Vice-President	Runa White	Secretary	Harry Range



# F. T. A.

The Future Teachers of America is a new organization on our campus but is one which is progressing with zeal and enthusiasm. Its program is made up of various studies of school problems and their solutions which otherwise would prove difficulties to the beginning teacher.

The members appearing below are: Fred Woods, Frances Wheeler, Dorothy Butler, Paul Massengill, Charles Keene, Helen Clark, Isabell Holmes, N. J. Sanders, Una Thomas, Phyllis Phlegar, Lillian Anthony, Runa White, Paul Williams, James Hashberger, Margaret Koonce, Kathleen Condra, Georgia Barnes, Elizabeth Dyer, Edith Keys, Lettie Rankin, Geo. Clemmer, Lillian McCabe, Nell Kincaid, Luther Crawford.



# Y. W. C. A.

## OFFICERS

President	Helen Clarke	Assistant Business Manager	Marie Catron
1st Vice-President	Lois Turbyfill	Reporter	Thelma Goforth
2nd Vice-President	Bonnie Myers	Cabinet Members	
Secretary	Cleo Austin	All officers and the following:	
Treasurer and Business Manager	Mary Elizabeth Kinskie	Lydia Leonard, Louise McQueen,	Mary Ottinger

The Young Women's Christian Association meets every Wednesday evening in Carter Hall. Vesper Services are held every Sunday afternoon. Membership in the organization is composed of all the young women of the dormitory.





# Home Economics Club

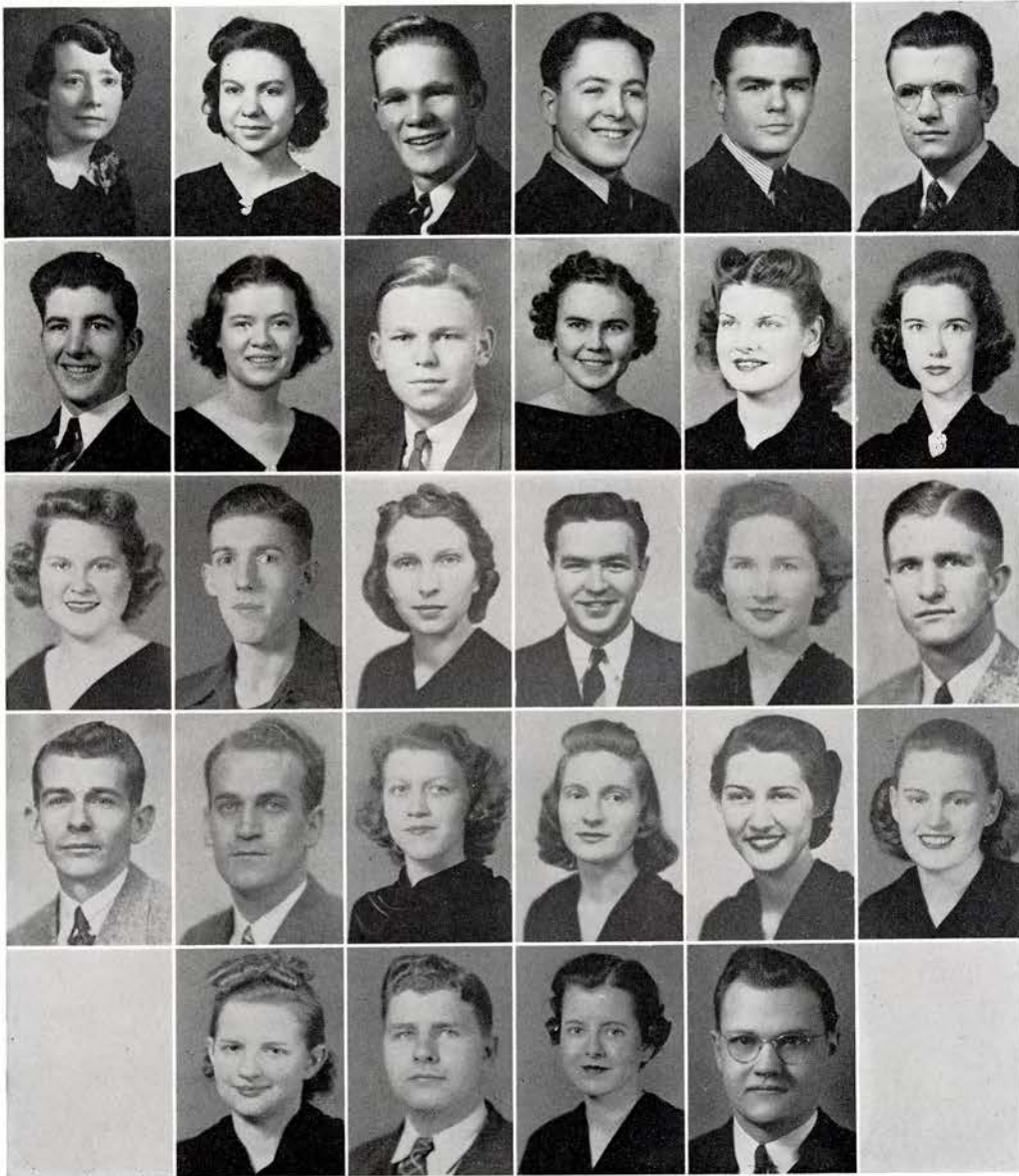


The Home Economics Club is made up of all girls who are majors in Home Economics or who may be planning upon majoring in Home Economics. The Club attempts to further work in Home Economics and interest others in this work. Two meetings are held each month—one a social and one a business meeting.

President	Helen Clarke	Reporter	Kathryn Miller
Vice-President	Helen Walker	Sponsors	Mrs. Ada H. Earnest
Secretary and Treasurer	Edith Keys		Miss Mary L. Gordy

The following members appear above:  
 Clark, Walker, Keys, Miller, Anthony, Anderson, Catron, Hurd, Elliott, Rader, Hill, Grindstaff, Dawson, Hammer, Vandersteen, Rhea, Cable, Wallin, Bowman, Hall, Hammer, Stiltner, Bond, Sharp, Grigsby, Lee, Babb, Rader, Ross Tindall, Shown, Dunbar, Evans, Anderson, Blevins, Wood, Holly, Massengill.

# Tau Alpha Omega



## OFFICERS

President, Lettie Jo Rankin; Vice-President, Harrison Marshall; Secretary, Mary Ann Kyker

## MEMBERS APPEARING ABOVE

Miss Ruth Thomas,  
Sponsor  
Isabell Holmes  
Harrison Marshall  
George Wilson  
Bill Belvin  
Rex Depew  
N. J. Sanders  
Mary E. Kinskie  
Gunnar Teilman

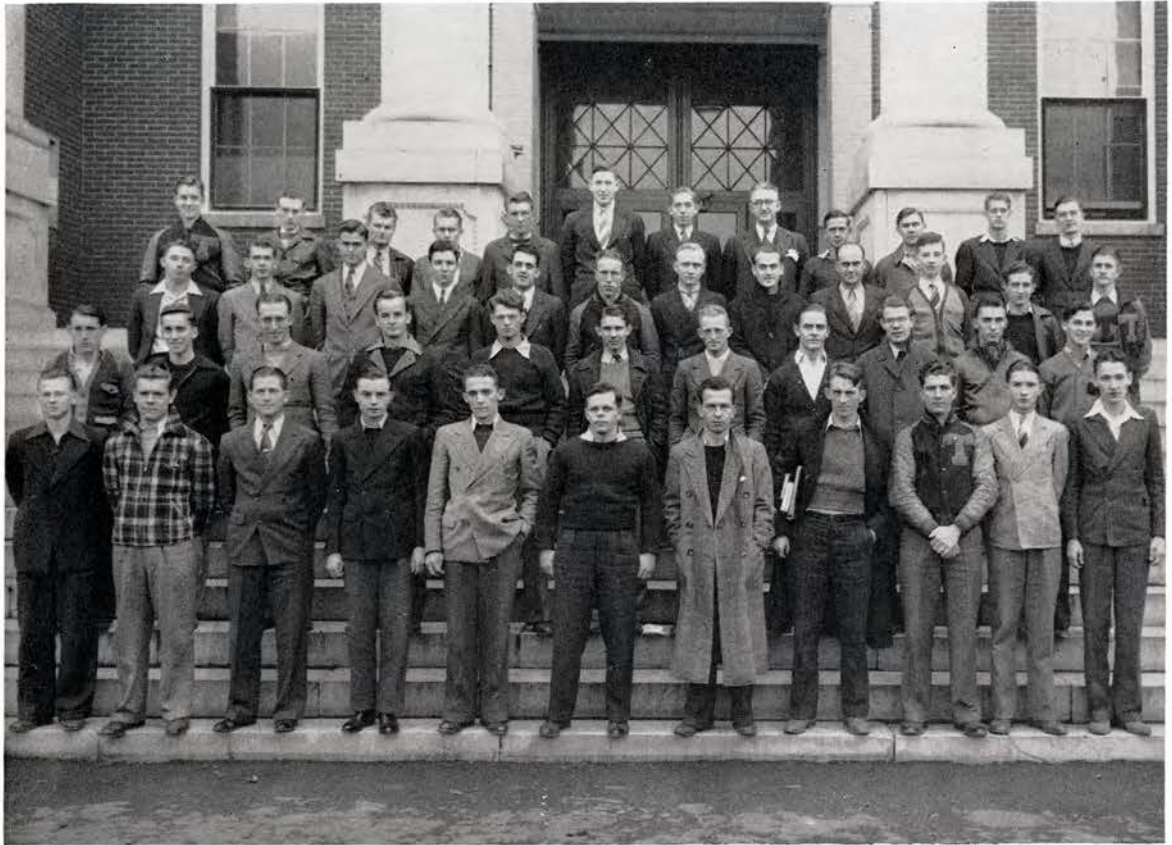
Georgia M. South  
Eliz. Rader  
Lettie Joe Rankin  
Mary Ann Kyker  
Kent Herrin  
Lois Emmertt  
Clinton Claiborne  
Eloise Coffee  
Runa White  
Jas. Hashbarger

Fred Woods  
Kearnie Rogers  
Negatha Gourley  
Marylin Vandersteen  
Lenore Anderson  
Ann King  
Tom Morris  
Mamie Killian  
Earl Hunt

New members not ap-  
pearing above:  
Herbert Bolton  
Dora Hale  
Anna Sue Lacey  
Jeanne Lowery  
Dorothy Mitchell  
Bob Parsons  
Eugene Taylor



# The Pestalozzians

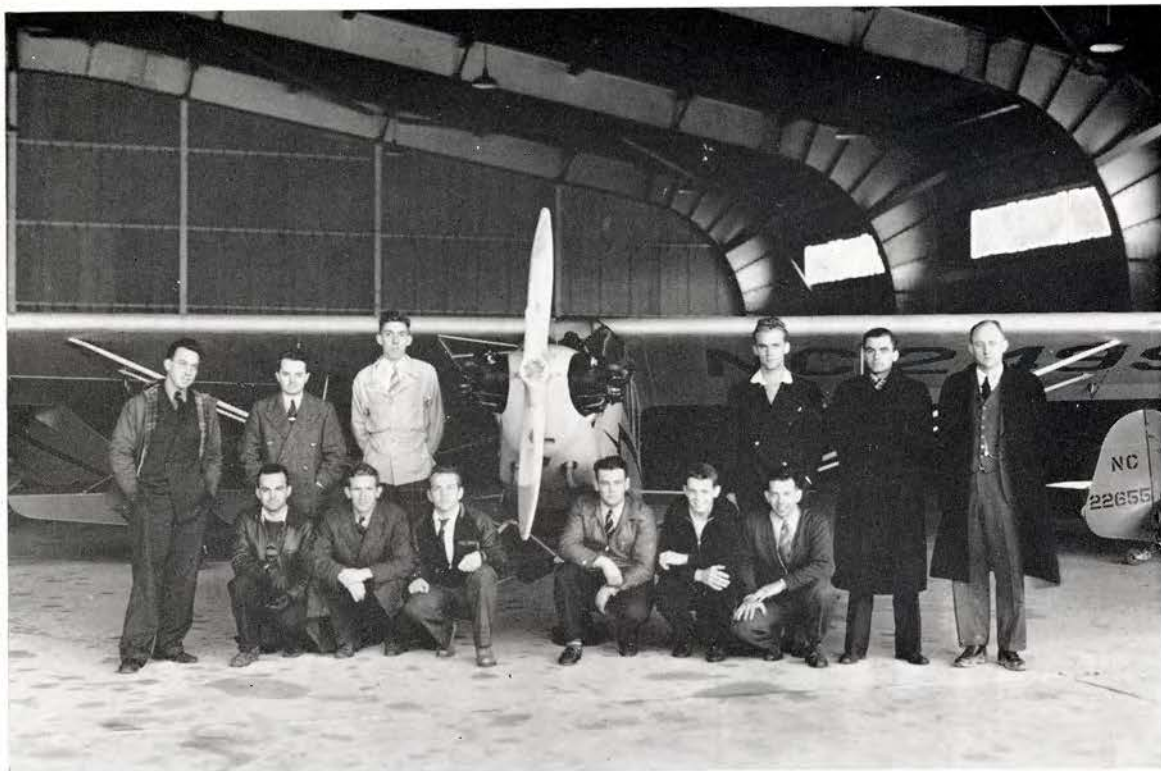


This society is composed of all young men who reside in Ritter Hall. Its aims are cooperation, wholesome fellowship and ultimately a more enjoyable college life for everyone.

Officers for 1939-1940 are:

President	James Hashberger	Vice-President	N. J. Sanders
Secretary-Treasurer	Clinton Claiborne	Sponsors	Dr. and Mrs. P. W. Alexander

# Civilian Pilots



As a result of the Civil Aeronautics Authority's attempt to train twenty thousand airplane pilots a year, this school has been fortunate enough to obtain the civilian pilots' training course.

The following are receiving this training thru our school: Louis Jones, Bill Hart, Kent Herrin, Eugene Lane, Edmund Rawlins, Pierce Carson, Branch Lawson, Buell Feathers, Ted Norton, and Bill McCune.

There are two phases of training in this flying program: the "ground work" and the actual flight training. We are very fortunate in having faculty members who are well versed in this field. Dr. Huddle, instructor in aerodynamics and theory of flight, and Mr. Chamberlain, instructor in meteorology and navigation, direct our "ground" activities. Mr. Keith Wagar, of the Tri-City Airport, serves as flight instructor.

With the completion of thirty-five hours of flight instruction and a test by the Civil Aeronautics Authority inspector, those passed will receive private pilot licenses.







**FEATURES**





Sara  
Burleson

Phyllis  
Phlegar



N. J. Sandets



Matgkite  
Rumbley



William  
Belvin

East Tennessee State Representatives in  
Who's Who of American Colleges

*East Tennessee State Beauties  
Selected by McClellan Barclay*



*Annabell  
Scott*



*Oral  
Huffaker*



*Agnes  
Zirkle*



*Mary F.  
Kelly*



*Mamie  
Killian*



# *Autographs*

# The State Teachers College

## Johnson City

A COLLEGE DEDICATED TO THE SERVICES OF THE STATE

---

COURSES ARE OFFERED IN:

AGRICULTURE	GERMAN	LIBRARY SCIENCE
BIOLOGY	GEOGRAPHY	MATHEMATICS
CHEMISTRY	HEALTH	MUSIC
COMMERCE	HISTORY	PHYSICAL EDUCATION
ENGLISH	HOME ECONOMICS	PHYSICS
EDUCATION	INDUSTRIAL ARTS	SCIENCE FOR THE ELE-
FINE ARTS	LATIN	MENTARY GRADES
FRENCH		SOCIAL SCIENCE

Students may major in any field of their choice. Students wishing to take pre-professional courses may do so.

---

The College prepares teachers for elementary and high school, principals, supervisors, and superintendents.

---

OVER 90% OF THE GRADUATES ARE EMPLOYED

---

Write for catalog and application blanks. Address:

Miss Eleanor Carlock, Secretary,  
State Teachers College,  
Johnson City, Tennessee



Complete Outfitters of All Sports

## LONDON'S

HARDWARE PAINT  
SPORTING GOODS

## Hannah Bros. Inc.

WHOLESALE DRY GOODS  
NOTIONS AND FURNISHINGS

## Snyder-Jones Pharmacy

"The Prescription Store"

Johnson City - - - Tennessee

"Say it with Flowers and Say it with  
Ours"

## KINKEAD—The Florist

Sevier Theatre Building  
Johnson City - - - Tennessee



Compliments of

## WHITE CITY LAUNDRY

JOHNSON CITY - - - TENNESSEE

# THE BURR HARRISON STUDIO

210½ East Main Street

JOHNSON CITY, TENNESSEE



HIGH GRADE PORTRAITS  
COMMERCIAL PHOTOGRAPHS

PHOTOGRAPHER FOR THE BUCCANEER

*Southern Maid*  
ICE CREAM

SOUTHERN MAID DAIRIES, Inc.

500 SOUTH ROAN STREET

JOHNSON CITY, TENNESSEE

Compliments of

**SCOTT'S**  
**Grocery**

THE  
STUDENTS STORE

Compliments of

**Johnson City Automobile  
Dealers**

AUTO RENEWAL CO.  
ARNEY MOTOR CO.  
AUTO SALES CORP.  
DEAKINS MOTOR CO.  
FREEMAN MOTOR CO.  
HILL-SUMMERS CHEVROLET CO., INC.  
MOTOR SALES CORP.  
RANGE MOTORS INC.  
TENNESSEE MOTOR CO.  
UNIVERSAL MOTOR CO.  
C. I. T. CORP.  
GUMP INVESTMENT CO.



Enjoy the  
pause that refreshes  
at home



BUY THE SIX-  
BOTTLE CARTON

**25¢**

Plus deposit



Compliments of

**THOMAS'**

MEN'S WEAR  
WOMEN'S WEAR

Compliments of

**The SEVIER  
THEATRE**

"Where Everybody Goes"

Johnson City's Home Owned Theatre

Compliments of

**Wofford Brothers, Inc.**

GENERAL INSURANCE

Johnson City - - - Tennessee

"Your Store"  
**FIELD'S**

Johnson City, Tenn.

PHONE 5126

**JONES-VANCE DRUG STORE**

PRESCRIPTIONS — ONLY THE BEST

Cor. Main and Springs Sts.

Johnson City - - - Tennessee

Compliments of

**SMYTHE ELECTRIC CO.**

Johnson City - - - Tennessee

Compliments of

**A FRIEND**

**Martin's Beauty Shop**

"We Specialize in Permanents"

111 Spring St.

Phone 598-W

Compliments of

**THE BYPATH**

Johnson City - - - Tennessee

*Congratulations Seniors*

**PET  
DAIRY**

NUNN-BUSH SHOES  
DOBBS HATS

**HANNAH'S**  
For Good Clothes

ARROW SHIRTS  
VARSITY TOWN CLOTHES

Compliments of

**Johnson City Steam  
Laundry**

JOHNSON CITY - - TENNESSEE



# The Roxy

Where the Service and Food  
is Deluxe

SODA FOUNTAIN  
BAR-BEE-Q SANDWICHES

For Better Values

# Shop the VOGUE

206 East Main Street

DRESSES - COATS - SUITS  
SPORTSWEAR - MILLINERY  
FURS AND SHOES

---

Up To The Minute Styles

WE ARE PROUD  
OF OUR  
TEACHERS COLLEGE

Proud, too, of the fact that we have been  
jewelers in Johnson City for 54 years!  
Diamonds - Watches - Jewelry

## BECKNERS'

## DOSSER'S

Headquarters for  
GRADUATION GIFTS

Compliments of

## PARKS-BELK COMPANY

JOHNSON CITY - - TENNESSEE

*Compliments of*

## HAMILTON National Bank

BOWLING

BILLIARDS

**Johnson City Recreation Center**

106-8 Spring Street

Where All Good Sports Get Together

**THE CHOCOLATE BAR**

"Uncle Arthur's Place"

Sodas - Lunch - Music - Magazines

A Good Place To Meet Your Friends

Roy H. Jones

Floyd D. Wilhott

**Majestic Barber Shop**

Majestic Theatre Bldg.

CLEAN, EFFICIENT SERVICE

Bill Price

Primus Dees

Compliments of

**S. H. KRESS & CO.**

Johnson City - - - Tennessee

**O. L. HUFF & CO.**

GENERAL MERCHANDISE

Erwin

Tennessee

Compliments of

**Unaka STORES**

Erwin

Tennessee

**Clinchfield Drug Co.**

"Only The Best"

Erwin, Tenn.

Phone 7

Compliments of

**Ritze Beauty Shoppe**

Phone 357-J

100 Spring St.

Johnson City

Compliments

**John Sevier Hotel**

One of East Tennessee's Leading Hotels

EXCELLENT COFFEE SHOP

M. T. McArthur, Manager

"Johnson City's Best"

**DELUX CAB CO.**

Phone 5272

Open Day and Night

25 E. Market St.

Johnson City

**BONDS REPAIR SHOP**

116 South Roan Street

Phone 1110-L

Walter Bond, Mgr.

Johnson City



COMPLIMENTS  
OF  
**American Bemberg Corp.**  
AND  
**North American Rayon Corp.**

Compliments of  
**White Star Flour**  
JOHNSON CITY - - - TENNESSEE

Compliments of  
**PEOPLE'S BANK**  
Member of Federal Deposit Insurance  
Corporation  
Johnson City - - - Tennessee

**G. E. Treadway & Son**  
Farm Machinery - Garden and Field  
Seeds - Tuxedo Feeds and VC Fertilizer  
Phone 439  
Johnson City - - - Tennessee

Compliments of  
**LOWRY FRUIT CO.**  
Johnson City - - - Tennessee

Compliments of  
**SALYER CANDY CO.**

Compliments of  
**C. L. DeBoard Mills**  
Manufacturers of  
**WHITE DOT FLOUR**  
JOHNSON CITY - - - TENNESSEE

## The Sevier Shop

CANDY - SODA - CIGARS

John Sevier Hotel

PHONE 5114          FREE DELIVERY

## Free Service Tire Company

GOODYEAR TIRES AND

ESSO PRODUCTS

HOME OF DELCO RADIOS

518          Phones          12

GET YOUR FLOWERS FROM

## Gunnar Teilmann & Son

"Johnson City's Leading Florists"

303 ROAN ST.          PHONE 511

## ANDERSON DRUG STORE

ON THE MINUTE SERVICE

Phone 1094

"The Convenient Corner"

Johnson City - - - Tennessee

Compliments of

## YELLOW CAB

Phone 5252

Compliments of

## JOHNSON CITY TRANSIT CO. INC.

## FLORIST

Mrs. Ruth Andrews

Floral Designs - Pot Plants - Corsages

302 S. Roan St.          Johnson City

Compliments of

## CHARLES STORE CO.

## LYLE FURNITURE CO.

Kelvinator Refrigerators - Zenith Radios  
Electric Washers and Ranges

123-125 Spring St.

Phone 271          Johnson City

## MASENGILL'S

Smart Apparel

Compliments of

## JENNINGS CANDY CO.

Johnson City - - - Tennessee

Compliments of

## SAM S. FAIN



*You're most likely to find it at King's*

We invite you . . . to test for yourself this quotation that comes from the lips of many a smart "Teacher" . . . whether your want is a high fashion or one of the minor everyday necessities of life.

## KING'S

*East Tennessee's Most Complete  
Department Store*

"Where Those Who Know Buy Their Clothes"

<p>Compliments of</p> <p><b>PEPSI-COLA BOTTLING COMPANY</b></p> <p>JOHNSON CITY - - TENNESSEE</p>	<p>Compliments of</p> <p><b>Appalachian Funeral Home</b></p> <hr/> <p>Compliments of</p> <p><b>KISER FUNERAL HOME</b></p>
<p>Compliments of</p> <p><b>BROWN MILLING CO.</b></p>	<p>Compliments of</p> <p><b>F. K. MORRIS</b></p>
<p><b>Hilbert's Drug Store</b> "Reliable Prescription Service" Swift's Ice Cream    Whitman Candies Phone 16                      Jonesboro, Tenn.</p>	<p>Compliments of</p> <p><b>Charlie Cargille Studio</b></p>



EAST TENNESSEE STATE UNIVERSITY



3 6302 0073 7681 5



EAST TENNESSEE STATE UNIVERSITY



3 6302 0073 7681 5