

East Tennessee State University

## Digital Commons @ East Tennessee State University

---

Tennessee Climate Office Monthly Report

---

11-1-2018

### 2018 November - Tennessee Monthly Climate Report

Tennessee Climate Office, East Tennessee State University

Follow this and additional works at: <https://dc.etsu.edu/tn-climate-monthly-reports>



Part of the [Climate Commons](#), and the [Meteorology Commons](#)

---

#### Recommended Citation

Tennessee Climate Office, East Tennessee State University, "2018 November - Tennessee Monthly Climate Report" (2018). *Tennessee Climate Office Monthly Report*. 15.

<https://dc.etsu.edu/tn-climate-monthly-reports/15>

This Report is brought to you for free and open access by Digital Commons @ East Tennessee State University. It has been accepted for inclusion in Tennessee Climate Office Monthly Report by an authorized administrator of Digital Commons @ East Tennessee State University. For more information, please contact [digilib@etsu.edu](mailto:digilib@etsu.edu).

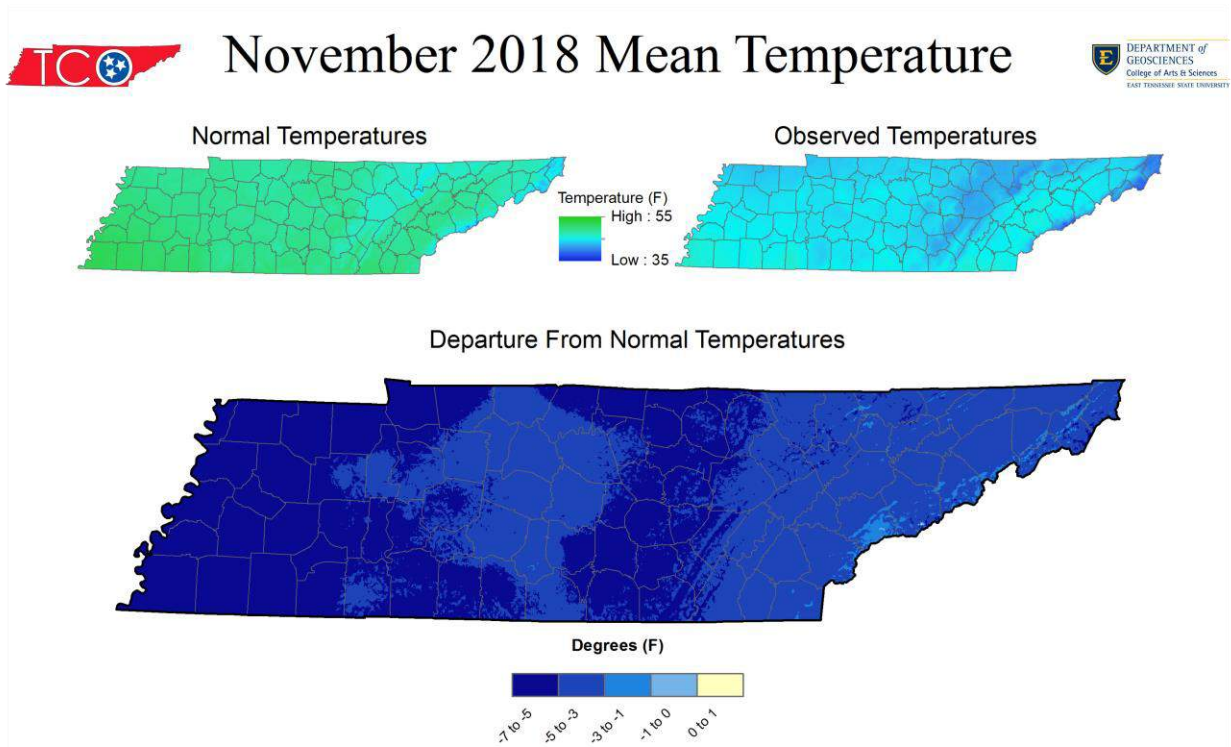
# November 2018 Tennessee Climate Summary

Prepared by William Tollefson and Dr. Andrew Joyner

Tennessee Climate Office \* East Tennessee State University

## Monthly Temperature Summary:

November started out warmer than normal, in a continuation of a very warm October; however a strong frontal boundary moved through the state on November 5<sup>th</sup>. After that system a cold pattern set up for the remainder of the month, leading to mean temperatures which were 3-7°F below average for most of the state. The second week of the month brought temperatures that were more than ten degrees below normal for the western half of the state, with some areas in northwest Tennessee recording mean temperatures that stayed below 40°F for the period from the 8<sup>th</sup> to the 14<sup>th</sup>. The cool conditions were so persistent, that only one weather station reported a temperature above the 70's for the month of November (a maximum temperature of 80°F, at UT Martin).



Stations with the highest mean temperature

Name	Station Type	Mean Temperature (F)
BIG SOUTH TENNESSEE	RAWS	54.5
TENNESSEE RIDGE	COOP	54.1
LIVINGSTON RADIO WLIV	COOP	49.9
ALAMO 1 N	COOP	48.2
MEMPHIS INTERNATIONAL AP	WBAN	47.9

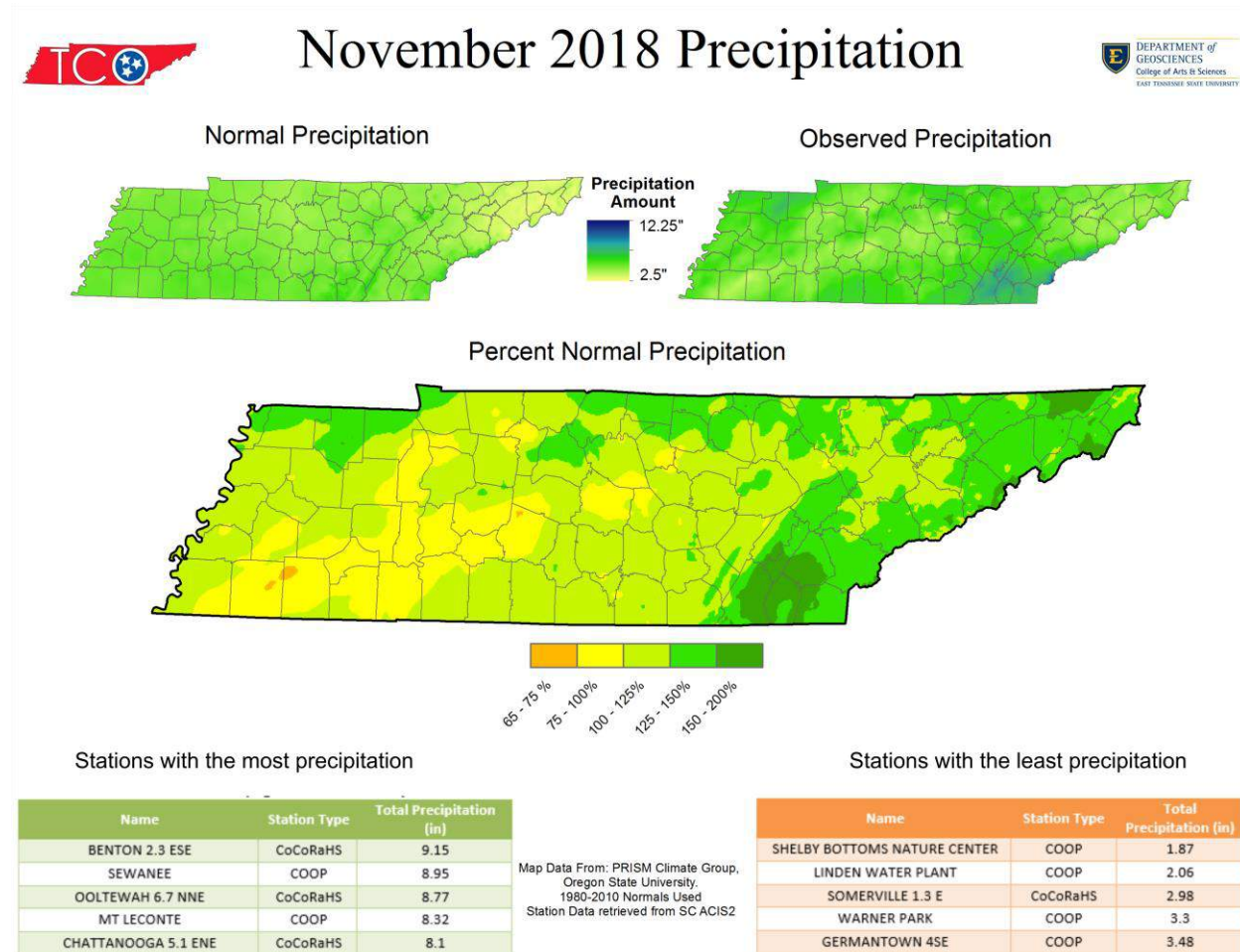
Map Data From: PRISM Climate Group,  
Oregon State University.  
1980-2010 Normals Used  
Station Data retrieved from SCACIS2

Stations with the lowest mean temperature

Name	Station Type	Mean Temperature (F)
MT LECONTE	COOP	33.3
NEWFOUND GAP	COOP	37.8
DRESDEN	COOP	40.4
COALMONT	COOP	40.5
ROAN MOUNTAIN 3SW	COOP	40.8

## Monthly Precipitation Summary:

Recorded precipitation totals for the month were within 25% of normal values for a majority of the state, with a few small drier spots in southwest Tennessee, and some wetter areas in the northern and eastern counties of the state. However, most of this rainfall came in the first half of the month. The strong frontal system that ushered in the cool weather, also produced more than two inches of rain for the western two-thirds of the state. After that week the axis of heavier precipitation shifted to the eastern half of the state. Some snowfall was recorded during each week, except the first week of the month.



Top Tenn (warmest, coldest, wettest, driest stations of the month):

**Hottest Stations (highest max temp):**

Name	Station Type	Max Temperature (F)
UT MARTIN EXP STATION	COOP	80
GERMANTOWN 4SE	COOP	79
AMES PLANTATION	COOP	78
LEWISBURG EXP STA	COOP	78
MILAN EXP STN	COOP	78
COLLIERVILLE	COOP	78
MEMPHIS WFO	WBAN	77
SAVANNAH 6 SW	COOP	77
BOLIVAR WATER WORKS	COOP	77
ATHENS	COOP	77
MOUNT PLEASANT 1N	COOP	77
JACKSON EXP STA	COOP	77
SEVIERVILLE	COOP	77
NASHVILLE BERRY FIELD	COOP	77

**Coldest Stations (lowest min temp):**

Name	Station Type	Lowest Temperature (F)
MT LECONTE	COOP	2
NEWFOUND GAP	COOP	7
WHITE HOUSE	COOP	11
CROSSVILLE 7 NW	WBAN	12
CROSSVILLE MEMORIAL AP	WBAN	13
MONTEREY	COOP	13
FALL CREEK FALLS SP	COOP	13
BLEDSON SF TENNESSEE	RAWS	14
INDIAN GRAVE TENNESSEE	RAWS	14
WOODBURY 1 WNW	COOP	14
SMITHVILLE 2 SE	COOP	14
JAMESTOWN	COOP	14
SPRINGFIELD EXP STATION	COOP	14
BRENTWOOD	COOP	14
COALMONT	COOP	14
GOODLETTSVILLE 7WNW	COOP	14
ROAN MOUNTAIN 3SW	COOP	14

**Warmest Stations (highest mean temps):**

Name	Station Type	Mean Temperature (F)
BIG SOUTH TENNESSEE	RAWS	54.5
TENNESSEE RIDGE	COOP	54.1
LIVINGSTON RADIO WLIV	COOP	49.9
ALAMO 1 N	COOP	48.2
MEMPHIS INTERNATIONAL AP	WBAN	47.9
SHILOH NMP TENNESSEE	RAWS	47.7
SAVANNAH 6 SW	COOP	47
GERMANTOWN 4SE	COOP	47
ARDMORE	COOP	46.9
MC MINNVILLE	COOP	46.8

**Coolest Stations (lowest mean temps):**

Name	Station Type	Mean Temperature (F)
MT LECONTE	COOP	33.3
NEWFOUND GAP	COOP	37.8
DRESDEN	COOP	40.4
COALMONT	COOP	40.5
ROAN MOUNTAIN 3SW	COOP	40.8
JAMESTOWN	COOP	40.9
TAZEWELL	COOP	41.1
CROSSVILLE 7 NW	WBAN	41.2
GOODLETTSVILLE 7WNW	COOP	41.5
MONTGOMERY BELL ST Park	COOP	41.7

**Wettest Stations (highest rainfall totals):**

Name	Station Type	Total Precipitation (in)
BENTON 2.3 ESE	CoCoRaHS	9.15
SEWANEE	COOP	8.95
OOLTEWAH 6.7 NNE	CoCoRaHS	8.77
MT LECONTE	COOP	8.32
CHATTANOOGA 5.1 ENE	CoCoRaHS	8.1
CLEVELAND FILTER PLANT	COOP	7.8
ATHENS	COOP	7.69
SPRING CITY	COOP	7.62
OOLTEWAH 2.0 S	CoCoRaHS	7.45
NEWFOUND GAP	COOP	7.44

**Driest Stations (lowest rainfall totals):**

Name	Station Type	Total Precipitation (in)
SHELBY BOTTOMS NATURE CENTER	COOP	1.87
LINDEN WATER PLANT	COOP	2.06
SOMERVILLE 1.3 E	CoCoRaHS	2.98
WARNER PARK	COOP	3.3
GERMANTOWN 4SE	COOP	3.48
MORRISTOWN 5.3 W	CoCoRaHS	3.6
HENRY 4.5 N	CoCoRaHS	3.61
ERWIN 1 W	COOP	3.68
BRENTWOOD	COOP	3.68
BOLIVAR WATER WORKS	COOP	3.7

**Snowiest Stations (total monthly snowfall):**

Name	Station Type	Total Snowfall (in)
UNION CITY	COOP	2
MT LECONTE	COOP	1.8
BRUCETON 0.2 E	CoCoRaHS	1.8
JACKSON 5.6 NE	CoCoRaHS	1.7
JACKSON 4.3 N	CoCoRaHS	1.7
BELLS 2.5 NE	CoCoRaHS	1.6
HUNTINGDON WATER PLANT	COOP	1.5
CAMDEN	COOP	1.5
JACKSON 4 NE	COOP	1.5
NEWBERN 6.5 SE	CoCoRaHS	1.5
PARIS 1.0 W	CoCoRaHS	1.5
JACKSON 2.9 N	CoCoRaHS	1.5

52 stations reported measurable snowfall during the month, with an additional 78 stations reporting a trace.

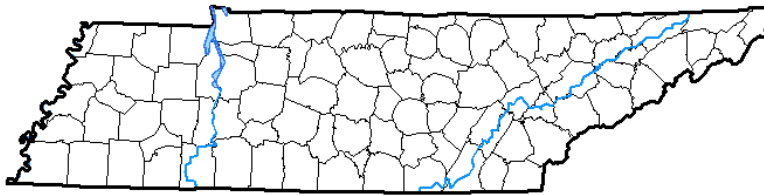
## Drought Monitor:

Heavy rains in the western two-thirds of the state in the first week of November led to the removal of D0 conditions from the state (small areas of McNairy, Hardin, Lawrence, and Giles counties) in the first drought monitor of November. By the end of the month, there were still no drought conditions present in the state, however parts of southwest TN were being monitored for possible D0 conditions.

### U.S. Drought Monitor Tennessee

*Author:*  
Richard Heim  
NCEI/NOAA

**November 27, 2018**  
(Released Thursday, Nov. 29, 2018)  
Valid 7 a.m. EST



*Intensity:*

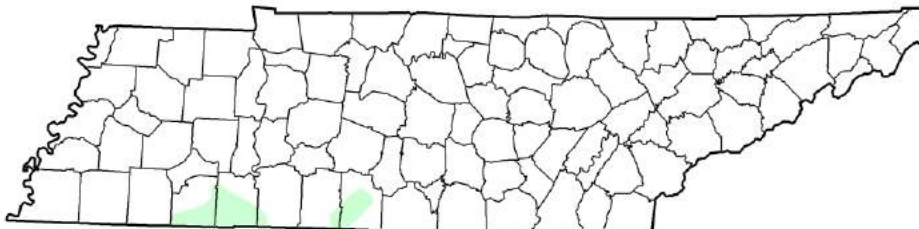
- D0 Abnormally Dry
- D1 Moderate Drought
- D2 Severe Drought
- D3 Extreme Drought
- D4 Exceptional Drought

*The Drought Monitor focuses on broad-scale conditions. Local conditions may vary. See accompanying text summary for forecast statements.*

<http://droughtmonitor.unl.edu/>



### U.S. Drought Monitor Class Change - Tennessee 1 Month



November 27, 2018  
compared to  
October 30, 2018

<http://droughtmonitor.unl.edu>



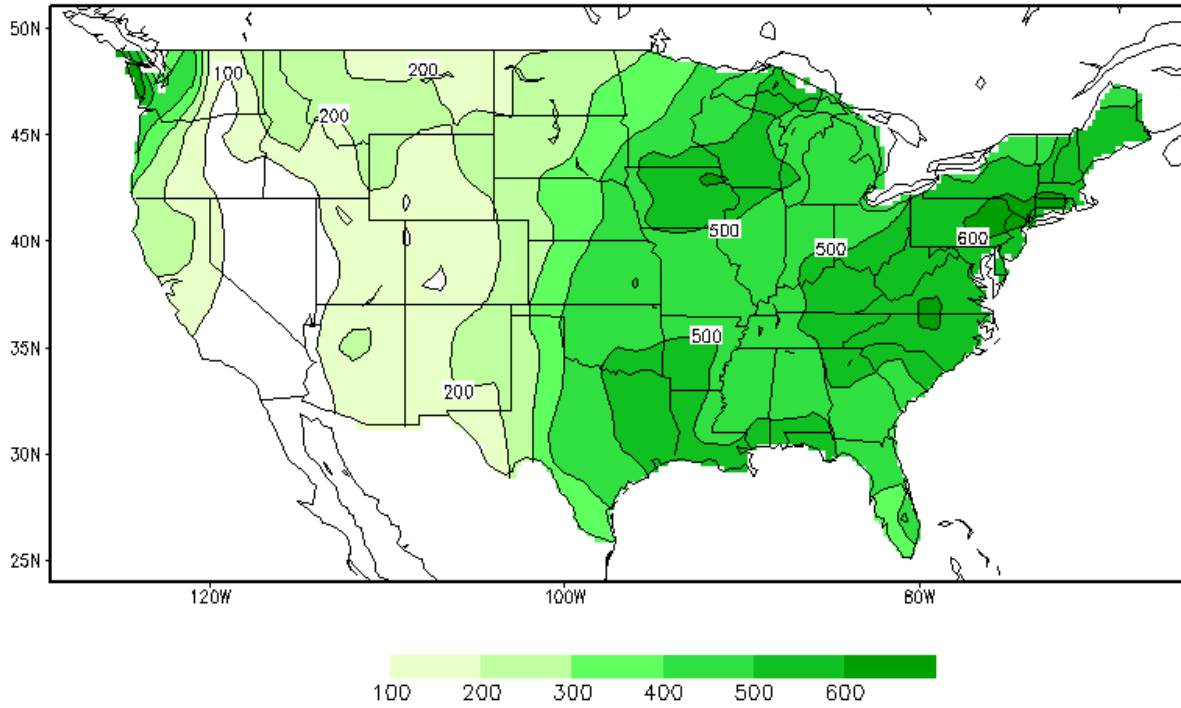
- 5 Class Degradation
- 4 Class Degradation
- 3 Class Degradation
- 2 Class Degradation
- 1 Class Degradation
- No Change
- 1 Class Improvement
- 2 Class Improvement
- 3 Class Improvement
- 4 Class Improvement
- 5 Class Improvement

## Soil Moisture:

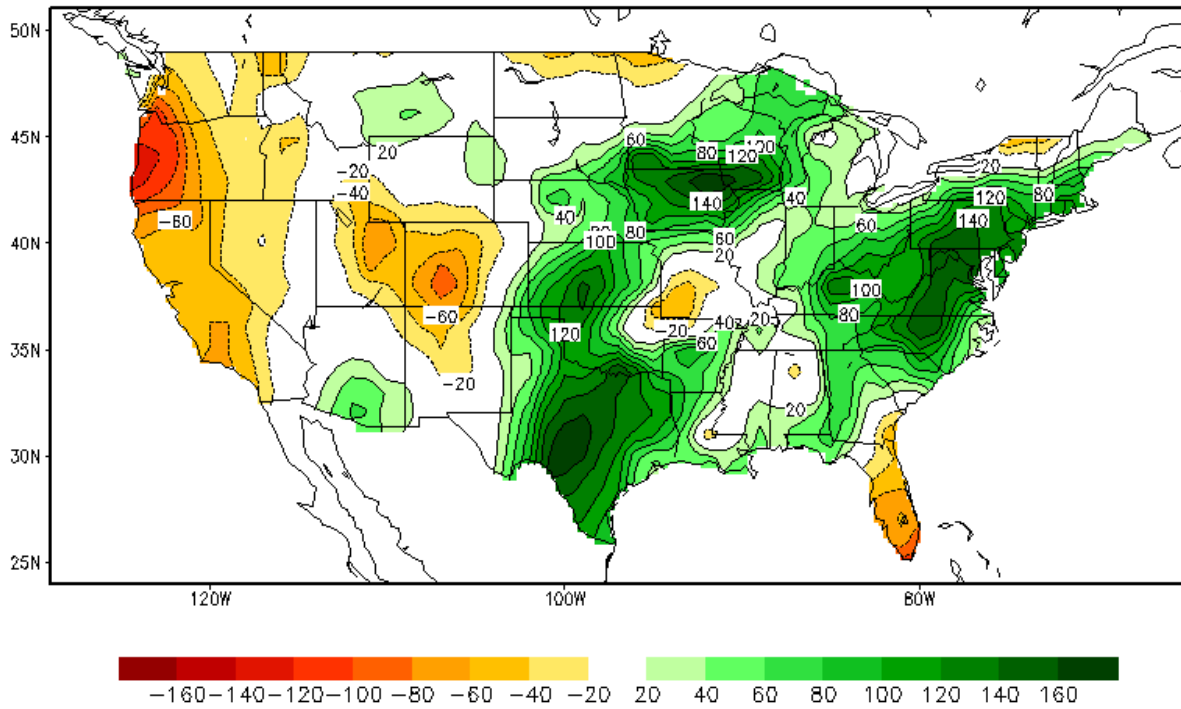
Soil moisture was at to above normal in all parts of the state averaged over the month, with only 1% of the state reporting below adequate soil moisture by the end of the month. However, soil moistures showed much stronger positive anomalies in the eastern half of the state, where rainfall was spread more evenly throughout the month.



Calculated Soil Moisture (mm)  
NOV, 2018



Calculated Soil Moisture Anomaly (mm)  
NOV, 2018





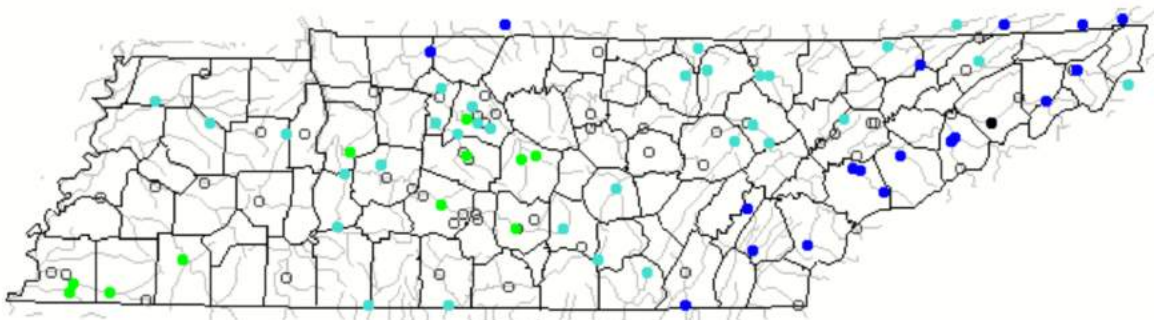
### Streamflow:

Streamflow patterns followed precipitation and soil moisture anomalies: with normal and above normal streamflow present for West and Middle Tennessee, and many streams in East Tennessee reporting much above normal streamflow.

## Map of monthly streamflow compared to historical streamflow for the month of the year (Tennessee)

Tennessee ▼ or Water-Resources Regions ▼

November 2018



Search USGS streamgage 🔍

Choose a data retrieval option and select a location on the map

- List of all stations  Single station  Nearest stations  Peak flow

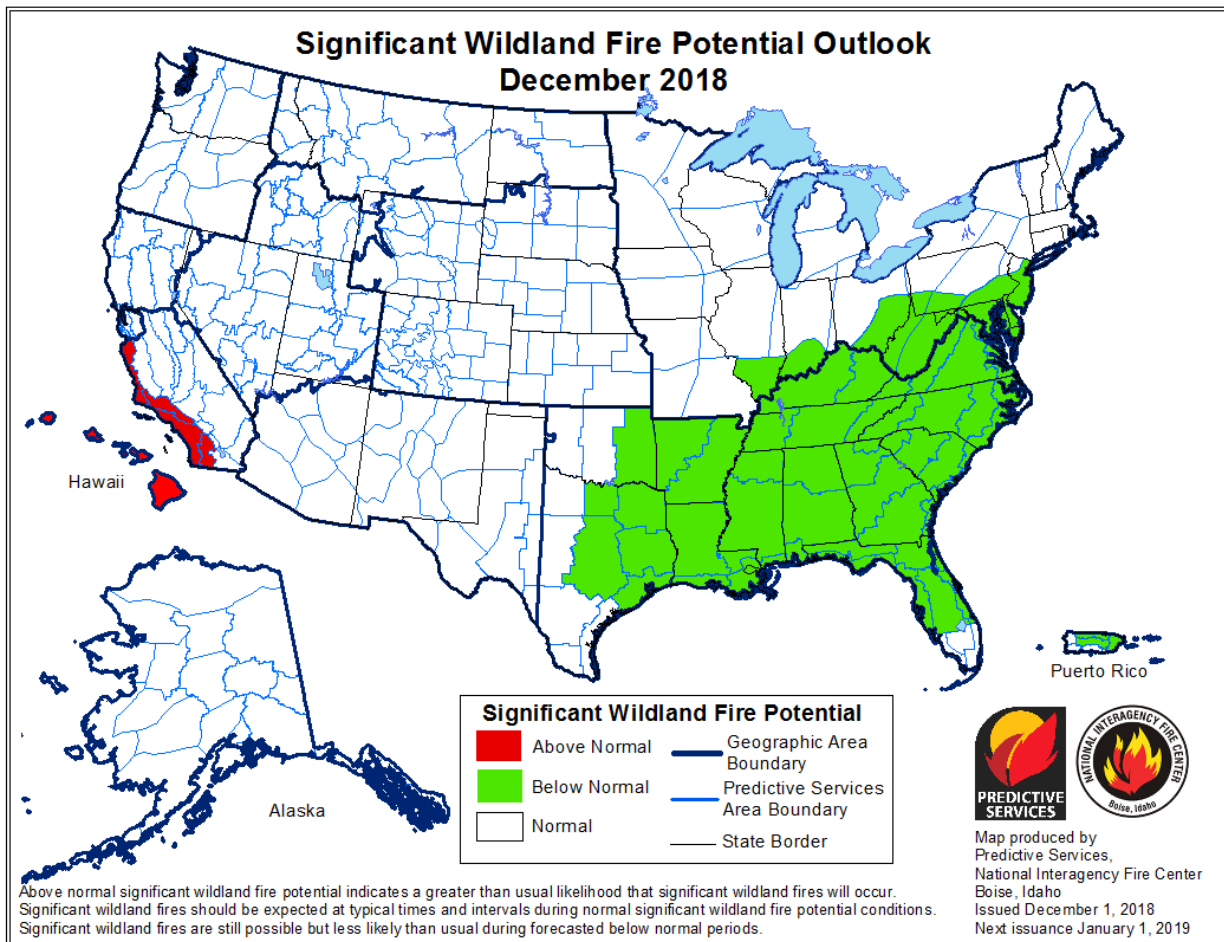
Explanation - Percentile classes							
Low	<10	10-24	25-75	76-90	>90	High	Not-ranked
	Much below normal	Below normal	Normal	Above normal	Much above normal		

### Miscellaneous:

**Crop Conditions from USDA:** Frequent rainfall kept many farmers from doing much field work, however corn harvests were complete by the third week of November, Cotton crops were nearly all harvested by the end of the month, but soybean harvests were still behind schedule. The planting of winter wheat was also behind last year's progress, mainly due to wet fields. As of the last crop weather report on Nov 25<sup>th</sup>, Tennessee farmers took advantage of rare breaks in the wet weather last week to continue harvesting row crops, primarily soybeans. Not only are there crops to be harvested, producers are also planting winter wheat. There are reports of equipment getting stuck in muddy fields. To date, emerged winter wheat looks good. Cattle producers are starting to feed hay. Topsoil moisture rated 1 percent short, 57 percent adequate, and 42 percent surplus. Subsoil moisture rated 1 percent short, 60 percent adequate, and 39 percent surplus.

CROP PROGRESS					CONDITION					
Crop	This Week	Last Week	2017	5 Year Avg.	Item	Very Poor	Poor	Fair	Good	Excellent
	Percent					Percent				
Cotton – Harvested	92	87	90	88	Pasture	1	14	42	39	4
Soybeans – Harvested	83	74	90	92	Winter Wheat	0	2	31	60	7
Winter Wheat – Planted	83	74	90	N/A						
Winter Wheat - Emerged	67	59	78	N/A						

**Fire Danger:** With long term precipitation surpluses, the wildland fire potential for December is forecast to be below normal.



**Snowfall:** Snow as reported in some part of the state during three of the four weeks this month, with the largest event occurring on the 14<sup>th</sup> and 15<sup>th</sup> in West Tennessee, when a few stations reported over 2 inches of snow. Snow and ice were also observed in northwest TN earlier on the 11<sup>th</sup>, and the plateau and mountains recorded some measurable snow towards the end of the month. Overall 52 stations reported measurable snowfall during the month, with an additional 78 stations reporting a trace.



# US National Weather Service Memphis Tennessee

15 November at 12:17



How much snow did we get? Well, here are the unofficial Snowfall Totals from around the Mid-South.



NWS Memphis Facebook post of snowfall reports



Photos of snow and ice near Martin, TN on Nov 11<sup>th</sup>. Photo credit: Matthew Chesnutt, via Facebook.





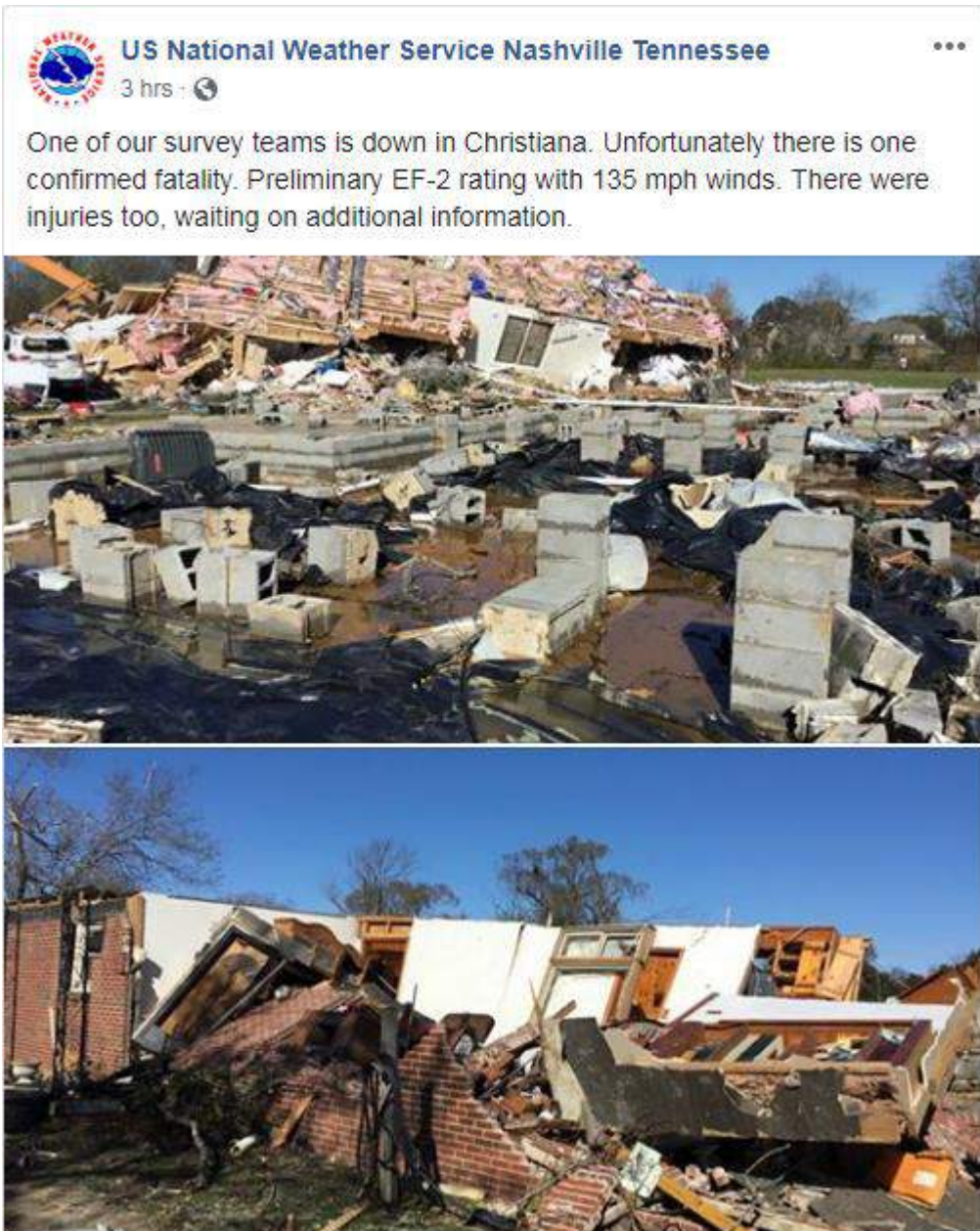
*Snowcapped mountains in Great Smoky Mountains National Park, from the Clingmans Dome weather cam on November 28<sup>th</sup>.*

## Story of the month:

The biggest story of the month was the severe weather outbreak that occurred overnight on the 5<sup>th</sup> and into the early morning hours of the 6<sup>th</sup>. This event produced 10 tornadoes and 63 reports of wind damage in Middle and East Tennessee. The EF-2 tornado that started in Bedford County and moved into Rutherford County killed one person, and injured three others. The event was well forecast, as the area where most tornadoes occurred were covered in the enhanced risk category in the severe weather outlook issued on the 5<sup>th</sup>, with outlooks issued several days in advance as well. Additionally a tornado watch was also issued prior to the event. More details on tornado reports and wind damage follow in the storm reports section of the monthly climate report.



*Radar from midnight (CST) Nov. 6<sup>th</sup> as the line of severe storms with several tornado warnings pushed through Middle Tennessee.*

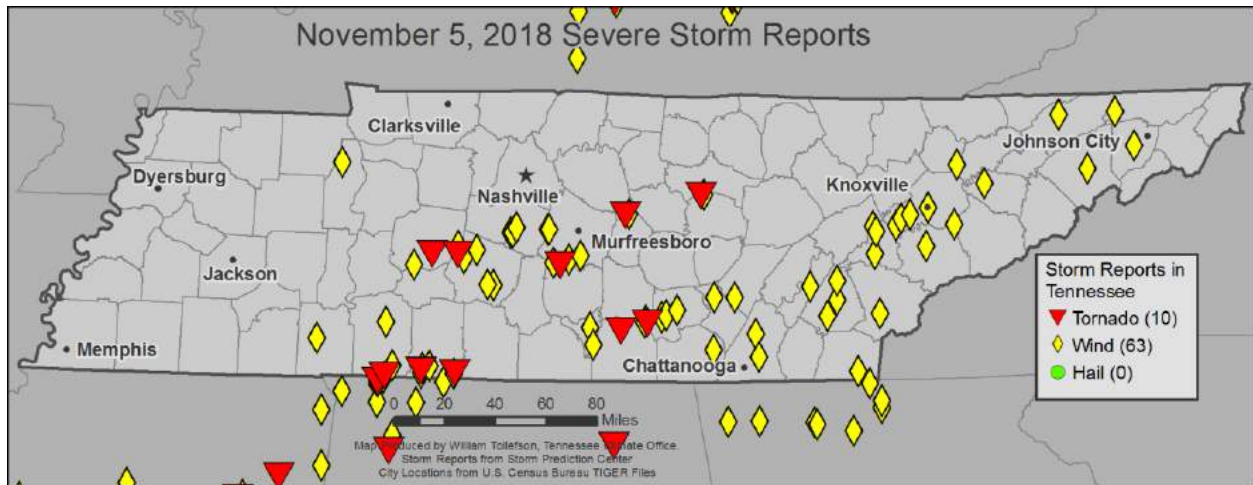


NWS Nashville Facebook post showing damage to home in Christiania, TN that was associated with the fatal EF-2 tornado.



## Storm reports:

There was one day during November with severe weather (overnight on the 5<sup>th</sup> and into the 6<sup>th</sup>), with ten tornadoes and sixty-three reports of severe wind damage.



## Tornado Reports:

Time (UTC)	Strength	Location	County	Lat	Lon	Comments
4:59	EF0	6 S CENTERVILLE	HICKMAN	35.71	-87.44	THIS EF-0 TORNADO TOUCHED DOWN WEST OF SWAN CREEK ROAD AND MOVED NORTHEAST DESTROYING A BARN AND UPROOTING SEVERAL TREES. TWO BARNES HAD ROOF DAMAGE ON TOTTY HOLLOW LANE (OHX)
5:10	EF0	3 WNW WILLIAMSPORT	HICKMAN	35.71	-87.26	THIS EF-0 TORNADO TOUCHED DOWN JUST EAST OF THE NATCHEZ TRACE PARKWAY AND MOVED NORTHEAST UPROOTING TREES AND ROLLING SEVERAL 2000 LBS HAY BALES. THE TORNADO CROSSED HI (OHX)
5:20	EF0	10 W IRON CITY	WAYNE	35.01	-87.76	THIS IS A CONTINUATION OF A TORNADO THAT STARTED IN LAUDERDALE COUNTY... ALABAMA. THE EF0 TORNADO CROSSED INTO TENNESSEE SNAPPING SEVERAL LARGE BRANCHES AND CAUSING MIN (OHX)
5:38	EF1	1 N ST. JOSEPH	LAWRENCE	35.04	-87.51	THE EF1 TORNADO BEGAN ON BLUFF ROAD IN SOUTHERN LAWRENCE COUNTY. AS IT MOVED NORTHEAST IT ROLLED A MOBILE HOME... DEMOLISHED 2 HAY BARNES AND CAUSED MINOR ROOF DAMAGE TO (OHX)
5:52	EF0	6 W MINOR HILL	LAWRENCE	35.03	-87.27	THE EF0 TORNADO TOUCHED DOWN JUST EAST OF HWY 98... DAMAGING SEVERAL CHICKEN BARNES. IT



						TRAVELED NORTHEAST AND AS IT CROSSED HOOD HOLLOW ROAD... CAUSED MINOR DAMAGE TO O (OHX)
6:16	EF2	9 SE EAGLEVILLE	BEDFORD	35.65	-86.54	*** 1 FATAL... 3 INJ *** THE EF-2 TORNADO TOUCHED DOWN IN NORTHERN BEDFORD COUNTY AND DAMAGED A FEW OUTBUILDINGS AND TREES. IT QUICKLY INCREASED IN INTENSITY TO EF-2 AS (OHX)
6:51	EF1	1 ESE AUBURNTOWN	CANNON	35.94	-86.08	THE EF-1 TORNADO BEGAN NEAR AUBURNTOWN IN CANNON COUNTY ON HURRICANE CREEK RD. IT CAUSED SPORADIC TREE DAMAGE AS IT CONTINUED NORTHEAST. A CARPORT AND WELL BUILT TAXIDE (OHX)
7:18	EF2	1 NE ESTILL SPRINGS	FRANKLIN	35.28	-86.11	TREES AND POWER LINES DOWN ON BETH PAGE ROAD. TORNADO DEBRIS SIGNATURE (TDS) ASSOCIATED WITH THIS DAMAGE. (HUN)
7:26	EF0	11 WNW TRACY CITY	COFFEE	35.32	-85.93	A CONTINUATION OF THE EF-2 TORNADO IN FRANKLIN CO... TN. THE TORNADO ENTERED COFFEE CO. AS AN EF-0 TORNADO... SNAPPING LARGE BRANCHES AND CAUSING ROOF DAMAGE TO A BARN. (OHX)
7:27	EF0	3 N BAKERS CROSSROADS	WHITE	36.05	-85.55	THE EF0 TORNADO TOUCHED DOWN ON JOSH BROWN ROAD AND BETTY LANE WHERE IT SNAPPED TREES AND BROKE SEVERAL LARGE BRANCHES. AS IT MOVED EAST IT DESTROYED A BARN ON SOUTH BU (OHX)

Wind Reports:

Time (UTC)	Speed (mph)	Location	County	Lat	Lon	Comments
16:26	--	SAVANNAH	HARDIN	35.22	-88.24	A FEW AREAS WITH SMALL TREE LIMBS DOWN... AND A SHORT POWER OUTAGE. (MEG)
17:36	--	6 SSE COLUMBIA	MAURY	35.54	-87.01	TREES DOWN ACROSS MOORSVILLE PIKE IN MAURY COUNTY. ROAD WAS CLOSED AT TIME OF REPORT. (OHX)
17:41	--	4 S FRANKLIN	WILLIAMSON	35.87	-86.85	50-75 FOOT TREE DOWN IN FRONT YARD. (OHX)
2:40	--	BIG SANDY	BENTON	36.23	-88.09	SEVERAL TOPS OF TREES DOWN ON HIGHWAY 69 BETWEEN BIG SANDY AND CAMDEN. (MEG)

4:26	--	SAVANNAH	HARDIN	35.22	-88.24	A FEW AREAS WITH SMALL TREE LIMBS DOWN... AND A SHORT POWER OUTAGE. (MEG)
4:50	65	WAYNESBORO	WAYNE	35.32	-87.76	EMERGENCY MANAGER REPORTS ESTIMATED 65 MPH GUST IN DOWNTOWN WAYNESBORO (OHX)
4:50	--	WAYNESBORO	WAYNE	35.32	-87.76	A TREE FELL ONTO A CAR ON FOLGER DRIVE IN WAYNESBORO (OHX)
4:52	--	7 N HOHENWALD	HICKMAN	35.65	-87.57	SEVERAL TREES WERE SNAPED AND UPROOTED TO THE SOUTHEAST AND SOUTH ALONG KIMMINGS BRIDGE ROAD AND ARNOLD ROAD. POSSIBLE TORNADO. (OHX)
5:11	--	4 S PRIMM SPRINGS	HICKMAN	35.76	-87.26	SEVERAL TREES WERE UPROOTED ALONG LEATHERWOOD ROAD AT DRY PRONG ROAD. POSSIBLE TORNADO. (OHX)
5:19	--	8 WNW IRON CITY	WAYNE	35.07	-87.71	HOUSE DAMAGED ON MIDDLE CYPRESS CREEK ROAD IN SOUTHERN WAYNE COUNTY. (OHX)
5:34	--	ST. JOSEPH	LAWRENCE	35.03	-87.51	NUMEROUS POWER LINES DOWN AROUND ST. JOSEPH (OHX)
5:36	--	6 SSE COLUMBIA	MAURY	35.54	-87.01	TREES DOWN ACROSS MOORSVILLE PIKE IN MAURY COUNTY. ROAD WAS CLOSED AT TIME OF REPORT. (OHX)
5:39	--	6 S COLUMBIA	MAURY	35.54	-87.05	TREE DOWN NEAR THE INTERSECTION OF PULASKI HWY AND MURPHY LANE SOUTH OF COLUMBIA (OHX)
5:39	--	3 NE THOMPSON'S STATION	WILLIAMSON	35.84	-86.89	TREES UPROOTED AND FENCE BLOWN DOWN ON ERIN LANE. POSSIBLE TORNADO. (OHX)
5:40	--	3 NE THOMPSON'S STATION	WILLIAMSON	35.84	-86.88	TREES DOWN IN FAIRVIEW... GOOSE CREEK AT MCLEMORE... ROCKY FORD AT FLY ROAD... AND IN THOMPSONS STATION (OHX)

5:41	--	2 N ST. JOSEPH	LAWRENCE	35.06	-87.5	TRAILERS REPORTEDLY FLIPPED OVER ON PENNY ROAD. POSSIBLE TORNADO. (OHX)
5:41	--	4 S FRANKLIN	WILLIAMSON	35.87	-86.85	50-75 FOOT TREE DOWN IN FRONT YARD. (OHX)
5:45	--	1 SW LORETTO	LAWRENCE	35.07	-87.45	36 INCH DIAMETER TREE UPROOTED ACROSS 2ND AVENUE IN LORETTO. FOOTBALL SCOREBOARD DAMAGED AT LORETTO HIGH SCHOOL NEAR SAME LOCATION. (OHX)
5:50	--	6 W MINOR HILL	LAWRENCE	35.03	-87.28	POWER LINES DOWN AT 123 HOOD HOLLOW ROAD IN SOUTHERN LAWRENCE COUNTY (OHX)
5:50	--	4 E ARRINGTON	WILLIAMSON	35.86	-86.63	TREES DOWN ON SPANNTOWN ROAD. POSSIBLE TORNADO. (OHX)
5:58	--	4 E ARRINGTON	WILLIAMSON	35.86	-86.63	A FEW TREES WERE BLOWN DOWN ON A FARM ON OLD MURFREESBORO ROAD (OHX)
5:59	--	5 E ARRINGTON	WILLIAMSON	35.86	-86.62	SEVERAL SHINGLES WERE BLOWN OFF A HOME ON SPANNTOWN ROAD. (OHX)
6:05	--	SANTA FE	MAURY	35.74	-87.13	TREE DOWN ON FLY ROAD IN SANTA FE (OHX)
6:10	--	WILLIAMSPORT	MAURY	35.69	-87.22	SEVERAL TREES DOWN IN THE WILLIAMSPORT AREA (OHX)
6:14	--	1 SE ROVER	BEDFORD	35.67	-86.59	STORAGE BARN WAS OVERTURNED... SEVERAL TREES DOWN... OTHER STRUCTURAL DAMAGE ON AMY LANE (OHX)
6:22	--	7 E ROVER	RUTHERFORD	35.69	-86.48	HOUSE COMPLETELY COLLAPSED AT 8085 MIDLAND ROAD IN CHRISTIANA...POSSIBLE TORNADO (OHX)
6:25	--	9 NNW BELL BUCKLE	RUTHERFORD	35.71	-86.4	REPORTS OF SEVERAL STRUCTURES DAMAGED... INCLUDING A ROOF MISSING FROM A STRUCTURE ON ROCK SPRINGS ROAD. POSSIBLE TORNADO. (OHX)

6:54	--	2 E AUBURNTOWN	CANNON	35.95	-86.06	TREE LIMBS AND POWER LINES DOWN. RESPONDERS ON SCENE. POSSIBLE TORNADO DAMAGE. (OHX)
7:00	--	2 ENE LYNCHBURG	MOORE	35.3	-86.33	TREES DOWN AT PLEASANT HILL ROAD AT JACEY LANE. (HUN)
7:05	--	6 SSE LYNCHBURG	MOORE	35.2	-86.31	A TREE WAS PARTIALLY BLOCKING STATE HIGHWAY 50 NEAR THE FRANKLIN COUNTY LINE. (HUN)
7:29	--	12 SE MANCHESTER	COFFEE	35.34	-85.94	MULTI-VEHICLE ACCIDENT INCLUDING A TRACTOR TRAILER THAT FLIPPED AT MM126. A SECOND TRACTOR TRAILER ALSO HIT ANOTHER TRUCK. DOWNED TREES REPORTED. POSSIBLE TORNADO. (OHX)
7:30	--	12 SE MANCHESTER	COFFEE	35.33	-85.95	HOMES REPORTEDLY DAMAGED AND NUMEROUS TREES AND POWER LINES DOWN WITH ROADS BLOCKED IN THE BETSY WILLIS ROAD AREA IN RUTLEDGE HILL. POSSIBLE TORNADO. (OHX)
7:31	--	3 SSE BURGESS	WHITE	36.06	-85.53	METAL ROOF PEELED BACK... CONTAINERS OVERTURNED... AND ANTENNA TOWER DOWN AT AIRPORT. NEARBY BARN LEVELED. (OHX)
7:36	--	7 WNW COALMONT	GRUNDY	35.36	-85.83	ONE HOME HAD ROOF RIPPED OFF AND NUMEROUS POWER POLES WERE SNAPPED ON BURROUGHS COVE ROAD NEAR PELHAM. POSSIBLE TORNADO. (OHX)
7:40	--	5 WNW COALMONT	GRUNDY	35.37	-85.8	HIGHWAY 50 REPORTED TO BE COMPLETELY BLOCKED BY FALLEN TREES (OHX)
7:45	--	2 SSE ALTAMONT	GRUNDY	35.4	-85.72	TREES AND POWER LINES DOWN ON HIGHWAY 56. POSSIBLE TORNADO. (OHX)
8:00	--	PALIO	BLEDSE	35.47	-85.32	HIGHWAY 127 AND OLD 28 CLOSED WITH NUMEROUS TREES...POWER LINES... AND

						POLES DOWN. POSSIBLE TORNADO. (MRX)
8:00	--	CAGLE	SEQUATCHIE	35.47	-85.46	POWER LINES AND TREES DOWN NEAR INTERSECTION OF HIGHWAY 399 AND HIGHWAY 111. (MRX)
8:34	--	1 SE POWELLS CROSSROADS	MARION	35.17	-85.47	TREE DOWN ON HIGHWAY 27 WITH ONE LANE BLOCKED. (MRX)
8:43	--	DECATUR	MEIGS	35.53	-84.79	SCATTERED TREES DOWN THROUGHOUT THE COUNTY. (MRX)
8:50	--	SODDY-DAISY	HAMILTON	35.26	-85.17	REPORT OF TREE ON PARKED CAR... NO INJURIES. (MRX)
8:51	--	2 SE RICEVILLE	MCMINN	35.36	-84.67	TREES DOWN AT COUNTY ROADS 725 AND 700. (MRX)
8:53	--	ATHENS	MCMINN	35.45	-84.6	TREE DOWN AND SMALL HAIL. (MRX)
9:10	--	7 SSW OAK RIDGE	ROANE	35.87	-84.34	HWY 95 BETWEEN BEAR CREEK RD. AND WEST ENTRANCE OF OAK RIDGE NATIONAL LAB. (MRX)
9:11	--	2 SE LOUDON	LOUDON	35.71	-84.33	SEVERAL TREES DOWN NEAR VONORE ROAD. (MRX)
9:15	--	4 NW NIOTA	MCMINN	35.56	-84.6	TREE BLOCKING BOTH LANES ON COUNTY ROAD 250 NEAR POND HILL CHURCH. (MRX)
9:17	--	HARRISON	HAMILTON	35.13	-85.15	SCATTERED TREES AND POWERLINES DOWN ACROSS THE COUNTY. (MRX)
9:20	--	4 NW LENOIR CITY	LOUDON	35.84	-84.32	SEVERAL TREES DOWN. HWY 321 CLOSED. (MRX)
9:26	--	FARRAGUT	KNOX	35.87	-84.18	SEVERAL TOPS OF TREES SNAPPED OFF. (MRX)
9:26	--	3 NE FARRAGUT	KNOX	35.91	-84.14	ROOF DAMAGE TO CHRISTIAN ACADEMY OF KNOX. (MRX)
9:45	--	8 WSW KNOXVILLE	KNOX	35.93	-84.08	TREE WENT THROUGH THE ROOF OF A HOME ON COVENTRY ROAD. (MRX)
9:45	63	KNOXVILLE	KNOX	35.97	-83.95	PEAK WIND GUST OF 63 MPH IN WEST KNOXVILLE. (MRX)

9:46	--	KNOXVILLE	KNOX	35.97	-83.95	DAMAGE TO ROOFS IN NEW CONSTRUCTION ON RICHMOND AVENUE. (MRX)
9:55	--	MARYVILLE	BLOUNT	35.75	-83.97	WIDESPREAD TREE DAMAGE ACROSS THE COUNTY. (MRX)
10:04	--	4 W DUCKTOWN	POLK	35.04	-84.46	A FEW TREES DOWN ON HIGHWAY 64. (MRX)
10:07	--	LUTTRELL	UNION	36.21	-83.74	TREES AND POWER LINES DOWN ON HIGHWAY 61 EAST. (MRX)
10:09	--	SEYMOUR	SEVIER	35.87	-83.77	TREES DOWN ON MARYVILLE HIGHWAY IN SEYMOUR NEAR THE BLOUNT COUNTY LINE. (MRX)
10:10	--	NEW MARKET	JEFFERSON	36.1	-83.55	TREES DOWN AT MANY LOCATIONS THROUGHOUT THE COUNTY. (MRX)
10:20	--	TELLICO PLAINS	MONROE	35.37	-84.3	MULTIPLE TREES AND POWERLINES DOWN ACROSS THE COUNTY. (MRX)
10:55	--	GREENEVILLE	GREENE	36.17	-82.82	TREES DOWN IN SOUTHERN PORTION OF THE COUNTY. (MRX)
11:14	--	5 N ROGERSVILLE	HAWKINS	36.48	-83.01	TREE DOWN AT HIGHWAY 70 N AND CLONCE ROAD. (MRX)
11:17	--	JONESBOROUGH	WASHINGTON	36.29	-82.48	TREES DOWN IN JONESBOROUGH AND EMBREEVILLE. (MRX)
11:24	--	4 SW KINGSPORT	SULLIVAN	36.49	-82.61	A TREE DOWN NEAR BAYS MOUNTAIN/EASTMAN REC PARK. (MRX)

### CPC outlooks for the next month:

Looking ahead to December, the cool pattern looks to continue for the first half of the month, with a switch to a warm pattern for the second half of the month. The patterns also suggest wetter than normal conditions for the state, with higher confidence in the southern and western portions of the state (generally along and west of a line from Chattanooga to Clarksville). ENSO is currently in a neutral phase, but El Niño conditions are forecast to develop this winter.

