

East Tennessee State University

Digital Commons @ East Tennessee State University

Center for Applied Research and Evaluation (CARE) in Women's Health Resources

5-5-2020

Contraceptive Care in South Carolina at Publicly Funded Family Planning Clinics

Center for Applied Research and Evaluation in Women's Health, East Tennessee State University

Follow this and additional works at: <https://dc.etsu.edu/care-womens-health-resources>



Part of the [Women's Health Commons](#)

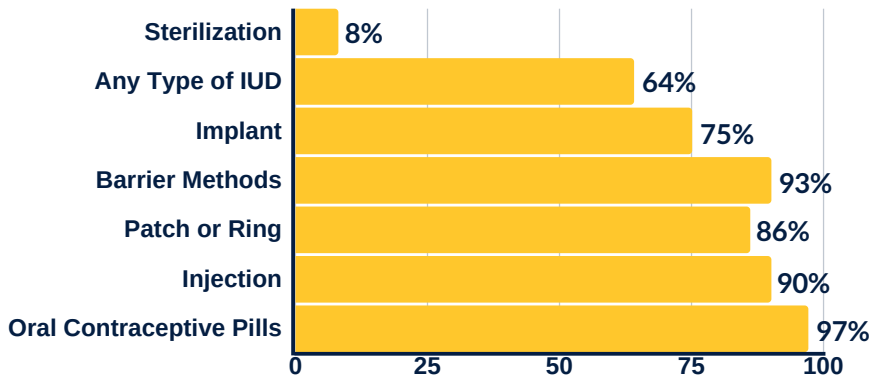
Recommended Citation

Center for Applied Research and Evaluation in Women's Health, East Tennessee State University, "Contraceptive Care in South Carolina at Publicly Funded Family Planning Clinics" (2020). *Center for Applied Research and Evaluation (CARE) in Women's Health Resources*. 2. <https://dc.etsu.edu/care-womens-health-resources/2>

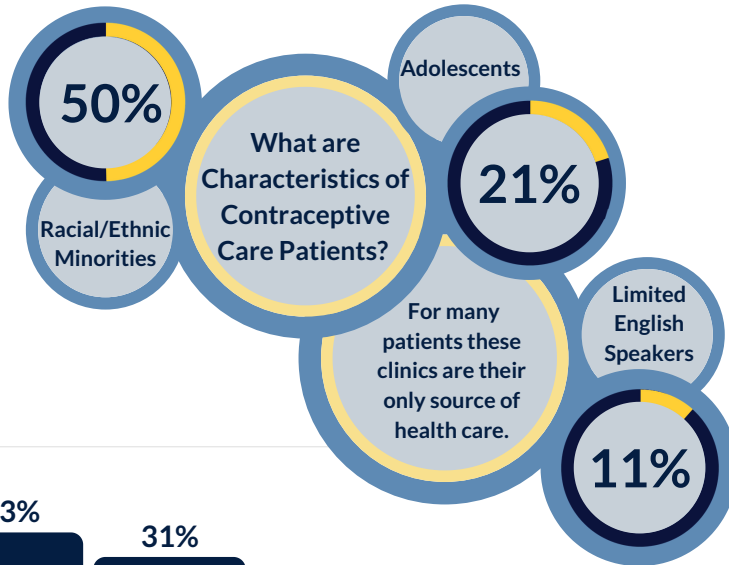
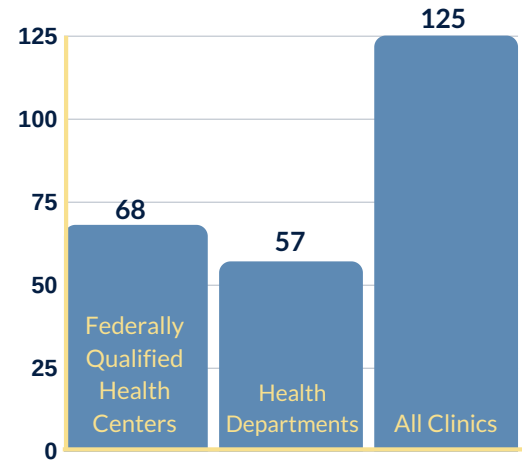
This Report is brought to you for free and open access by Digital Commons @ East Tennessee State University. It has been accepted for inclusion in Center for Applied Research and Evaluation (CARE) in Women's Health Resources by an authorized administrator of Digital Commons @ East Tennessee State University. For more information, please contact digilib@etsu.edu.

Contraceptive Care in South Carolina: at Publicly Funded Family Planning Clinics

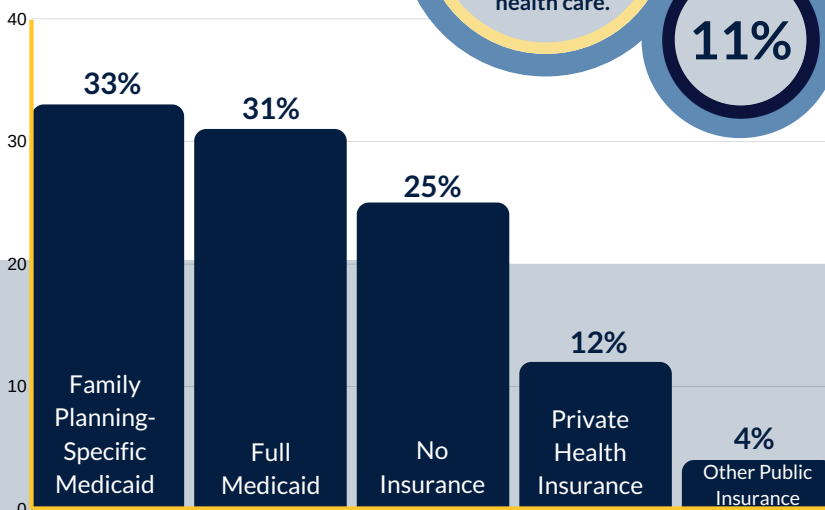
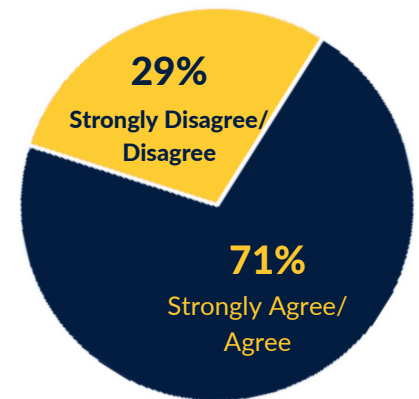
Contraceptive Methods Provided On-Site



Types of Clinics Surveyed



Do Clinics Have Staffing Capacity to Meet the Contraceptive Care Needs in Their Communities?



What Types of Insurance Coverage do Contraceptive Care Patients Have?

Thank you to those clinics who participated in the 2017 health center survey!

Kate Beatty, PhD, MPH
Assistant Professor
beattyk@etsu.edu
(423) 439-4482



EAST TENNESSEE STATE UNIVERSITY
www.etsu.edu/cph/care-womens-health

Liane Ventura, MPH
Research Project Manager
ventural@etsu.edu
(423) 439-4734